



# Beats Studio First Generation Headband Replacement

Replace the headband when it wears out, breaks, or you just get tired of the one you have.

Written By: Anand Mangal



## INTRODUCTION

The headband is the plastic housing for the headphones' retracting mechanism and the audio wire between the two speakers. You will be removing the headband from each of the two speakers.

### TOOLS:

- [T5 Torx Screwdriver](#) (1)
- [iFixit Opening Tools](#) (1)
- [Tweezers](#) (1)

### PARTS:

- [Beats by Dre. Studio Head Band Frame](#) (1)
- [Beats by Dre. Studio Headphone Band Cushion](#) (1)
- [Beats by Dre. Studio Headphones Headband Cover](#) (1)
- [Beats by Dre. Studio Hinge Covers](#) (1)

## Step 1 — Removing the outer headband screws.



- Using the T5 Torx screwdriver, remove the black screws on both sides of the outside of the headband.
- 4 (2 per side) Torx type T5, 3.5mm long screws.

## Step 2 — Removing the plastic hinge guards.



- Use the plastic opening tool to **gently** pry the black plastic hinge piece directly away from the headband as shown.

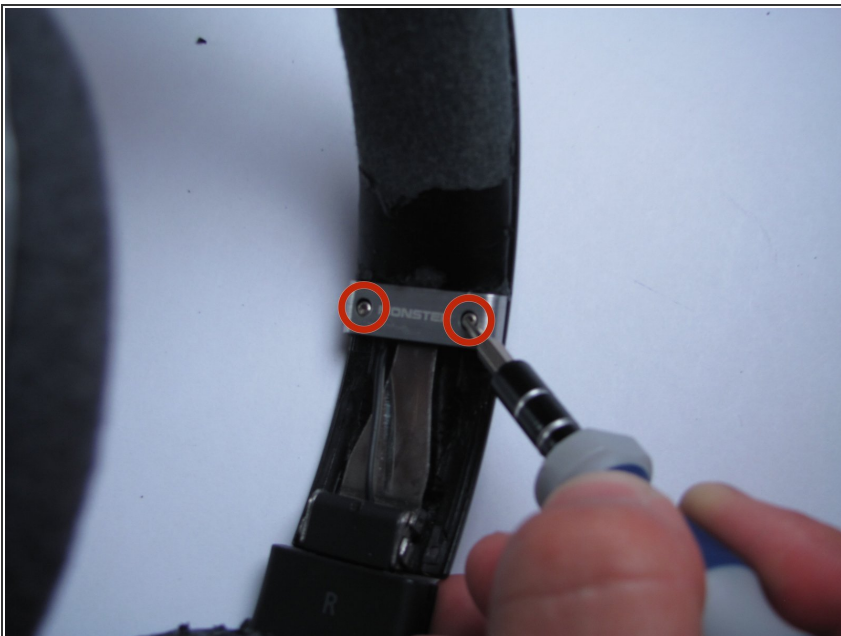
### Step 3 — Removing the hinge pins.



- Remove the small metal hinges from their housings. There are a total of 4 hinges, two per side of the headphones.

⚠ The hinge pins may slide out upon removal of the black hinge piece from the previous step. Be careful not to lose the hinge pins.

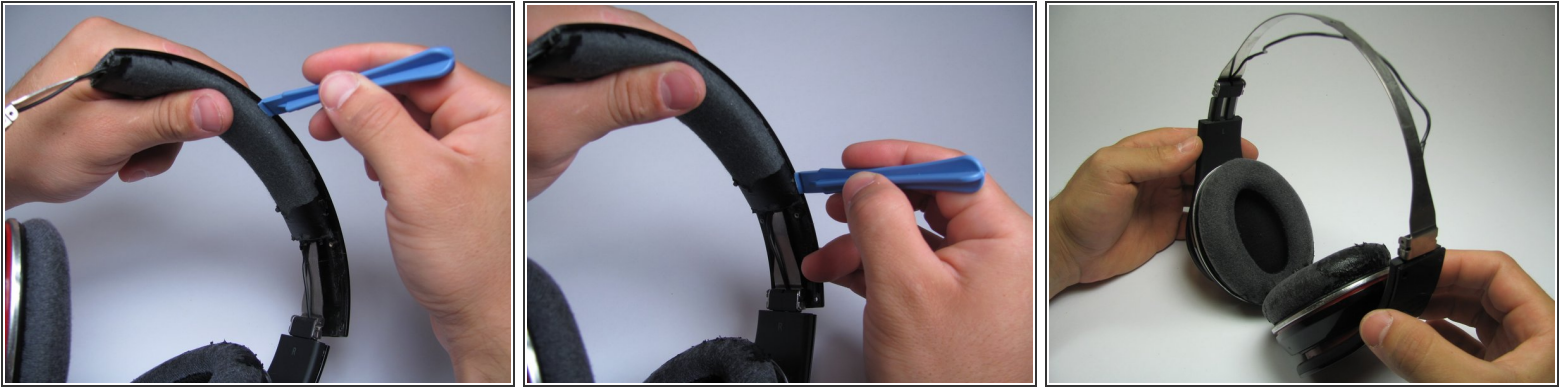
### Step 4 — Removing the metal bands.



- Using a T5 Torx screwdriver, remove the silver screws from the silver segment of the headband.
- 4 (2 per side) Torx type T5, 4.0mm long screws.




## Step 5 — Removing the headband cushion.



- Using the plastic opening tool, **gently** pry the headband cushion directly away from the plastic portion of the headband as shown. Pry the plastic portion a small amount and then move the opening tool sideways along on the headband. Repeat on both sides until the cushion separates from the top plastic part of the headband.

## Step 6 — Removing the metal headband support.



- Carefully remove the metal band from each of the hinge housings on each side. These should come off quite easily, provided that you have removed the hinges as instructed in step 3.
  - Congratulations, you have completely removed the headband! This will allow for ease of accessibility to the speakers should you choose to delve further into the depths of your headphones.
-  The black wire connecting the two speakers is somewhat fragile! Check that it isn't frayed. If it is frayed, consider repairing it with some electrical tape, splicing it, or replacing it.

To reassemble your device, follow these instructions in reverse order.