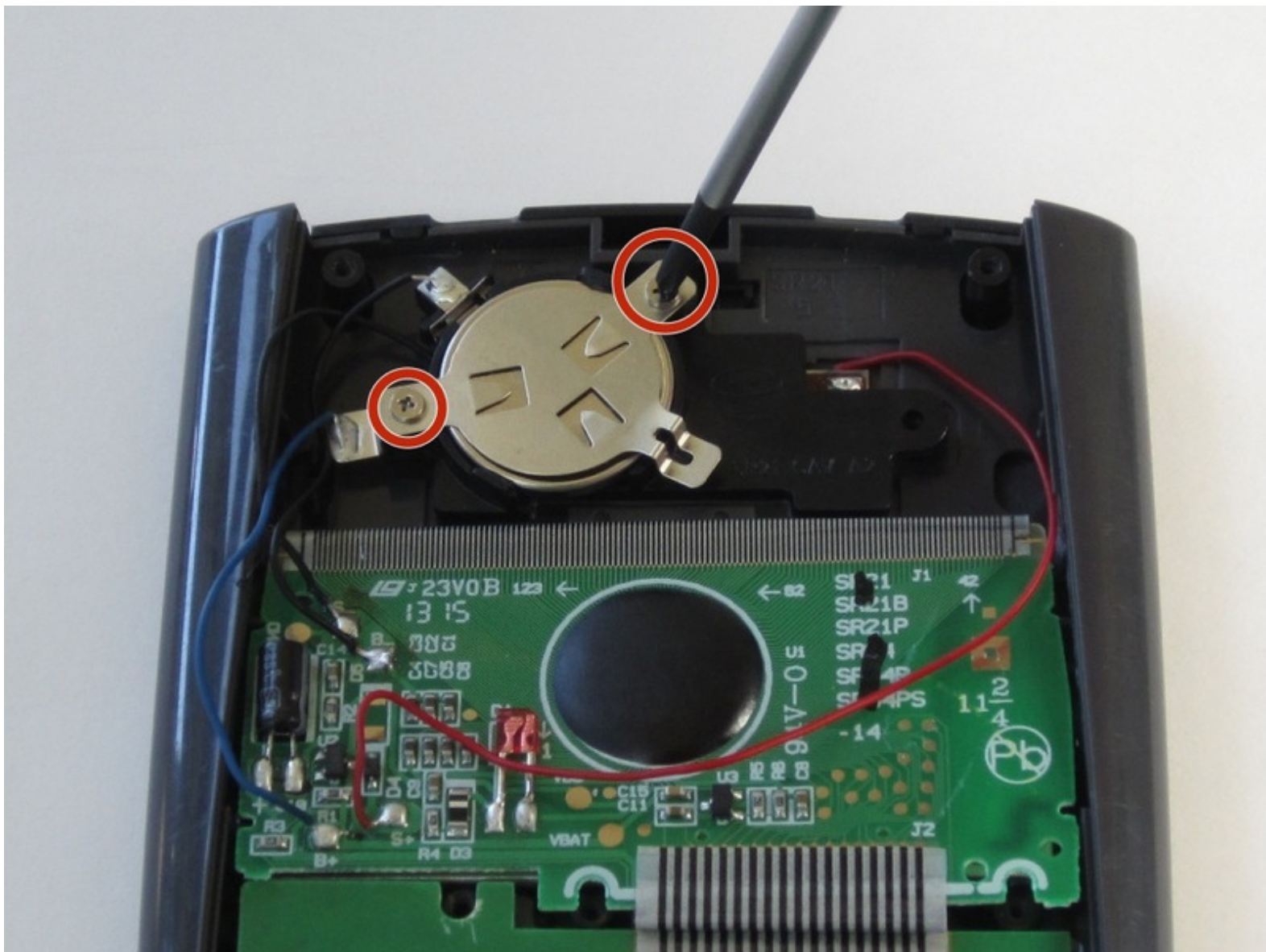




# TI-36X Pro Battery Replacement

This guide will show how to replace the battery in a TI-36X Pro.

Written By: Robert Sekerak



## INTRODUCTION

For this guide you will remove the back cover and battery cover in order to replace the battery.

---



### TOOLS:

- [Phillips #00 Screwdriver](#) (1)
- [Phillips #1 Screwdriver](#) (1)



### PARTS:

- [3 volt CR2032](#) (1)
-

## Step 1 — Back Cover



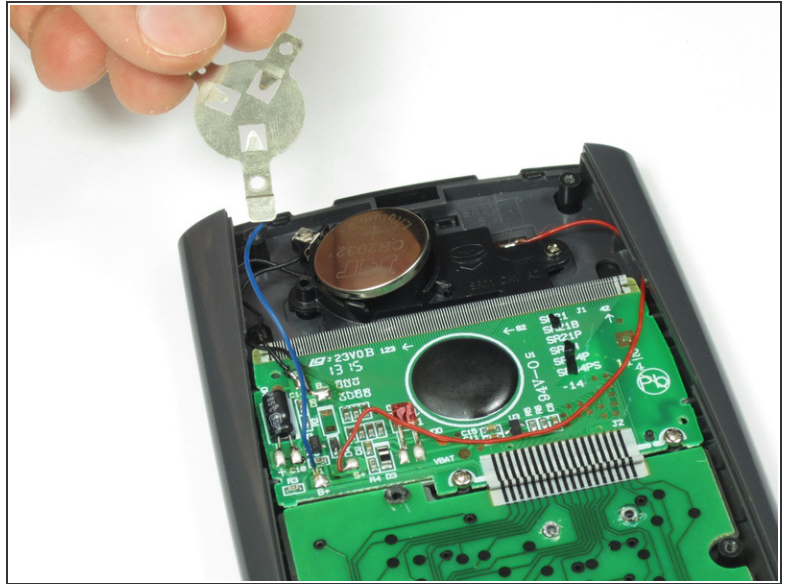
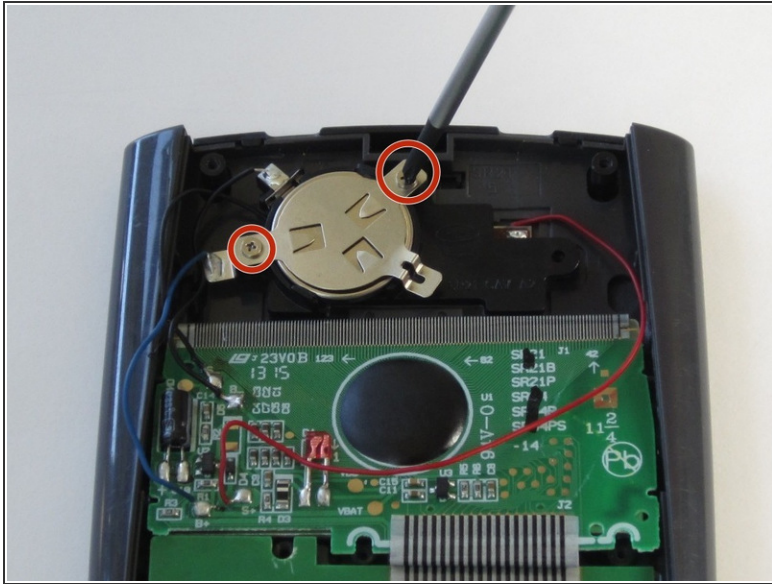
- Remove the calculator's protective cover.
- Place the calculator face down.

## Step 2



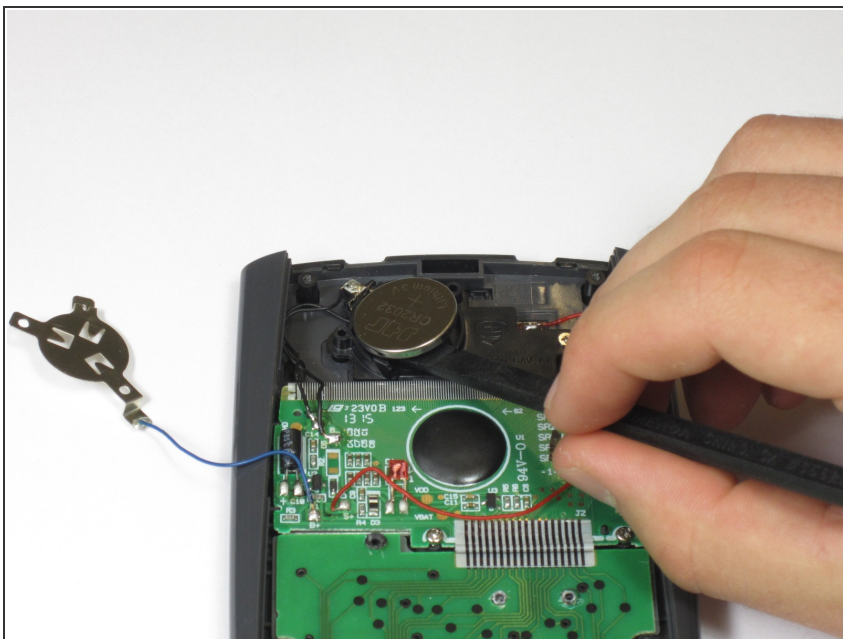
- Using a Phillips #1 screwdriver, remove the six 6mm screws from the back of the case and place them to the side.
- Start from the notches on the top edge and use your fingers or a prying tool to carefully pry the back cover from the calculator.

## Step 3 — Battery



- Use a Phillips #00 screwdriver to remove the two 7.5 mm screws holding the battery cover to the case.
- ⚠ Remove the battery cover without disconnecting either end of the blue wire.
- Use your finger to move the battery cover to the side.

## Step 4



- Use the flat side of a spudger to remove the battery by lifting the bottom edge.
- ★ When inserting a new battery, check the polarity (+ or -) and insert the new battery with the + side on top.

To reassemble your device, follow these instructions in reverse order.

This document was last generated on 2018-02-09 01:52:46 AM.