



Disassembling Olympus Stylus 725 SW Back Panel

Written By: Bobby Hodges



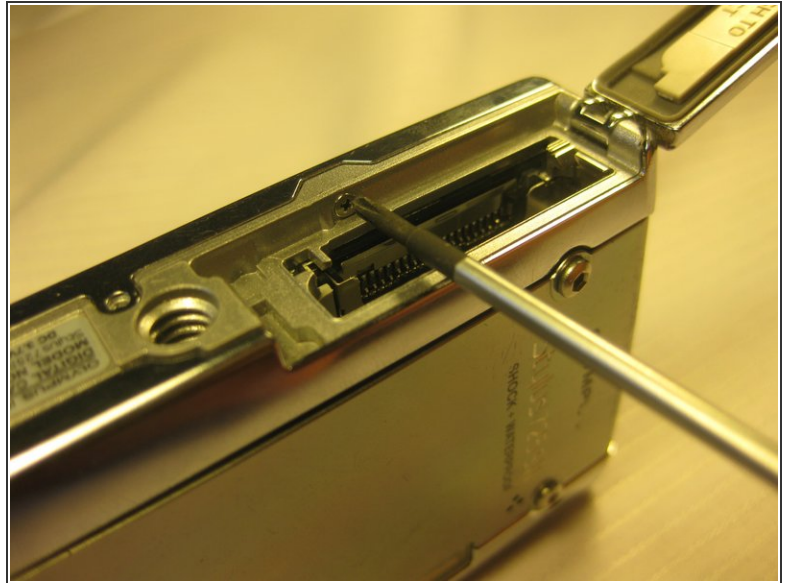
INTRODUCTION

Use this guide to remove the back panel to access the components inside.

TOOLS:

- [Phillips #00 Screwdriver](#) (1)
-

Step 1 — Disassembling Olympus Stylus 725 SW Battery



i The battery is located on the bottom of the camera.

- Remove the battery by placing your thumb on the bottom flap and sliding the release button away from the side the lens is on. (The screwdriver is simply used as a reference point, no screws need to be removed)
- Charge the battery for 60-90 minutes if your battery is dead.

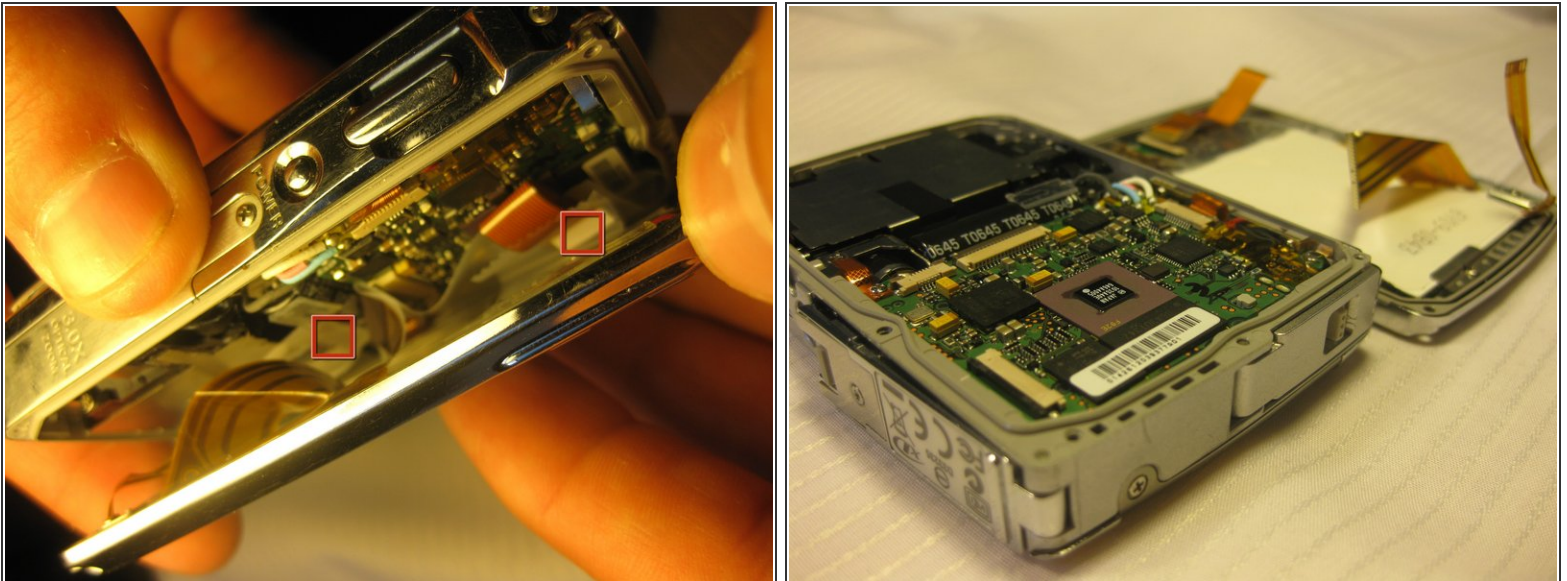
! When installing a charged battery, align the battery appropriately, with the positive signs and negative signs lining up.

Step 2 — Back Panel



- Unscrew the 3mm long cover screws at the corners of the camera using a #00 Philips Screwdriver.
- Unscrew the 2mm long screws securing the sides of the camera which holds the back panel. Use the same screwdriver.

Step 3



⚠ Be careful when removing the back cover, you will need to detach the connecting ribbons

- Detach the ribbons using your thumb, sliding them out of their slots.

To reassemble your device, follow these instructions in reverse order.