



Disassembling Olympus Stylus 725 SW Battery

Written By: Bobby Hodges



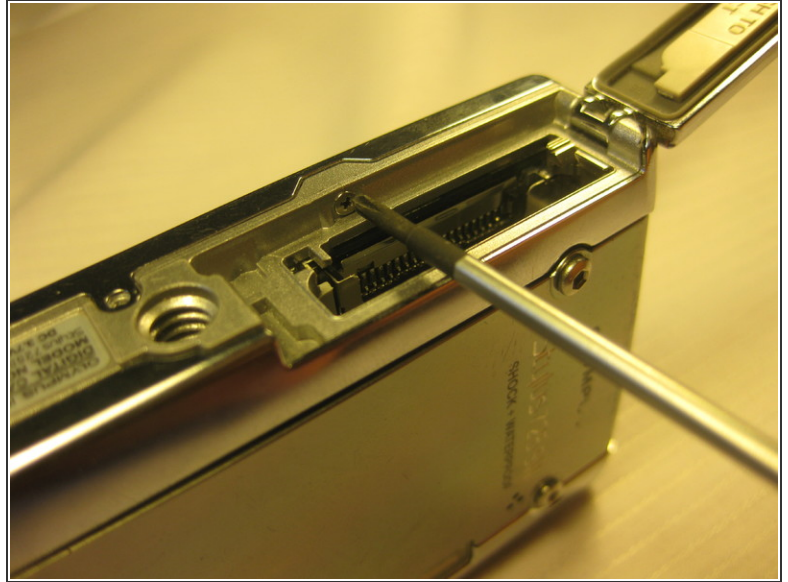
INTRODUCTION

Use this guide to remove the battery in order to charge it or do extensive work on the camera.

PARTS:

- [Olympus Stylus 725 SW Battery](#) (1)
-

Step 1 — Disassembling Olympus Stylus 725 SW Battery



i The battery is located on the bottom of the camera.

- Remove the battery by placing your thumb on the bottom flap and sliding the release button away from the side the lens is on. (The screwdriver is simply used as a reference point, no screws need to be removed)
- Charge the battery for 60-90 minutes if your battery is dead.

! When installing a charged battery, align the battery appropriately, with the positive signs and negative signs lining up.

To reassemble your device, follow these instructions in reverse order.

This document was last generated on 2018-02-22 02:01:42 AM.