



Disassembling Olympus Stylus 725 SW Side Panels

Written By: Bobby Hodges



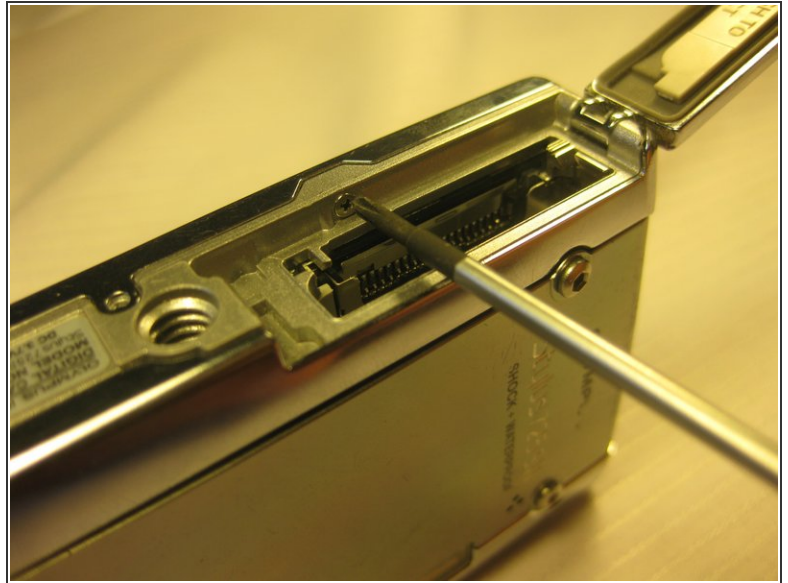
INTRODUCTION

Use this guide to remove the side panels to access parts inside.

TOOLS:

- [Phillips #00 Screwdriver](#) (1)
 - [Spudger](#) (1)
-

Step 1 — Disassembling Olympus Stylus 725 SW Battery



i The battery is located on the bottom of the camera.

- Remove the battery by placing your thumb on the bottom flap and sliding the release button away from the side the lens is on. (The screwdriver is simply used as a reference point, no screws need to be removed)
- Charge the battery for 60-90 minutes if your battery is dead.

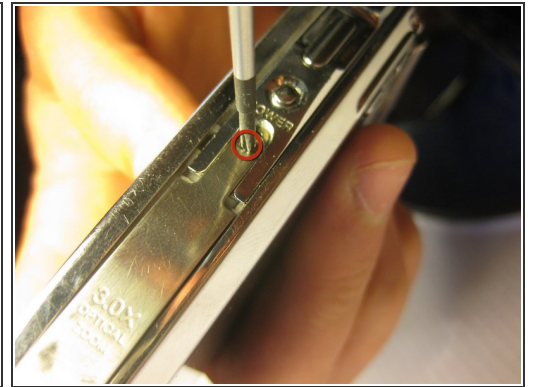
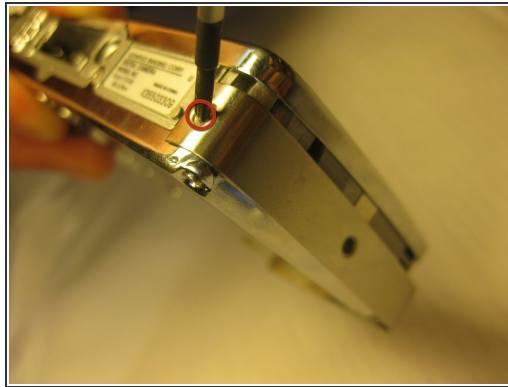
! When installing a charged battery, align the battery appropriately, with the positive signs and negative signs lining up.

Step 2 — Front Panel



- Remove the top screws using a 1.5 mm screwdriver.
- Remove the single side screw located on the side of the camera where the tab is, using a #00 screwdriver.

Step 3 — Side Panels



- Using a #00 Philips Head Screwdriver, remove the screws located on all four sides of the camera.

Step 4



- After removing all four of the screws, pry the side covers off of the camera.

To reassemble your device, follow these instructions in reverse order.

This document was last generated on 2019-08-08 10:22:09 AM.