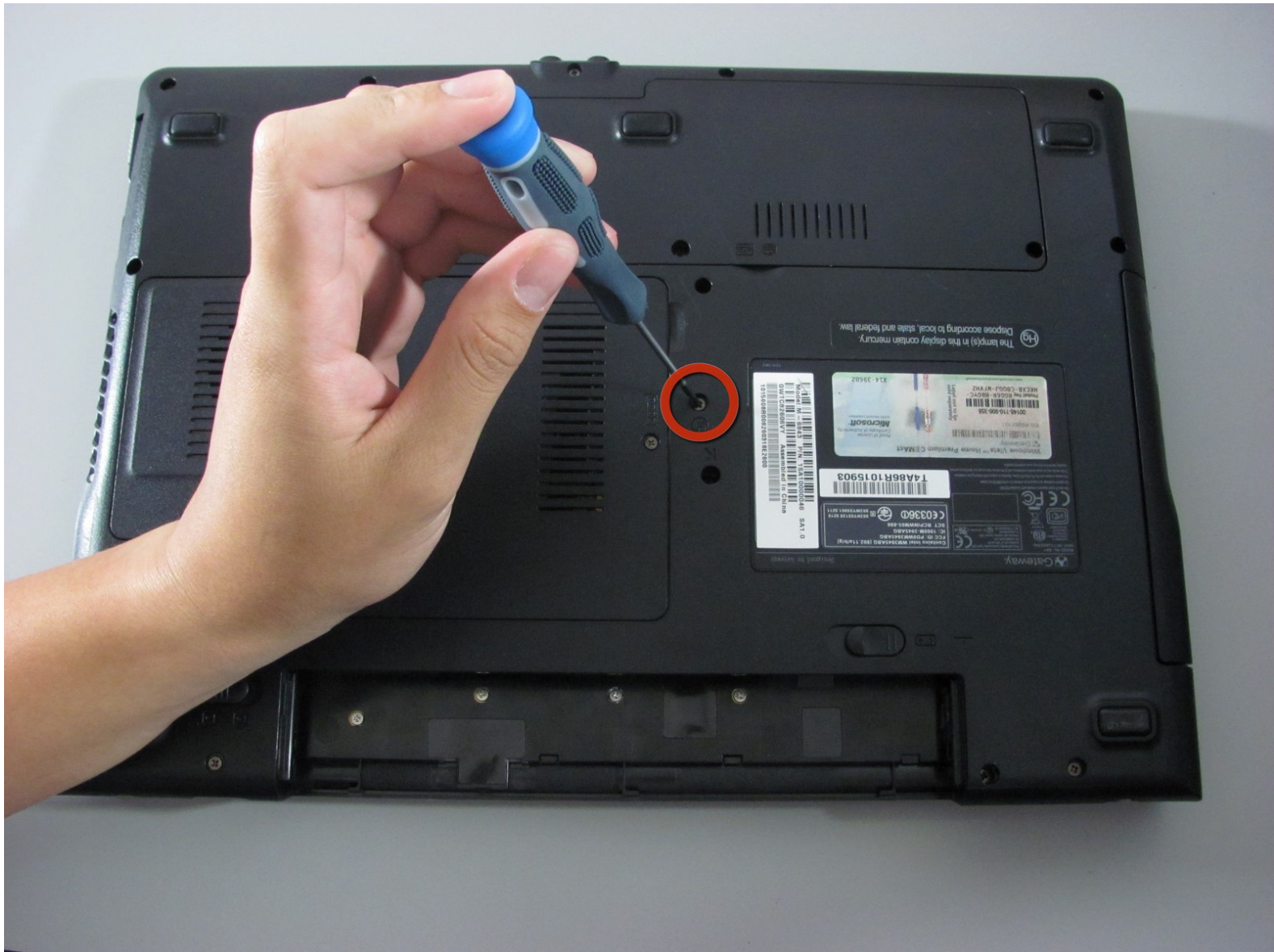




Gateway SA1 Disk Drive Replacement

Written By: Diego Carteno



INTRODUCTION

This Guide will help you replace a Gateway Disk Drive.



TOOLS:

- [Phillips #00 Screwdriver](#) (1)
- [Spudger](#) (1)



PARTS:

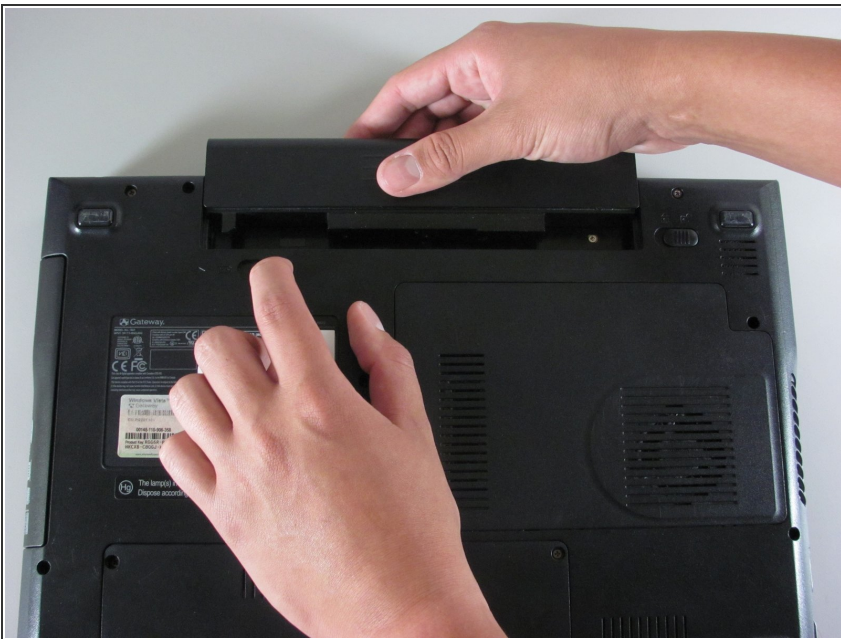
- [Gateway SA1 Disk Drive](#) (1)
-

Step 1 — Battery



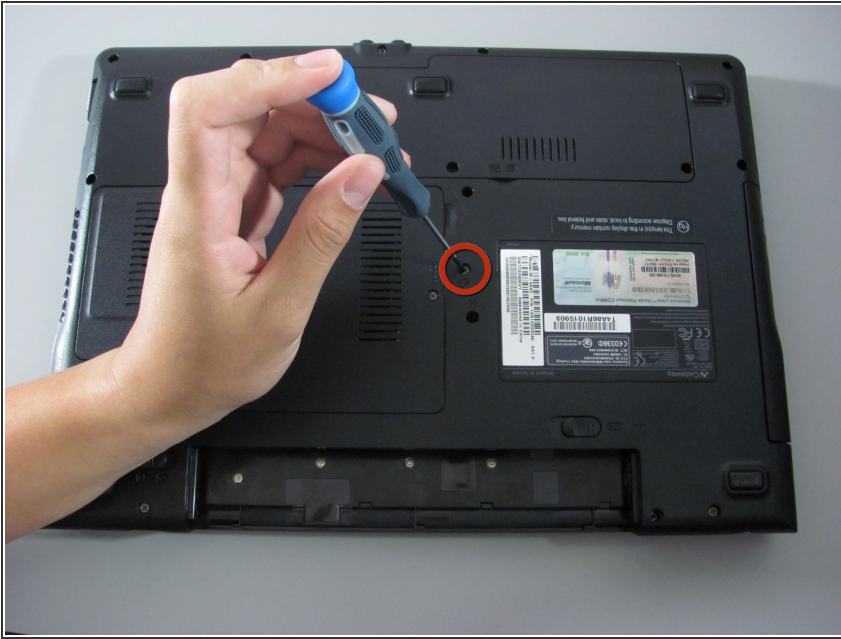
- Move the latch to the right of the battery to unlock.

Step 2



- Slide the latch on the left directly below the battery to unlock and pull out the battery as shown.
- ⓘ The latch must be held in position to remove the battery.

Step 3 — Disk Drive



- Unscrew the marked 5.9 mm Philips screw.

Step 4



- Use the spudger to pry out the Disk drive.

Step 5



- The disk drive should easily detach and can now be replaced.

To reassemble your device, follow these instructions in reverse order.