



Toshiba Satellite M45 Display Replacement

How to replace the display on a Toshiba Satellite M45 laptop.

Written By: Aryn Pauly



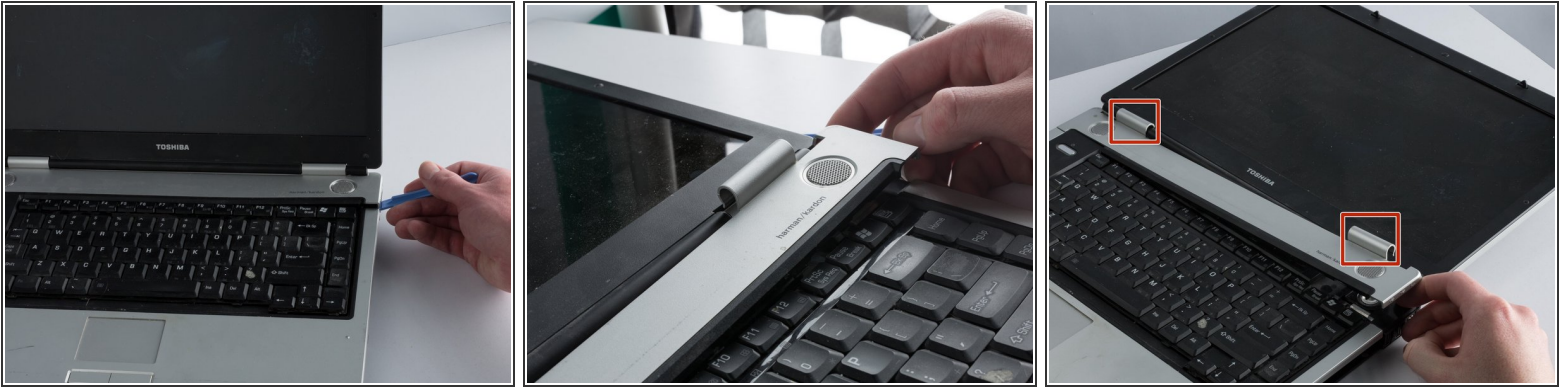
INTRODUCTION

This guide will demonstrate how to dismantle and replace components of your computers display (screen).

TOOLS:

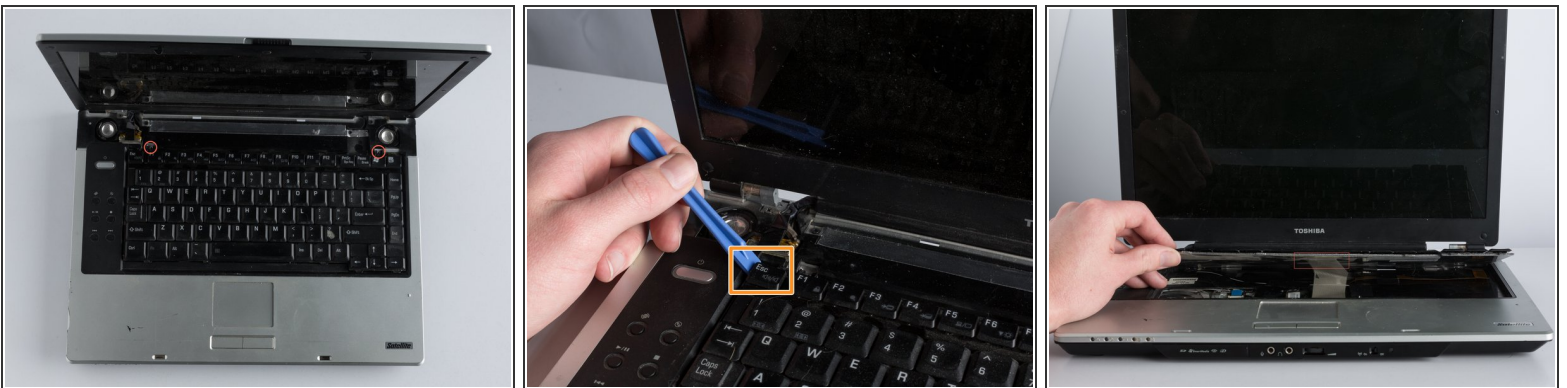
- [Phillips #1 Screwdriver](#) (1)
 - [Phillips #00 Screwdriver](#) (1)
 - [iFixit Opening Tools](#) (1)
-


Step 1 — Keyboard



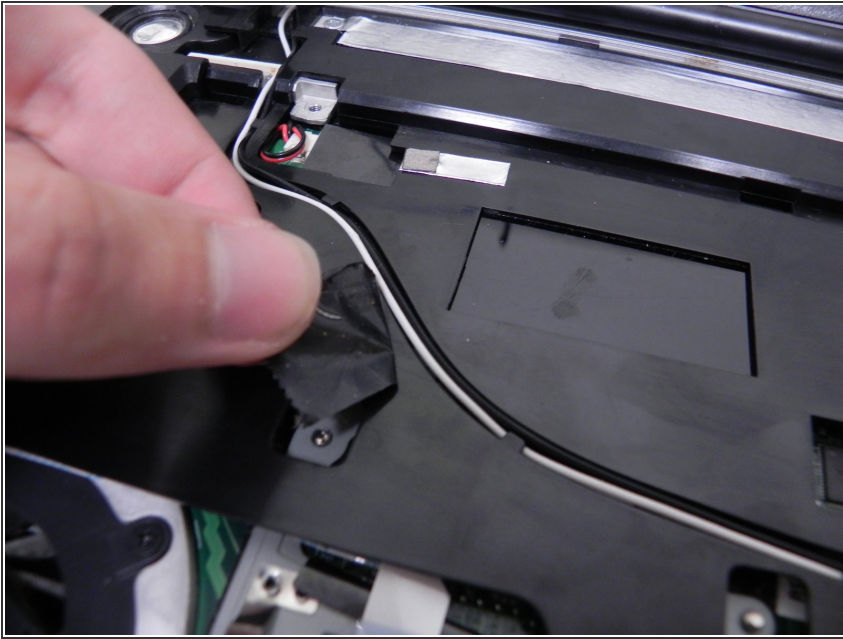
- Carefully pry the panel above the keyboard from both sides of the laptop using the iFixit opening tool.
- Push back the screen until it is horizontal with the laptop.
- Gently remove the clips that connect the panel to the screen.

Step 2



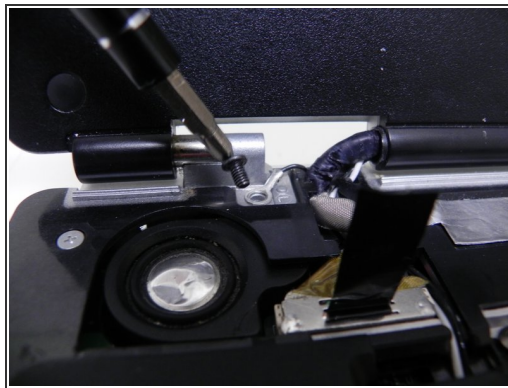
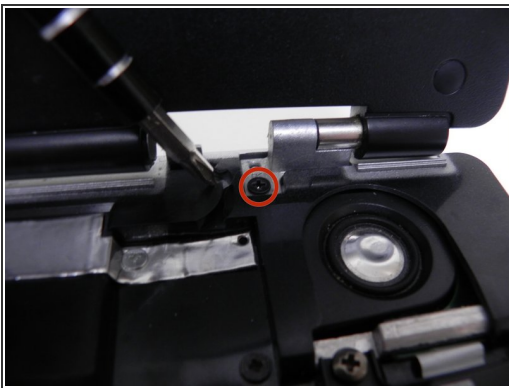
- Remove the two screws using a Phillips #1 screwdriver.
 - Gently pry the keyboard from the laptop using the iFixit opening tool.
 - Slowly lift the keyboard away from the laptop until you are able to remove the ribbon that connects to the laptop.
-  Ensure you remove the keyboard slowly to avoid damaging the ribbon cable.

Step 3 — Display



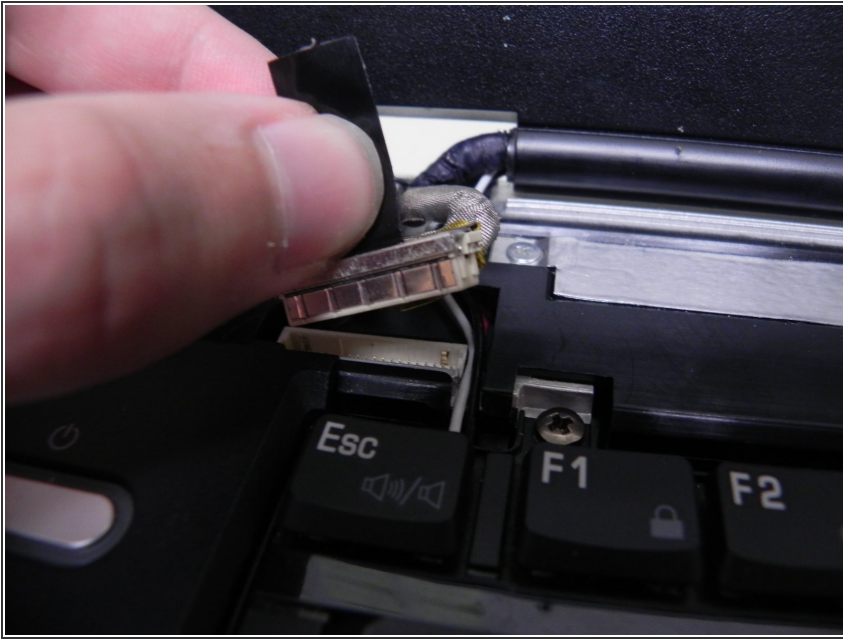
- Remove the 2-3 pieces of black electrical tape covering the black-and-white antenna cable.
- Close the display, flip the laptop over, and disconnect the black-and-white antenna cables from the Wi-Fi card.
- Flip the laptop back over and open the display.

Step 4



- Remove the two Phillips #1 screws securing the display hinges.
- ⓘ It is recommended to keep the screws in a small cup so that you don't lose them.
- Remove the four Phillips #1 screws on the back of the laptop.

Step 5



- Gently pull up on the display's video connector to remove it.
- Remove the black-and-white antenna cable from the groove.
- Your display can now be removed.

To reassemble your device, follow these instructions in reverse order.