



Toshiba Satellite M45 Keyboard Replacement

How to replace a Toshiba Satellite M45 keyboard.

Written By: Aryn Pauly



INTRODUCTION

This guide will show you how to replace your keyboard.

TOOLS:

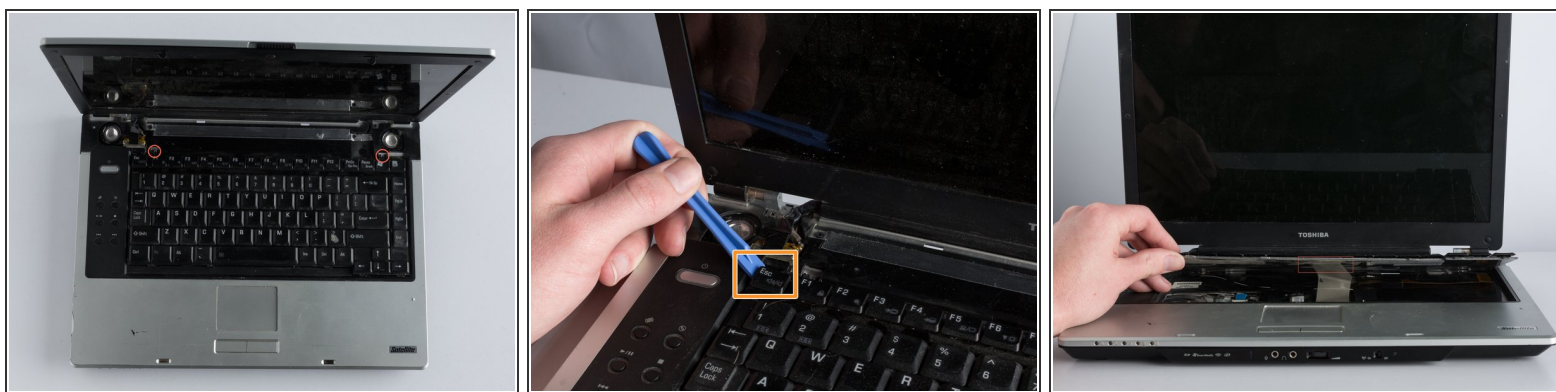
- [Phillips #1 Screwdriver](#) (1)
 - [iFixit Opening Tools](#) (1)
-

Step 1 — Keyboard



- Carefully pry the panel above the keyboard from both sides of the laptop using the iFixit opening tool.
- Push back the screen until it is horizontal with the laptop.
- Gently remove the clips that connect the panel to the screen.

Step 2



- Remove the two screws using a Phillips #1 screwdriver.
 - Gently pry the keyboard from the laptop using the iFixit opening tool.
 - Slowly lift the keyboard away from the laptop until you are able to remove the ribbon that connects to the laptop.
- ⚠ Ensure you remove the keyboard slowly to avoid damaging the ribbon cable.

To reassemble your device, follow these instructions in reverse order.