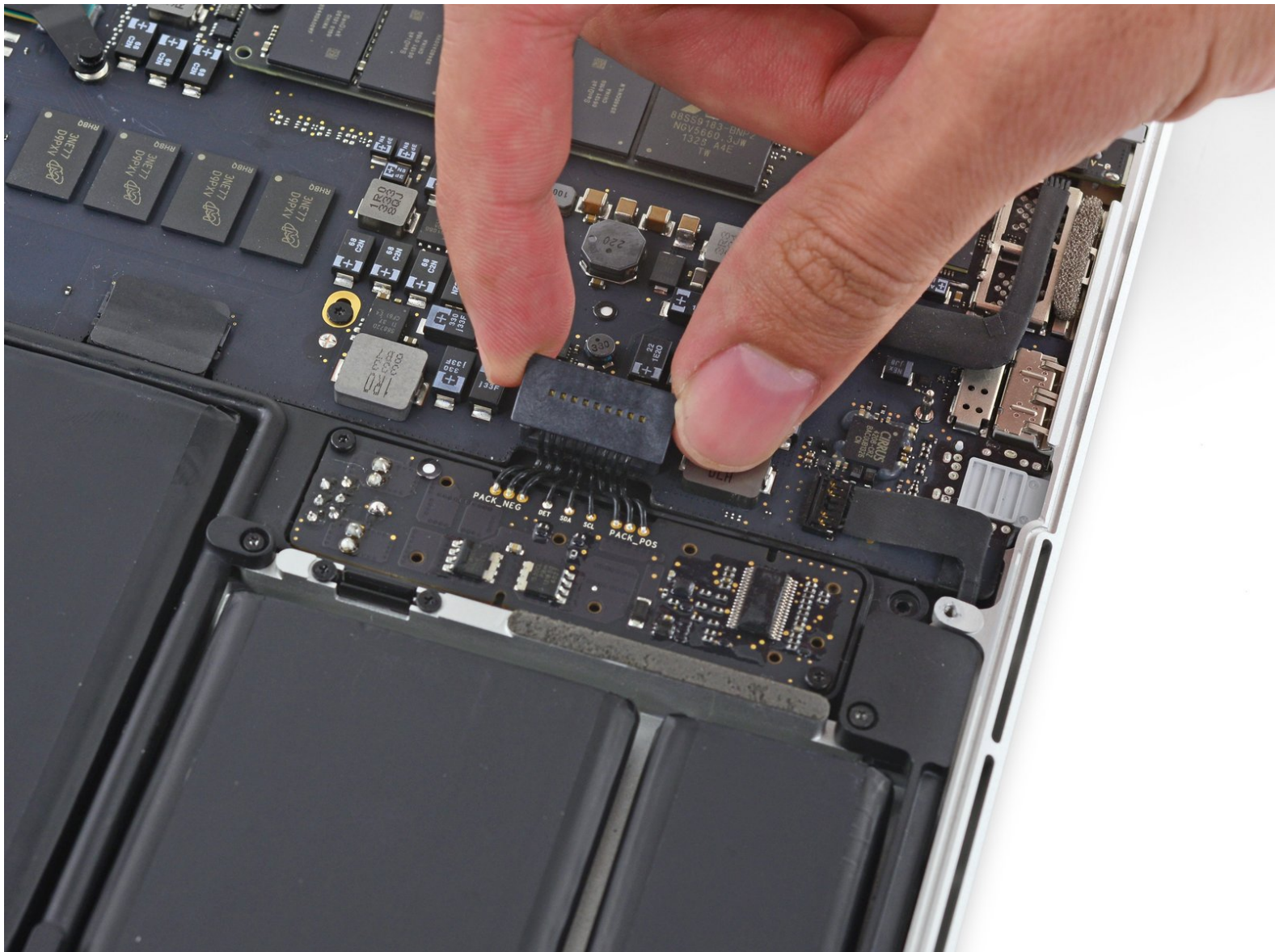




# MacBook Pro 13" Retina Display Late 2013 Battery Connector Replacement

Prereq only

Written By: Sam Goldheart



---

## INTRODUCTION

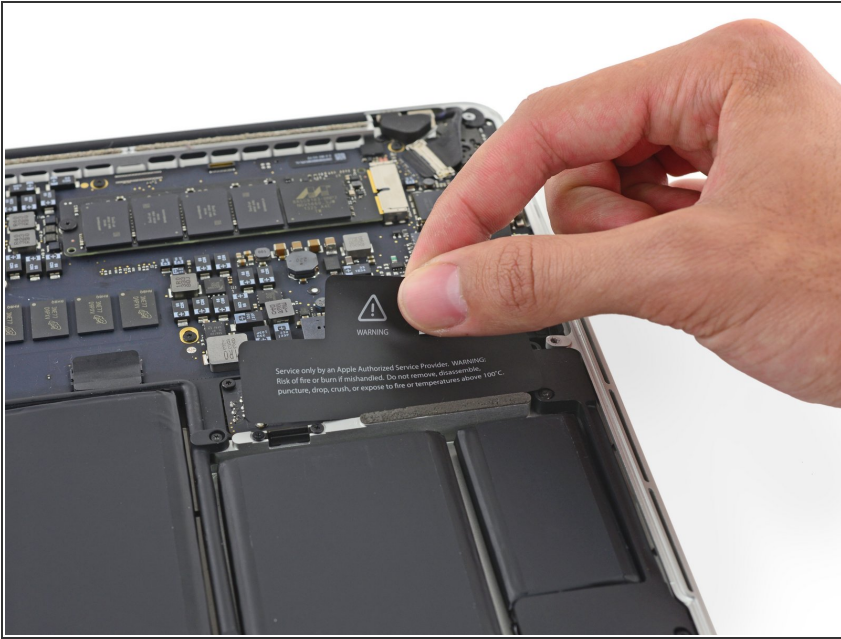
Prereq to disconnect the battery

---

### TOOLS:

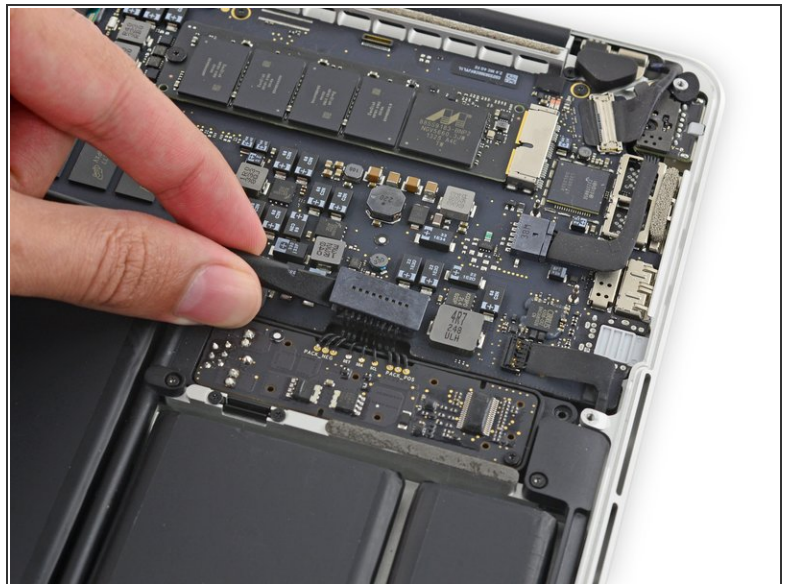
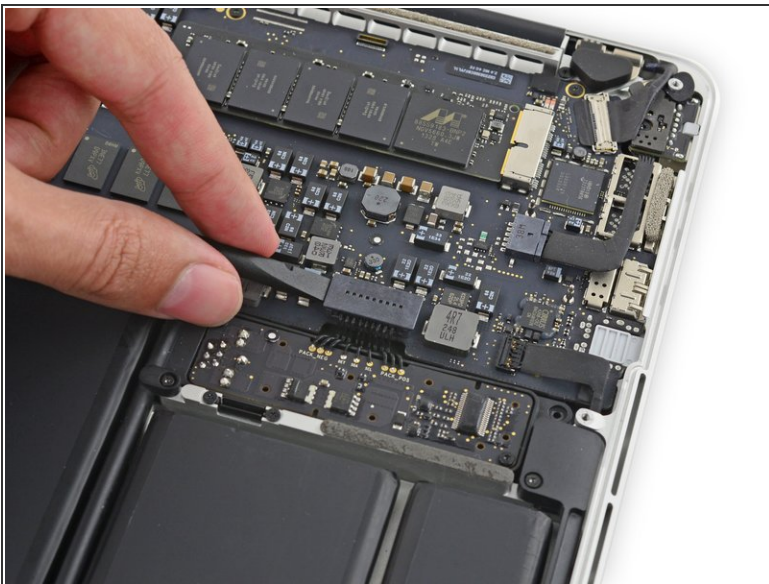
- [Spudger](#) (1)
-

## Step 1 — Battery Connector



- ⓘ If necessary, remove the plastic cover adhered to the battery contact board.

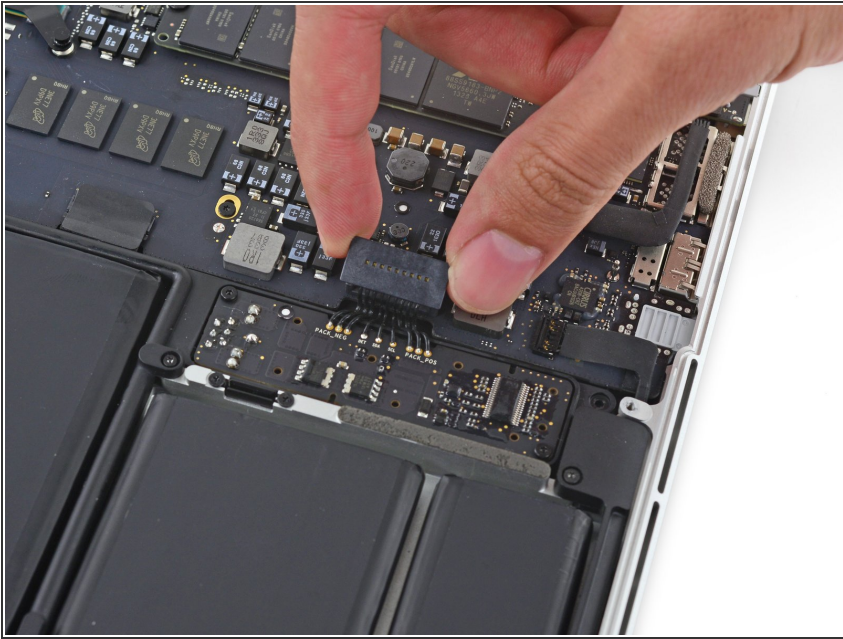
## Step 2



- Use the flat end of a spudger to lift the battery connector straight up out of its socket on the logic board.

⚠ Be sure you lift up only on the connector itself, **not** the socket, or you risk permanent damage to the logic board.

### Step 3



- ✦ Bend the battery connector up out of the way to prevent accidental contact with its socket during your repair.

To reassemble your device, follow these instructions in reverse order.