



Sony Vaio PCG-F360 Hard Drive Replacement

Written By: ahintz



INTRODUCTION

Increasing the capacity of your hard drive can improve your computer's performance.

Note: our computer did not contain a hard drive, so we just point to the hard drive bay in this guide.

TOOLS:

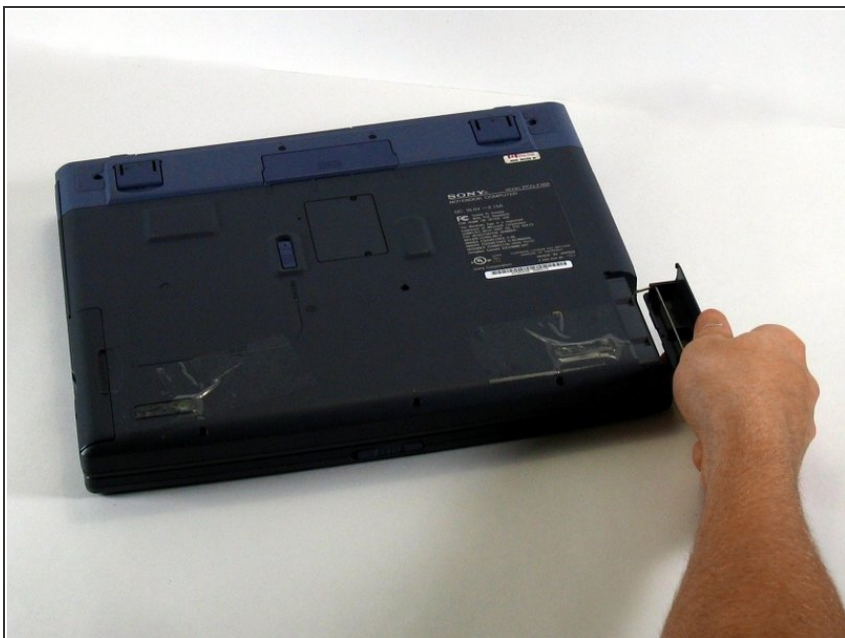
- [Phillips #00 Screwdriver](#) (1)
 - [Spudger](#) (1)
-

Step 1 — Battery



- Position the laptop screen-side down as shown.
- In this position the battery housing will be located on the right hand side.

Step 2



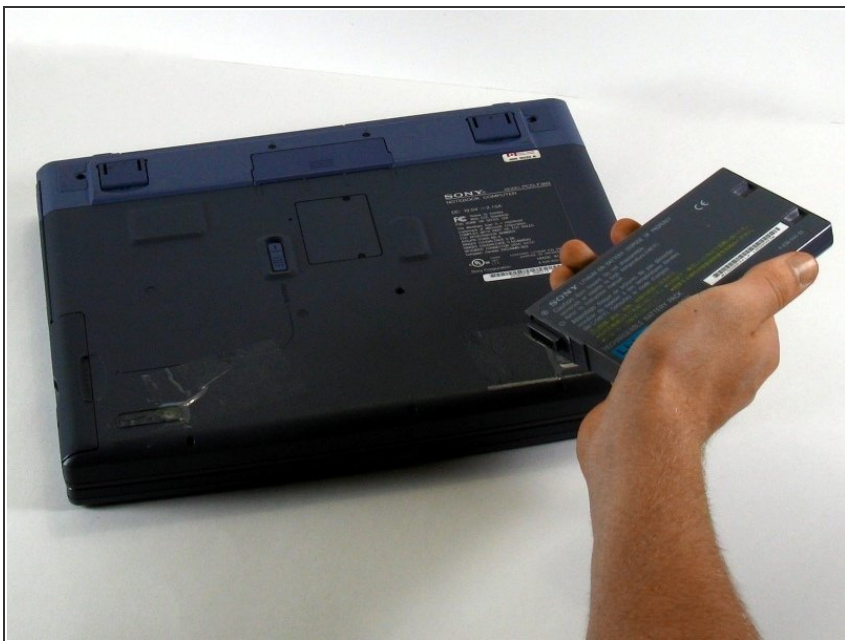
- Lift the panel up and then out to gain access to the battery.

Step 3



- Use the indentations to pull the old battery out.

Step 4



- The battery is now removed and it is safe to move on to uninstalling other components.

Step 5 — Keyboard



- There are two screws on the left hand side of the laptop near the IR (Infared remote) receiver (see image). Remove them using a Phillips #00 Screwdriver.
 - Slide the speaker panel towards the left, then carefully flip it over onto the keyboard.
- ⚠ Make sure not to pull the speaker panel away from the computer just yet - it is still connected!

Step 6



- On the inside of the speaker panel, using a spudger, push the beige tab in the direction of the ribbon. It should only move a small amount.
- Remove the ribbon by gently pulling on it, there should be little or no resistance.
- Now the speaker panel can be set aside.

Step 7



- Remove the metal screw that will be located at the red circle.
- Pull on the green strip, and the keyboard should come free easily.

Step 8 — Hard Drive



- i** We had a bit of a surprise when we opened our Sony. *The hard drive was missing!* While this is common practice when disposing of or selling a computer, it means that we're unable to show you what the hard drive looks inside the laptop.
- If a hard drive was present, it would attach to the motherboard by the shown connector.

To reassemble your device, follow these instructions in reverse order.