



# Sony Vaio PCG-F360 Floppy Drive Replacement

Written By: ahintz



## INTRODUCTION

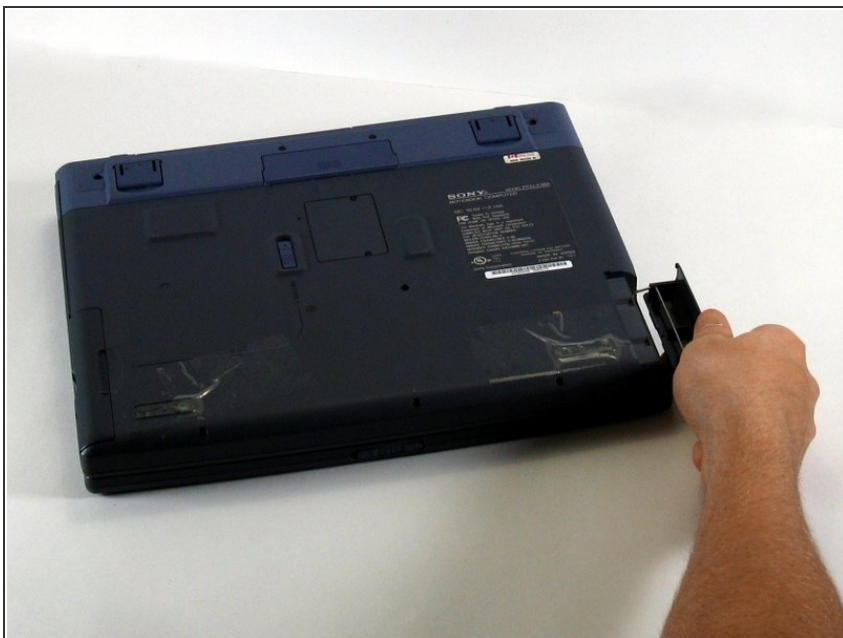
The PCG F360 comes with a floppy drive in an expansion bay. This can be replaced or swapped out for a battery or for a weight saver.

## Step 1 — Battery



- Position the laptop screen-side down as shown.
- In this position the battery housing will be located on the right hand side.

## Step 2



- Lift the panel up and then out to gain access to the battery.

### Step 3



- Use the indentations to pull the old battery out.

### Step 4



- The battery is now removed and it is safe to move on to uninstalling other components.

## Step 5 — Floppy Drive



- With one hand slide and hold the tab shown.
  - With your other hand, pull the floppy drive out of the floppy drive bay.
- To replace the floppy drive, simply slide the drive into the slot until it clicks.

To reassemble your device, follow these instructions in reverse order.

This document was last generated on 2019-07-22 06:46:43 PM.