



Samsung Galaxy S5 Motherboard Assembly Replacement

Prereq to remove the motherboard from the interior midframe

Written By: Sam Goldheart



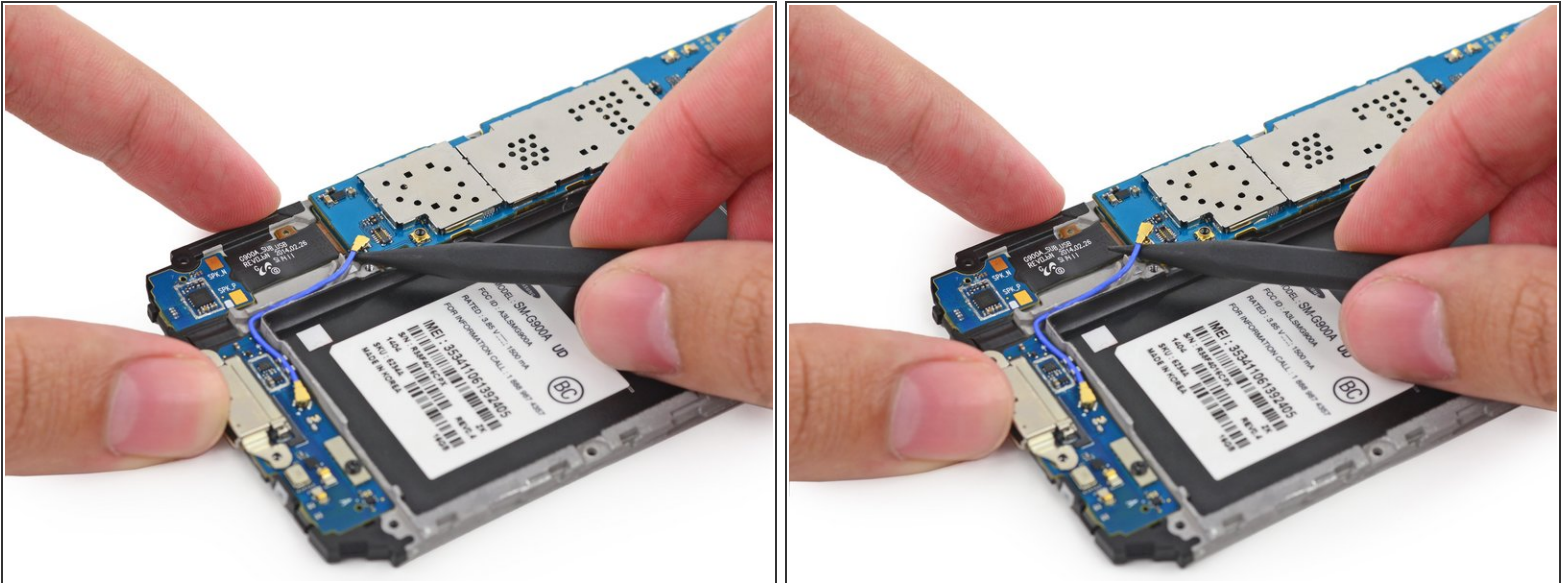
INTRODUCTION

Prereq to remove the motherboard from the interior midframe.

TOOLS:

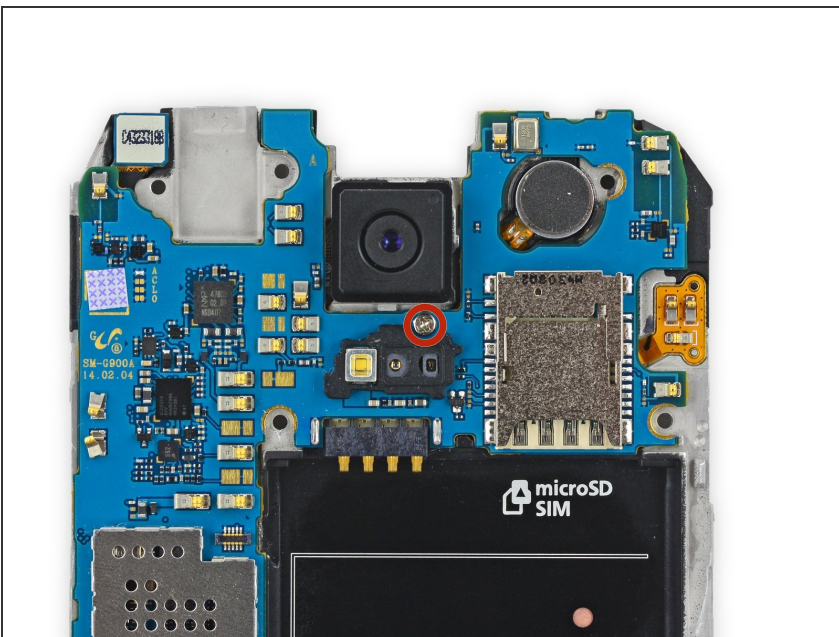
- [Spudger](#) (1)
-

Step 1 — Motherboard Assembly



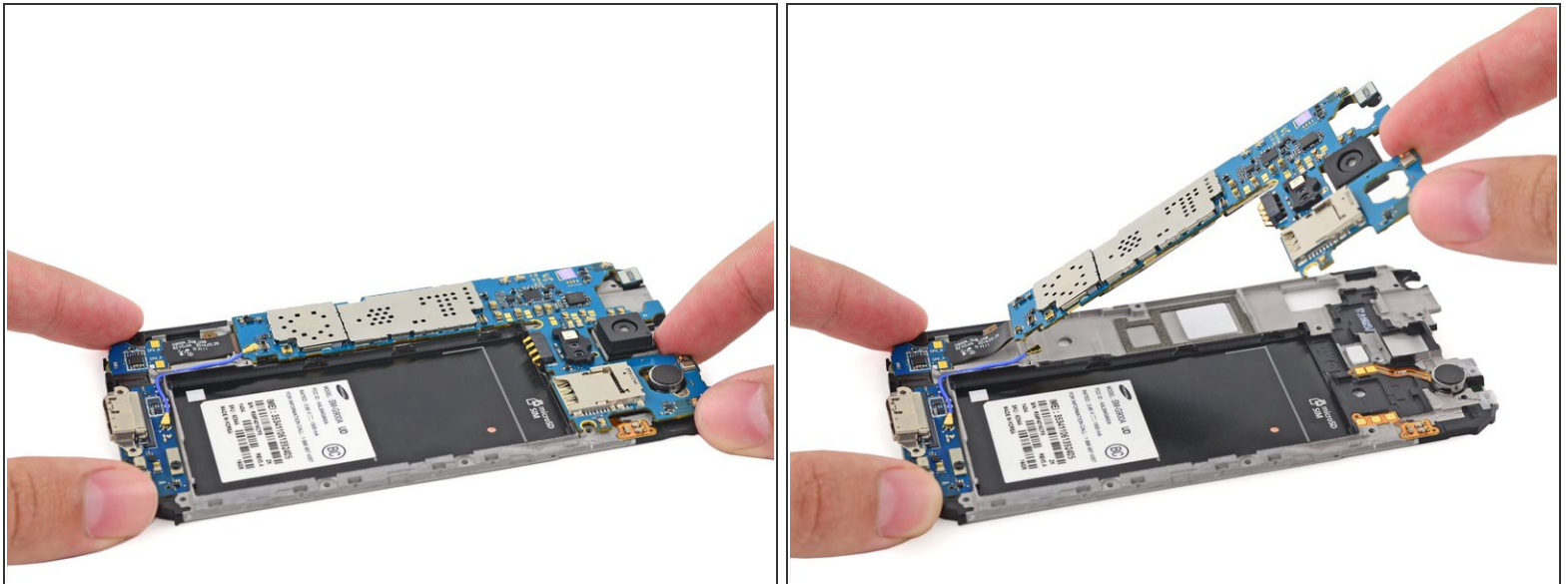
- Carefully wedge the tip of a spudger underneath the antenna cable connector.
 - Delicately lift the spudger directly upwards to disconnect the antenna connector off its socket on the motherboard.
- i** Some models have two antenna cables (blue and grey/white). Remove both of the cables.

Step 2



- Remove the single 3.0 mm Phillips #000 screw securing the motherboard to the midframe.

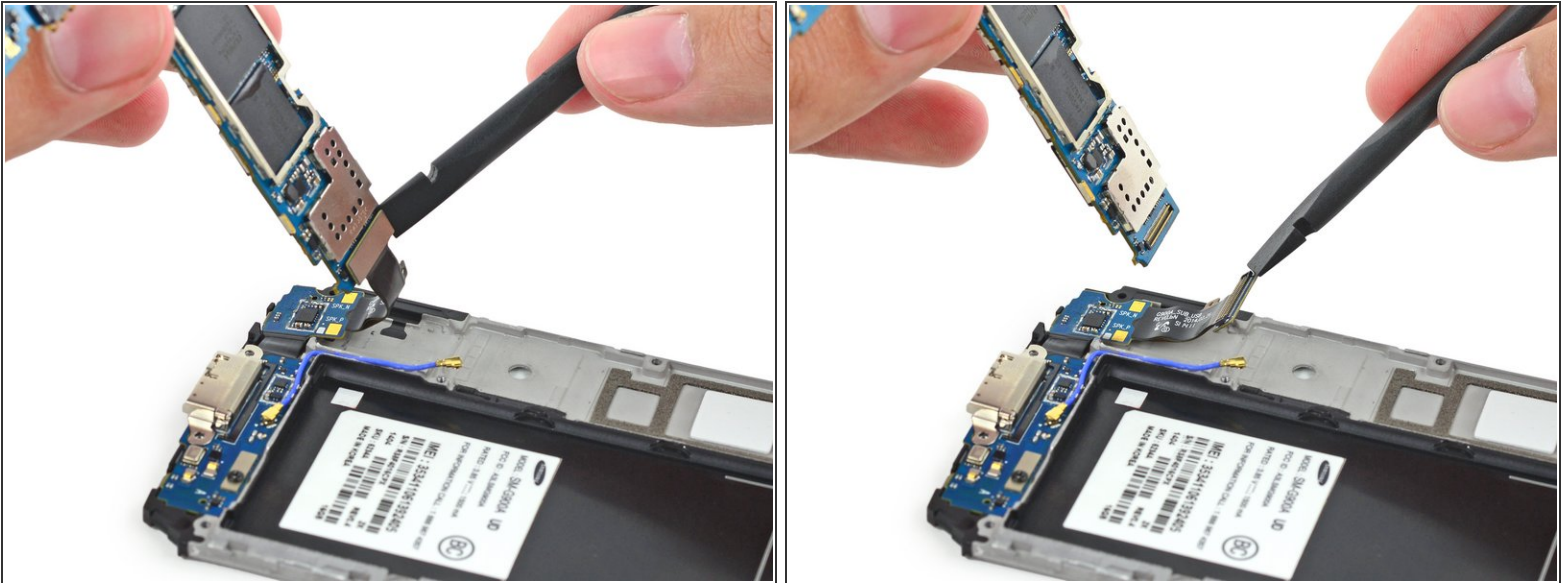
Step 3



- Pull, but do **not** remove, the camera end of the motherboard up from the midframe to allow access to the connectors on the rear.

⚠ Do **not** attempt to fully remove the motherboard as it is still attached to the interior midframe by the Micro-USB port daughterboard connector.

Step 4



- Use the flat end of a spudger to pry the daughterboard connector straight up off its socket on the motherboard.

To reassemble your device, follow these instructions in reverse order.