



TomTom ONE Motherboard Replacement

Written By: Becca



INTRODUCTION

Overtime the motherboard's wires may come apart and make the device stop working. This guide will show you how to replace the motherboard with a new one.

TOOLS:

- [Spudger](#) (1)
 - [T7 Torx Screwdriver](#) (1)
 - [T9 Torx Screwdriver](#) (1)
-

Step 1 — Motherboard



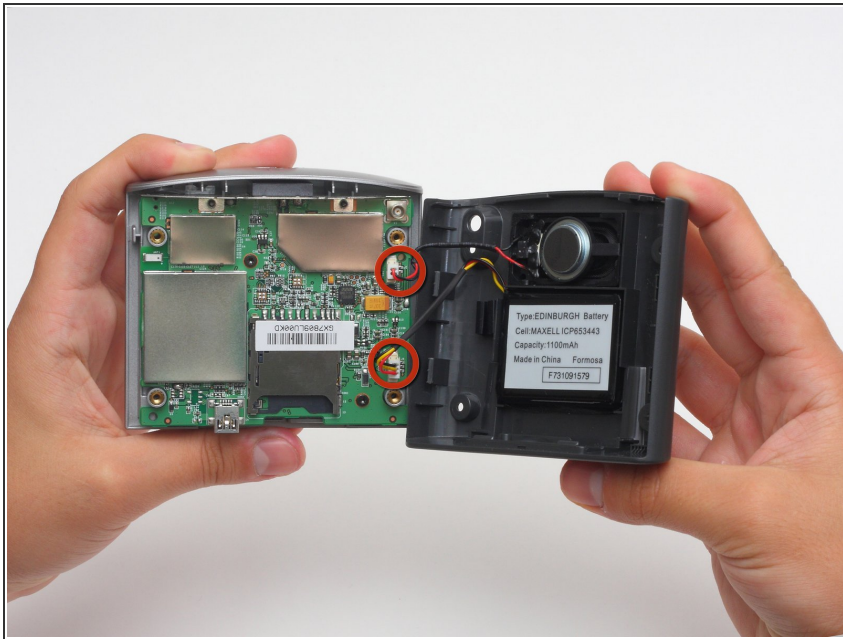
- Use a T-9 Torx screwdriver to unscrew the four screws on the back cover.

Step 2



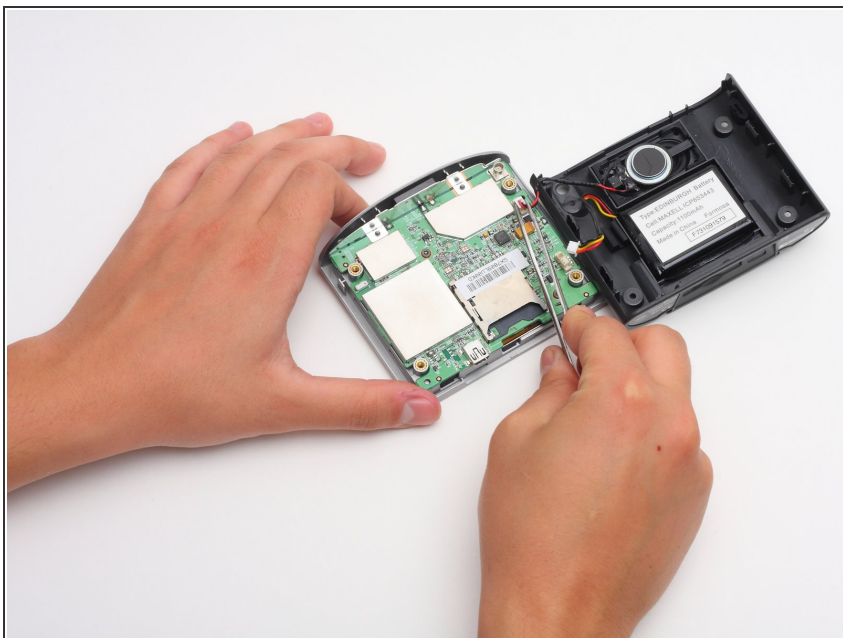
- Using the spudger, gently pry apart the back case from the front case. It is easier to start on a side and work your way around the device.

Step 3



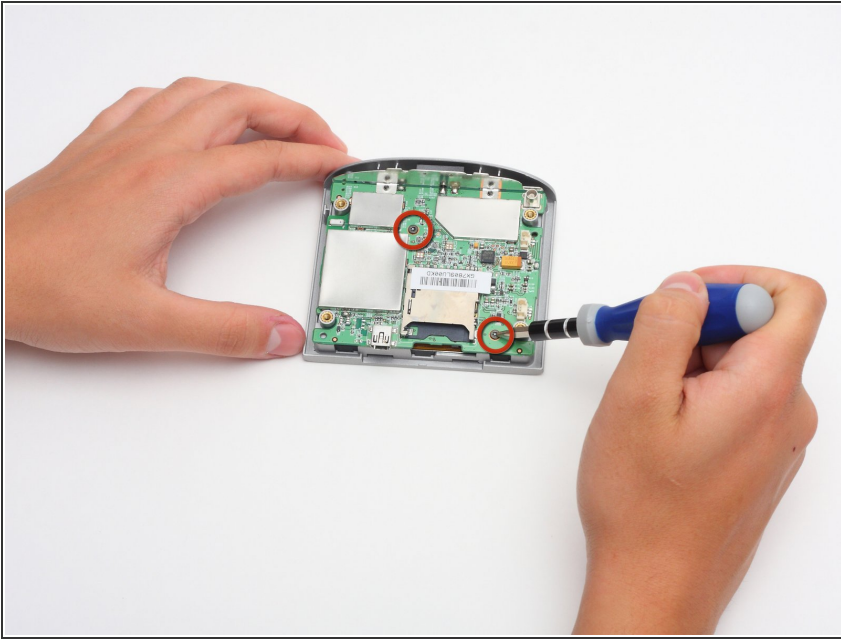
! Carefully pull the back cover apart from the front cover. Be careful not to pull too hard because there are two sets of wires connecting the device.

Step 4



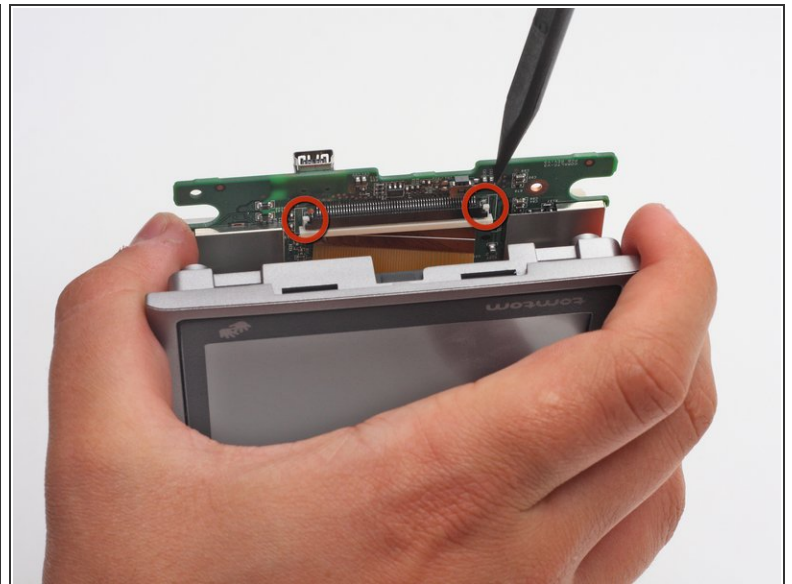
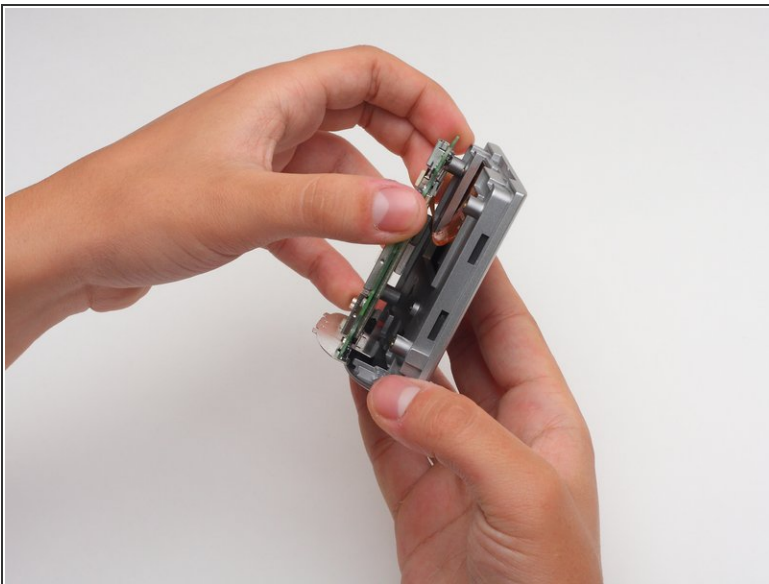
- Once the two covers are separated, use tweezers, or even your fingers, to gently disconnect the two sets of wires that are connected to the motherboard from the back cover.

Step 5



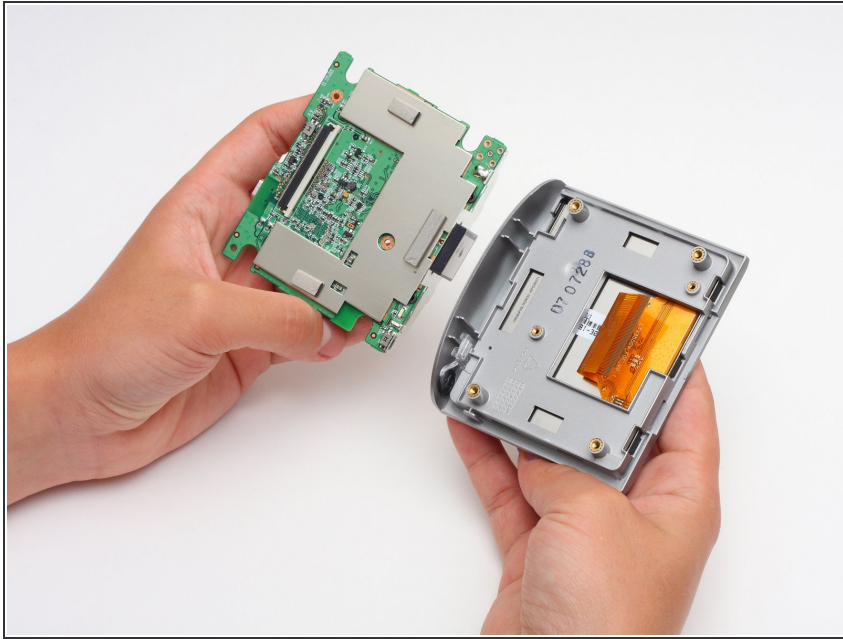
- Next, you must remove the motherboard from the front screen.
- Use a Torx T-7 screwdriver to unscrew the two screws.

Step 6



- Before you can separate the motherboard from the front cover, you must disconnect the wire connecting the two.
- To do so, you must use the back end of the spudger to push out the two white tabs connected to the wire, that holds the motherboard and front cover together.

Step 7



- The motherboard is now disconnected from the front assembly

To reassemble your device, follow these instructions in reverse order.

This document was last generated on 2019-07-17 07:55:41 AM.