



TomTom ONE Speaker Replacement

Written By: Becca



INTRODUCTION

If your speakers have stopped working, this is the guide for you! It will show you how to replace your speaker with a new one.

TOOLS:

- [Spudger](#) (1)
 - [T7 Torx Screwdriver](#) (1)
 - [T9 Torx Screwdriver](#) (1)
-

Step 1 — Speaker



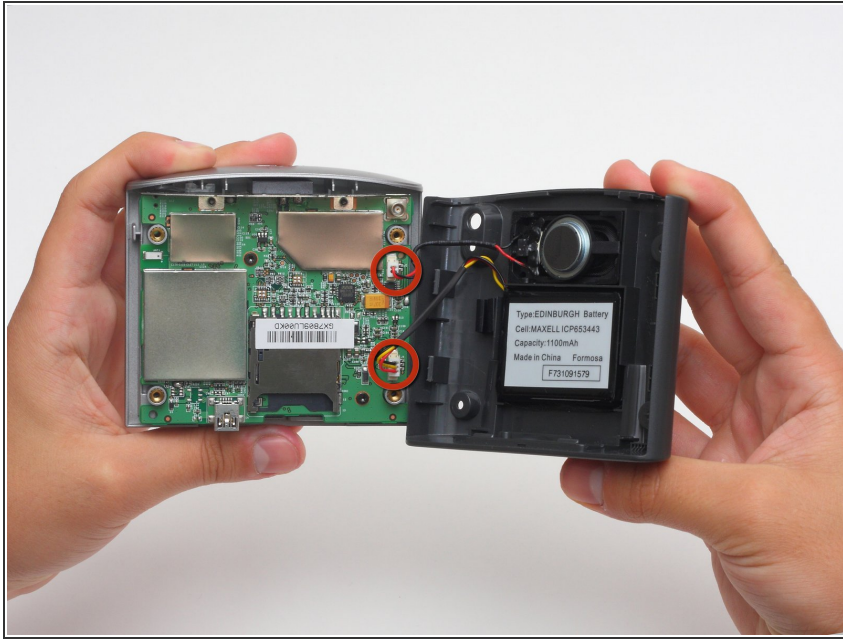
- Use a T-9 Torx screwdriver to unscrew the four screws on the back cover.

Step 2



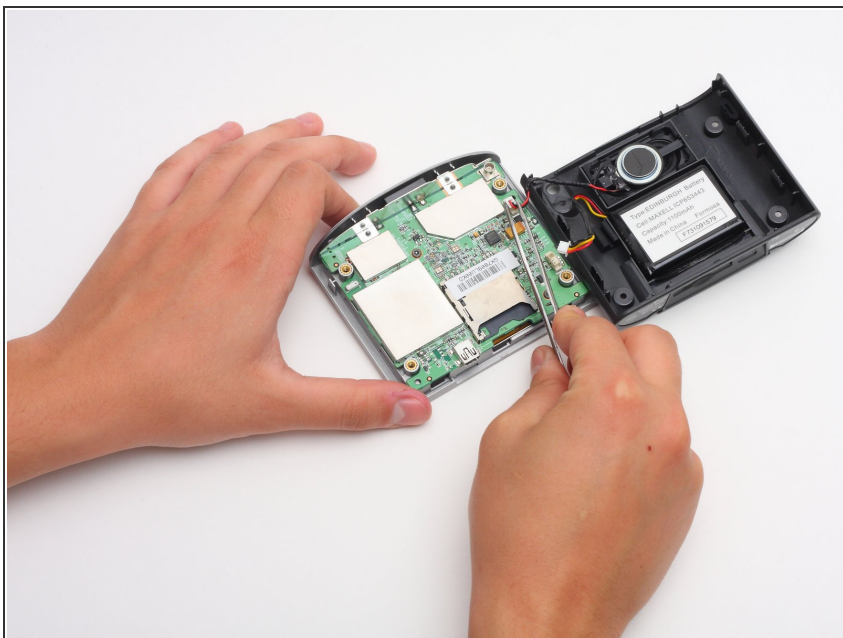
- Using the spudger, gently pry apart the back case from the front case. It is easier to start on a side and work your way around the device.

Step 3



! Carefully pull the back cover apart from the front cover. Be careful not to pull too hard because there are two sets of wires connecting the device.

Step 4



- Once the two covers are separated, use the tweezers, or even your fingers, to gently disconnect the two sets of wires that are connected to the motherboard from the back cover. You may have to wiggle the wires a little bit to get them to disconnect.

Step 5



- Take the spudger and pry out the speaker.
- ⓘ When taking out the speaker, the entire plastic shock mounting casing will come out.

To reassemble your device, follow these instructions in reverse order.