



# LG TP 1100 Earpiece Replacement

Written By: Johnny Inlow



---

## INTRODUCTION

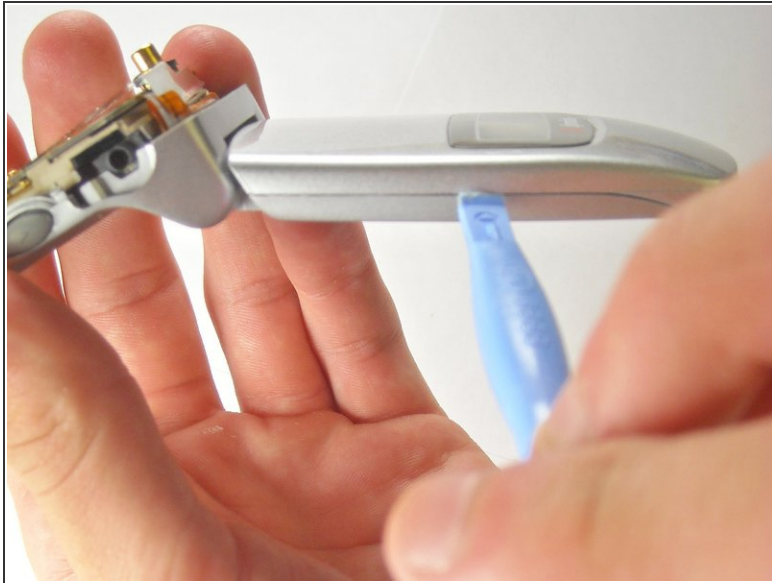
The earpiece above the screen.

---

### TOOLS:

- [iFixit Opening Tools](#) (1)
  - [Spudger](#) (1)
-

## Step 1 — Earpiece




- Slide opening tool into crevasse and pry open top cover
  - Do so on both sides
  - Do not completely remove cover

## Step 2



- Pry out speaker with heavy-duty spudger

 Caution! Wires attached to the headphone and LCD display are fragile. Do not disconnect the wires connecting the speaker

To reassemble your device, follow these instructions in reverse order.