



Disassembling Onkyo TX-800 Top case

Written By: Michael Lady



INTRODUCTION

Use this guide to remove the top case of the Onkyo TX800 receiver.

TOOLS:

- [Phillips #0 Screwdriver](#) (1)
-

Step 1 — Top case



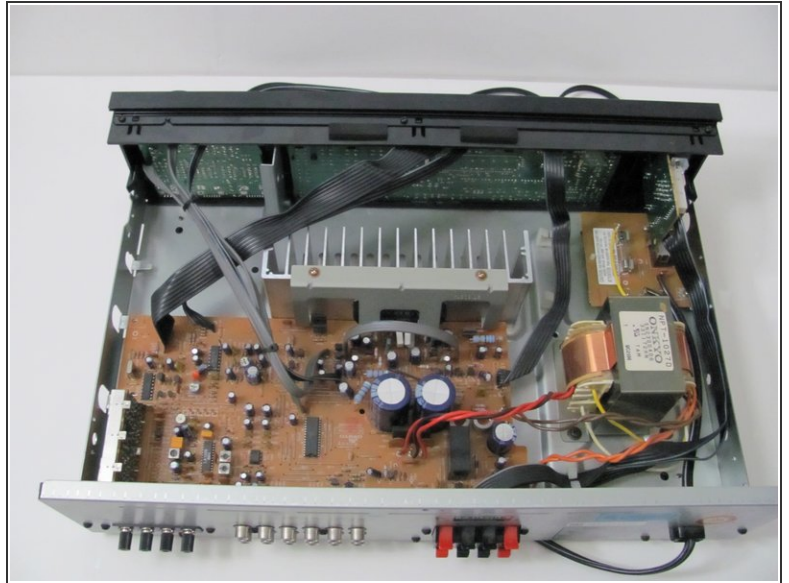
- Remove the two screws on both sides of the receiver. Keep these and the rest of the screws in a safe place.

Step 2



- Remove the top screw on the back panel.

Step 3



- Slide off the case to expose the internal components of the receiver.

To reassemble your device, follow these instructions in reverse order.