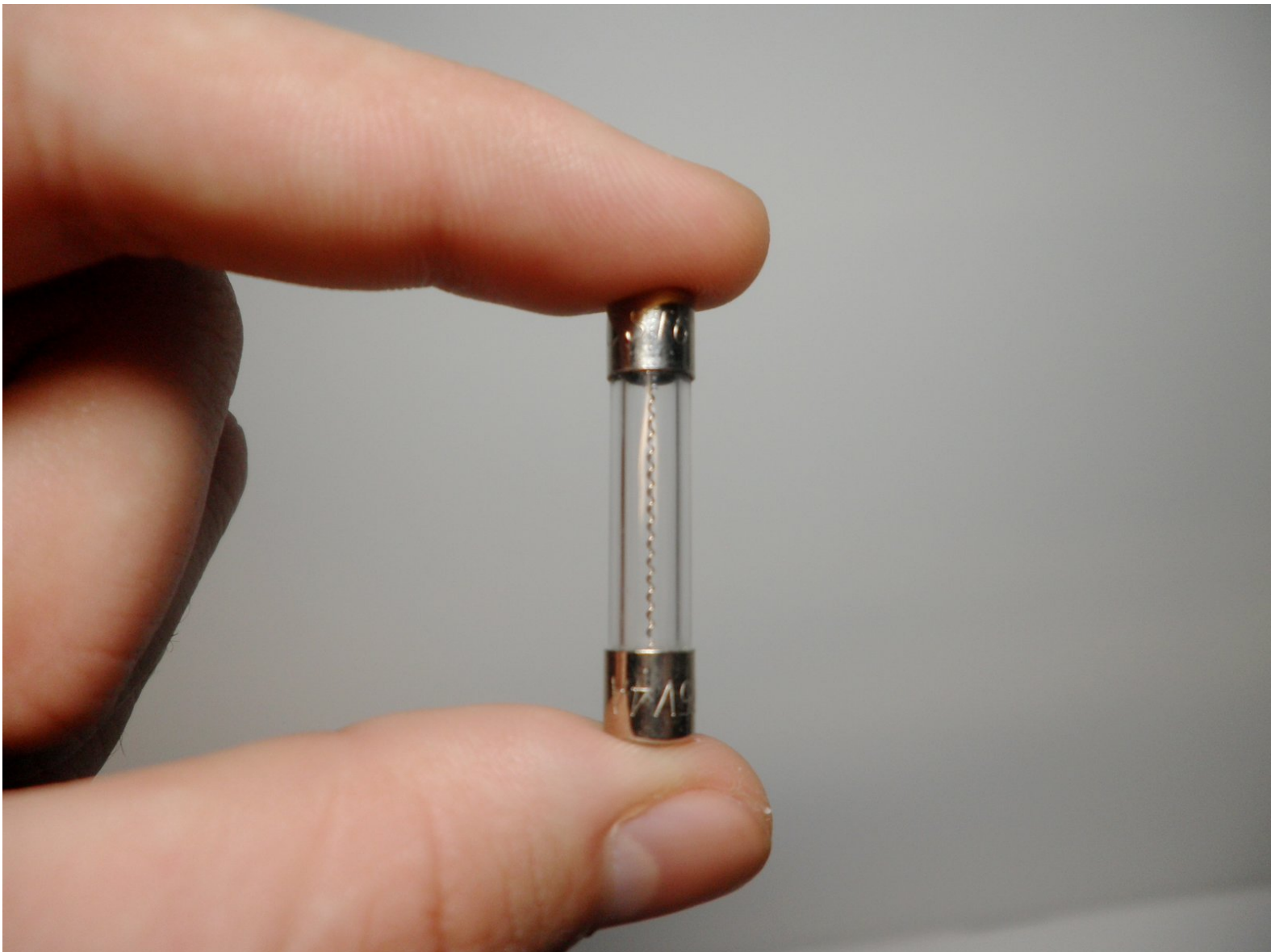




Onkyo TX-800 Power fuse Replacement

Follow this guide to replace the power fuse of the Onkyo TX-800.

Written By: Michael Lady



INTRODUCTION

Replace the power fuse for the Onkyo TX800 receiver.



TOOLS:

- [Phillips #00 Screwdriver](#) (1)



PARTS:

- [Fuse - 125 Volt, 4 Amp](#) (1)

Step 1 — Top case



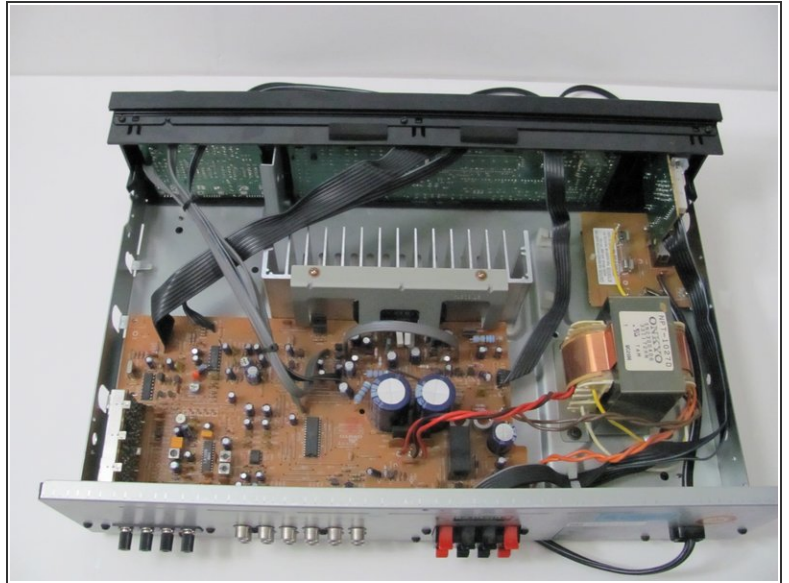
- Remove the two screws on both sides of the receiver. Keep these and the rest of the screws in a safe place.

Step 2



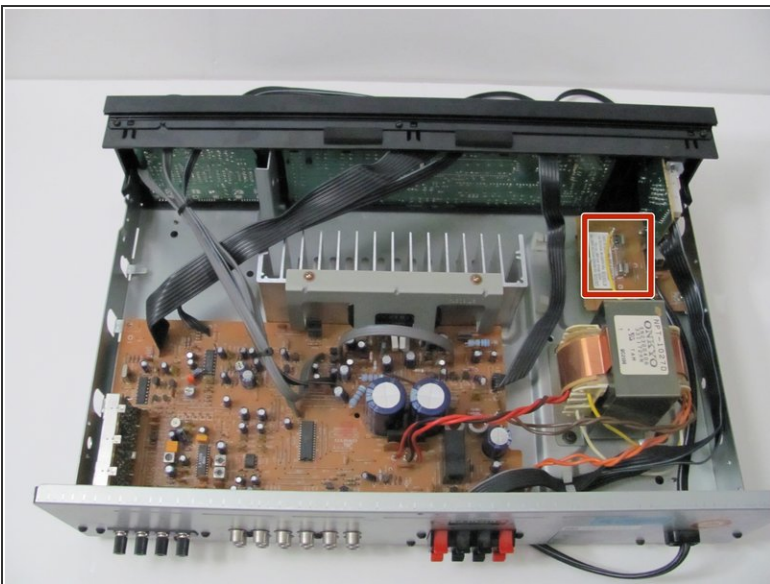
- Remove the top screw on the back panel.

Step 3



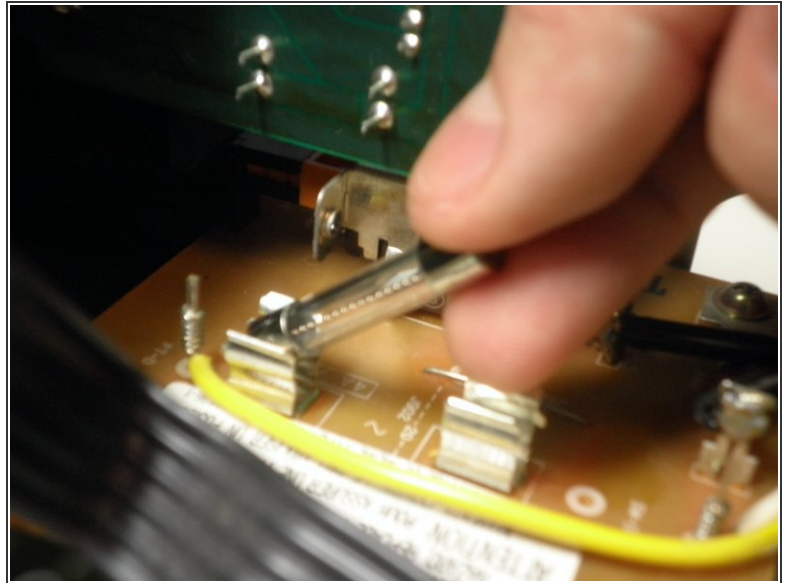
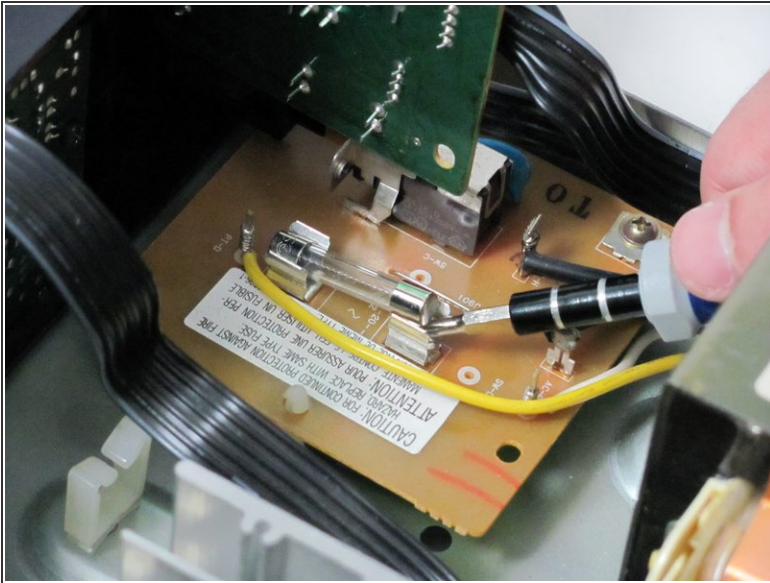
- Slide off the case to expose the internal components of the receiver.

Step 4 — Power fuse



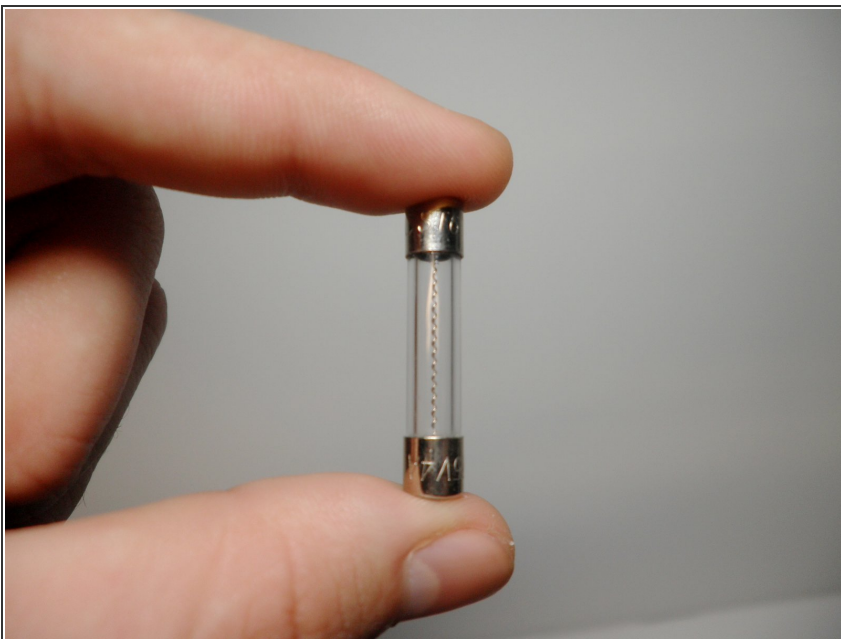
- Locate the fuse.

Step 5



- Gently wedge a small screwdriver in between one side of the fuse and the contact.
- Remove the fuse with your thumb and forefinger.

Step 6



- Examine the fuse. If the wire within it is broken, you will need to replace it with a new [125 Volt, 4 Amp fuse](#).

