



Disabling DualShock 4's Blue LED

Annoyed by the Always-On Blue LED ? No more !

Written By: Darie H



INTRODUCTION

Disabling DualShock 4's Blue LED

TOOLS:

- [Phillips #00 Screwdriver](#) (1)
 - [iFixit Opening Tools](#) (1)
-

Step 1 — Disabling DualShock 4's Blue LED



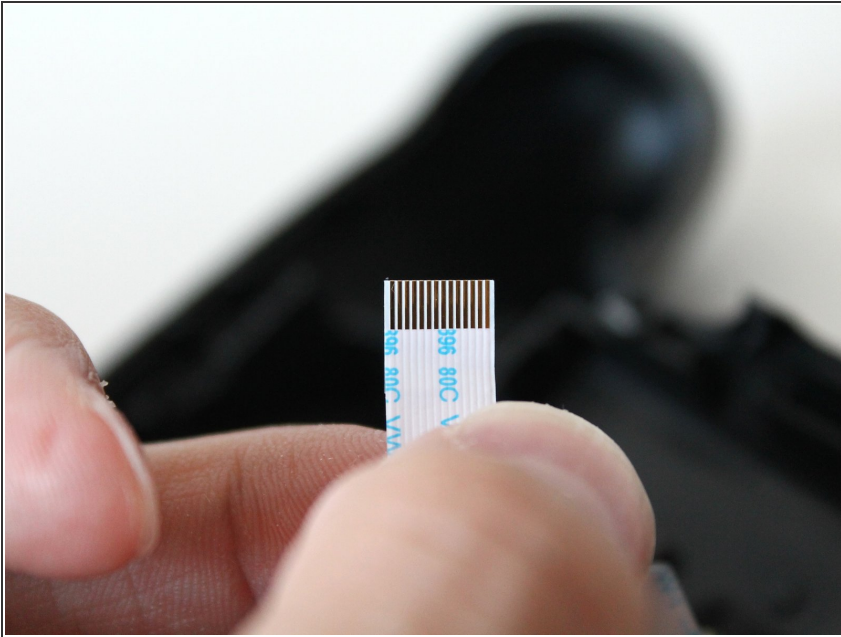
- Remove the 4 Philips screws on the back of the controller.

Step 2



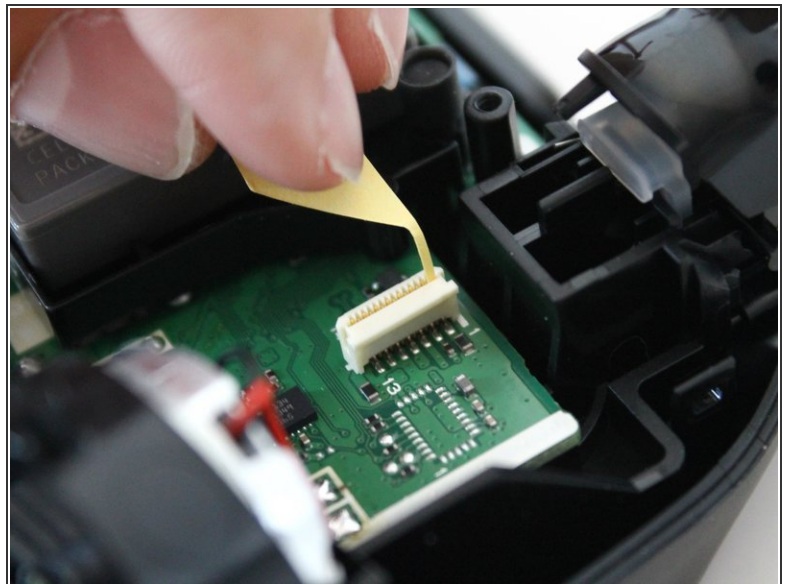
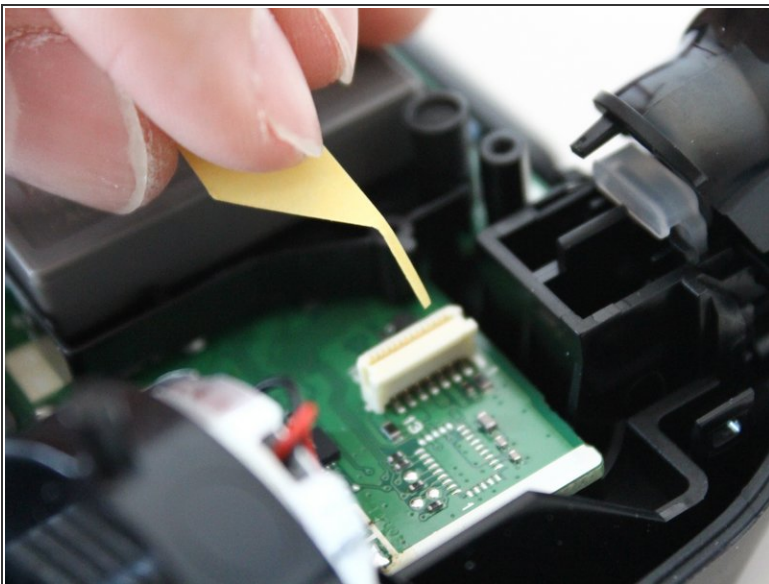
- A good place to start opening the bottom half of the controller is from its legs
- ⚠ Remove the bottom half of the controller while monitoring the triggers and springs within.

Step 3



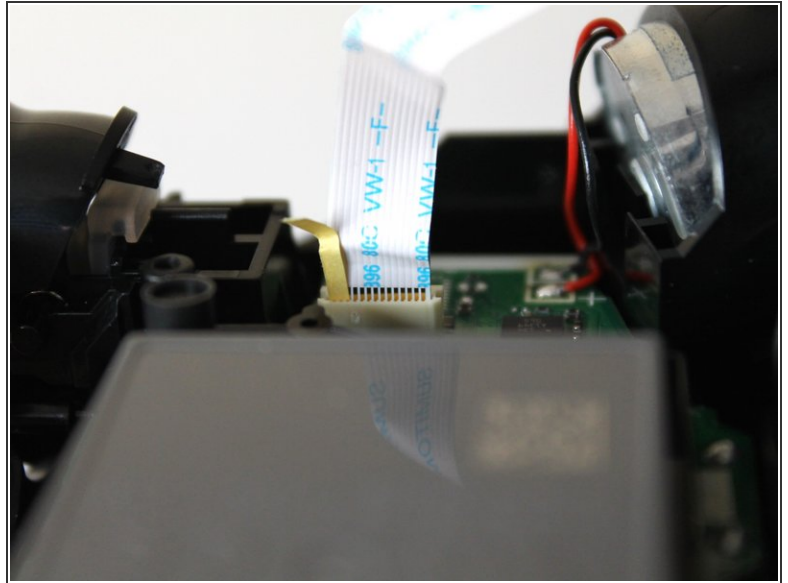
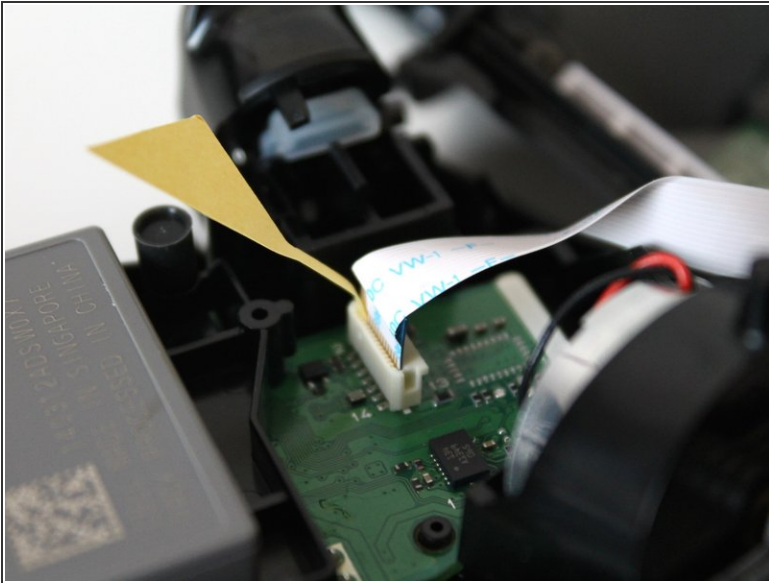
- Within the center of the controller is a LED/USB Connector Assembly attached to a ribbon cable.
- Pull the ribbon cable out.

Step 4



- Place a thin piece of paper in front of the last 2 pins (counting from left to right).
 - ⓘ The paper will prevent the motherboard from completing the circuit that enables the blue LED.

Step 5



- ⚠ Make sure you don't twist the ribbon cable when inserting it - it's easy to lose sight of this when fiddling with the pins.

Step 6



- Insert back ribbon cable with piece of thin paper already inserted.

Step 7



- Connect bottom half of DualShock 4 controller together. Rescrew 4 Phillips screws on back of controller.

All you have to do now - is embrace the darkness; don't forget to screw the thing back together though :)