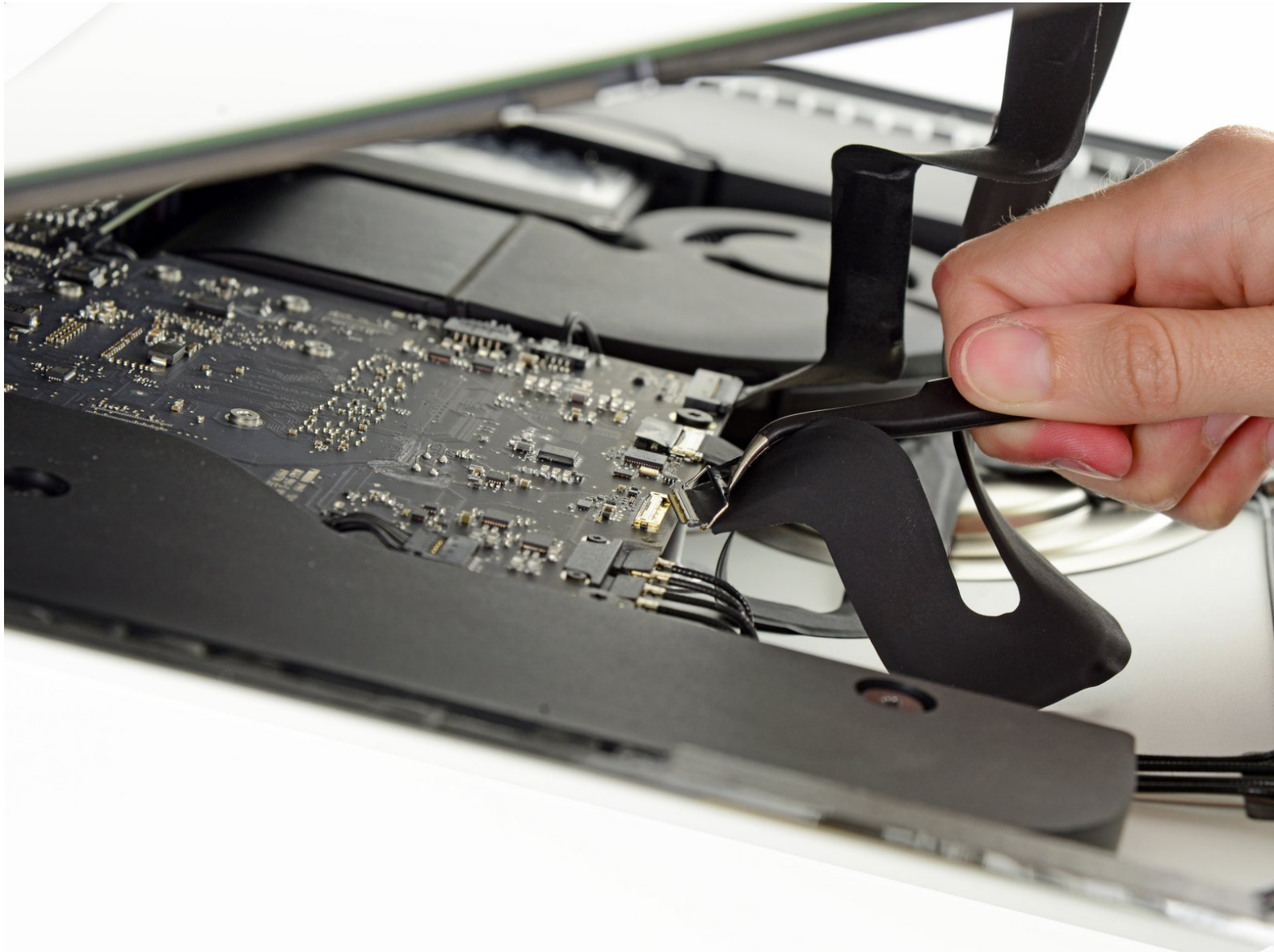




iMac Intel 21.5" EMC 2805 Display Assembly Cables Replacement

Prereq to remove the display.

Written By: Walter Galan



INTRODUCTION

Prereq to remove the display.

TOOLS:

- [Tweezers](#) (1)
-

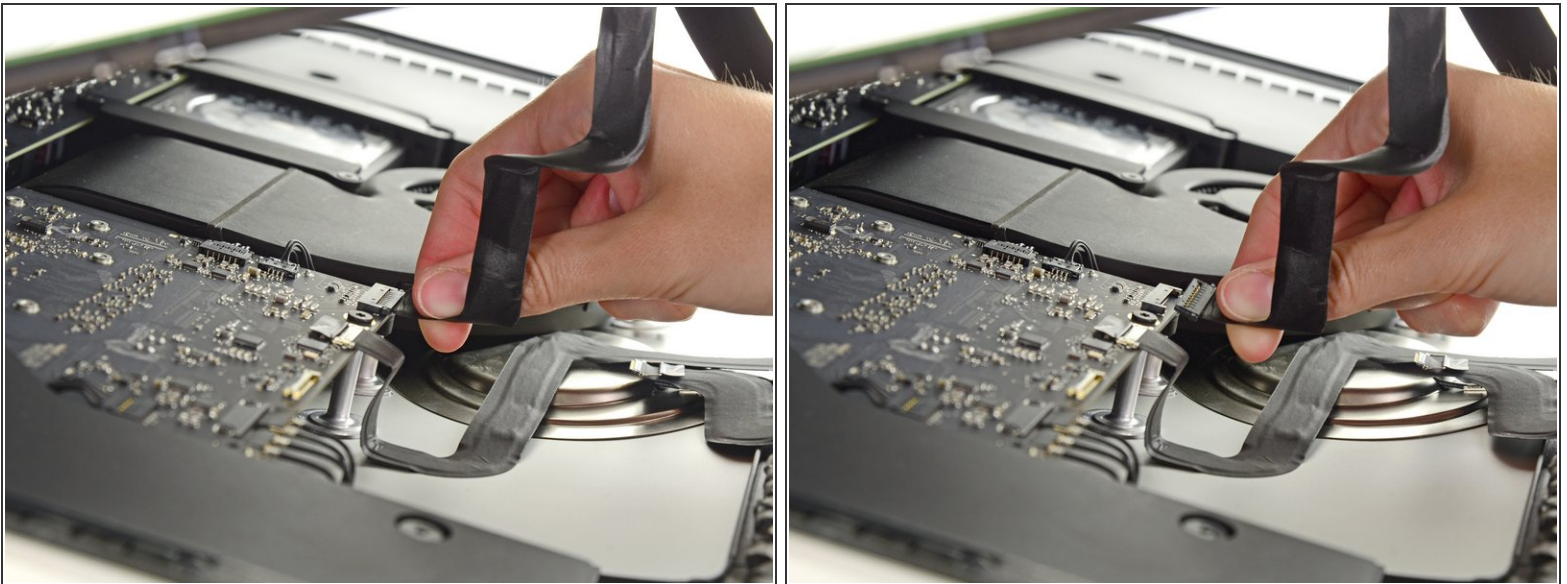
Step 1 — Display Assembly Cables



- Use a pair of tweezers to flip up the metal retaining bracket on the display data cable.
- Carefully pull the display data cable from its socket on the logic board.

⚠ Be sure to pull the display data cable connector straight out of its socket.

Step 2



- While holding the display up with one hand, use the other hand to unplug the display power cable.
- ⓘ Lift the display up enough to have easy access to the connector, but not so much that you stretch the cables and stress their connections (about 8").

To reassemble your device, follow these instructions in reverse order.

This document was last generated on 2019-07-15 10:53:15 AM.