



iMac Intel 21.5" EMC 2805 Hard Drive Assembly Replacement

Prereq only.

Written By: Walter Galan

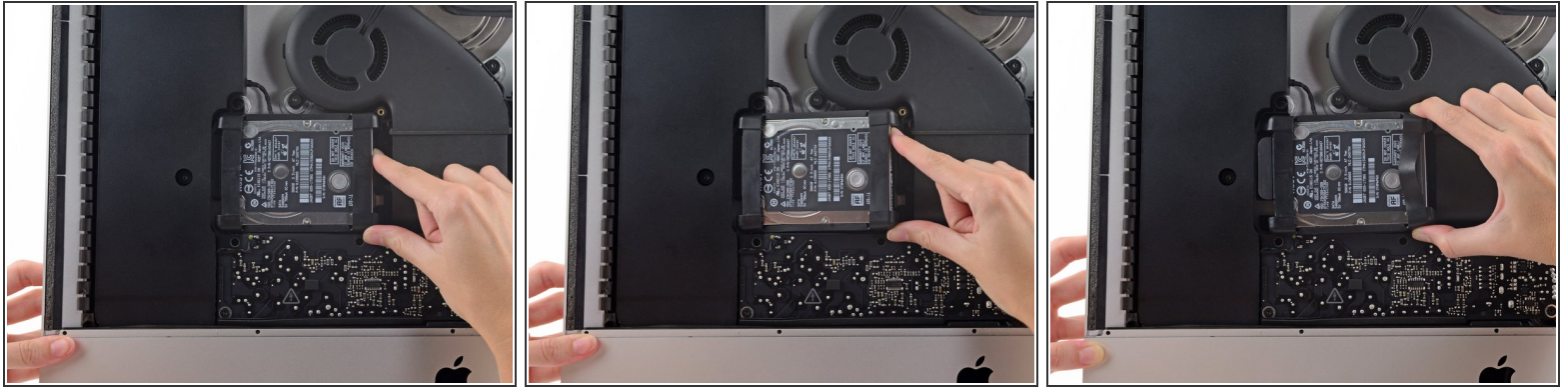


INTRODUCTION


Prereq only.

-
-  **TOOLS:**
- [Spudger](#) (1)
-

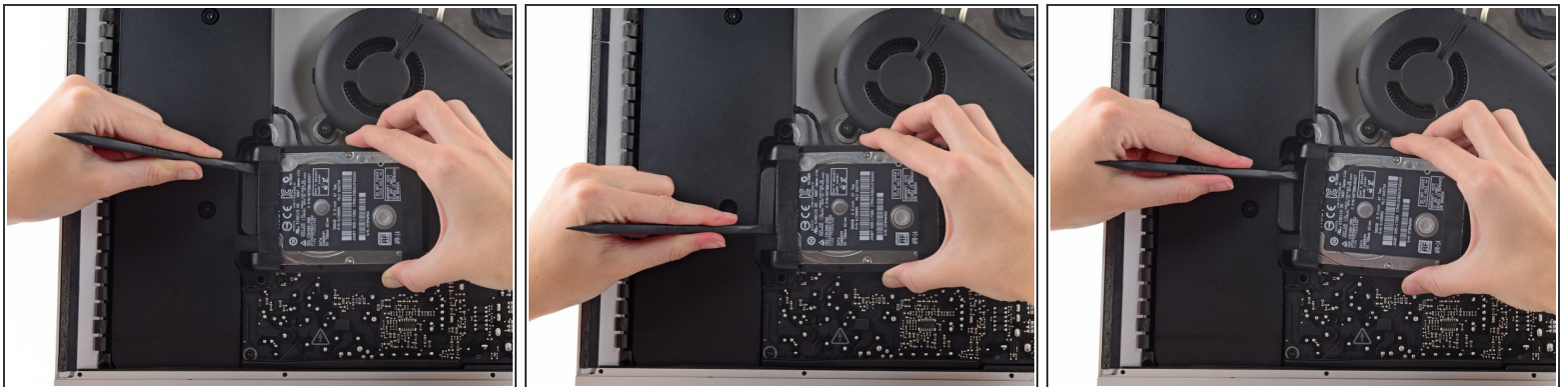
Step 1 — Hard Drive Assembly



- Lift the hard drive from the edge nearest the logic board and pull it slightly out of its recess.

 The hard drive is attached by a single SATA power/data cable, do not attempt to fully remove it from the iMac.

Step 2



- Use a spudger to disconnect the single SATA power and data combo cable.

Step 3



- Remove the hard drive from the iMac.

To reassemble your device, follow these instructions in reverse order.