



# IBM ThinkPad 560z Modem Replacement

How to replace an IBM ThinkPad 560z modem.

Written By: Derek Driscoll



## INTRODUCTION

This repair guide will aid you in accessing and ejecting your IBM ThinkPad 560z modem so that it can be replaced. The modem is very simple to access and you will not need any special tools or skills.

---

### TOOLS:

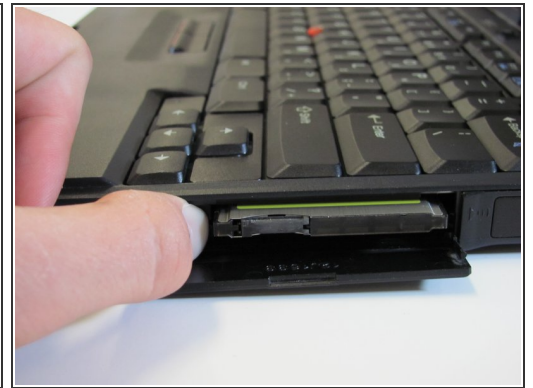
- [Fingers](#) (10)
-

## Step 1 — Modem



- Open the latch on the right side of the computer.

## Step 2



- Flip the button to the right so it is sticking straight out.
- Push the button in to eject the modem.

To reassemble your device, follow these instructions in reverse order.

This document was last generated on 2019-01-15 05:40:47 AM.