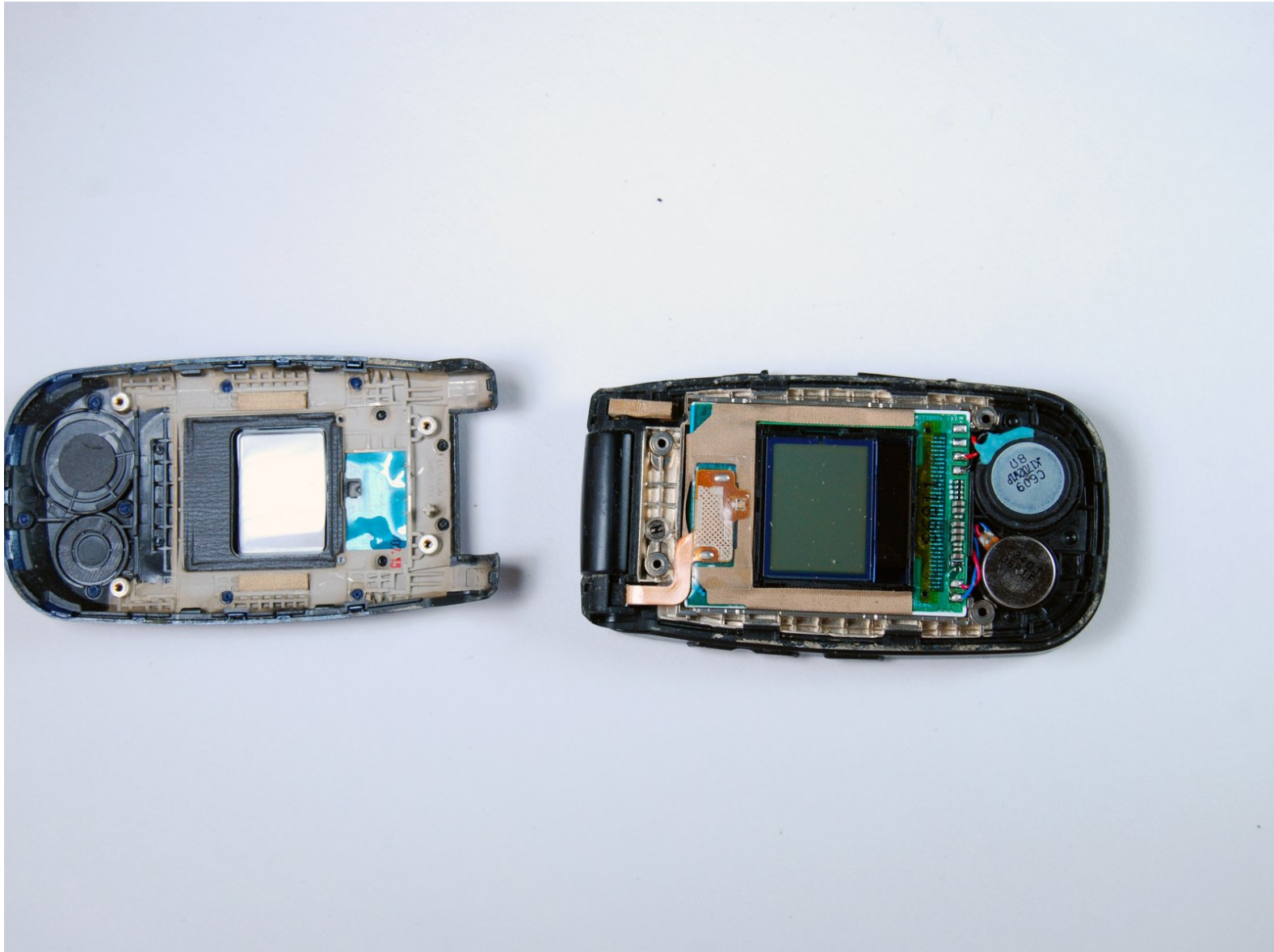




# LG LX150 Front Cover Replacement

Written By: Tye Barba



---

## INTRODUCTION

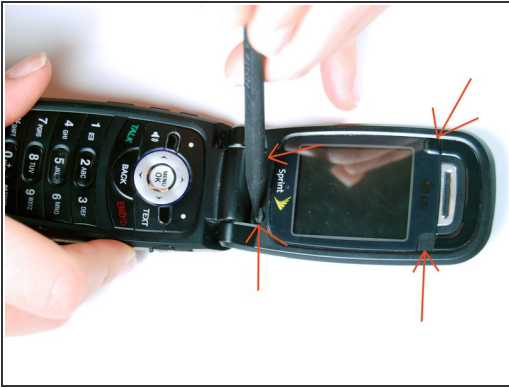
Use this guide to remove the LG LX150's front cover.

---

### TOOLS:

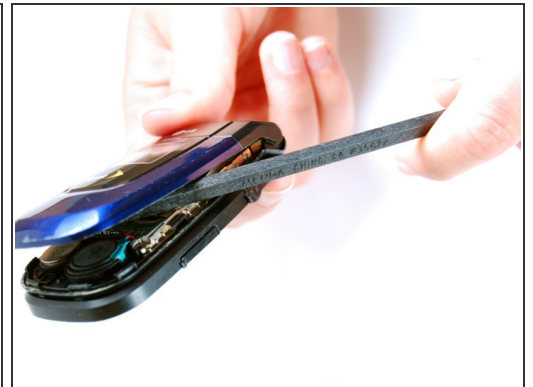
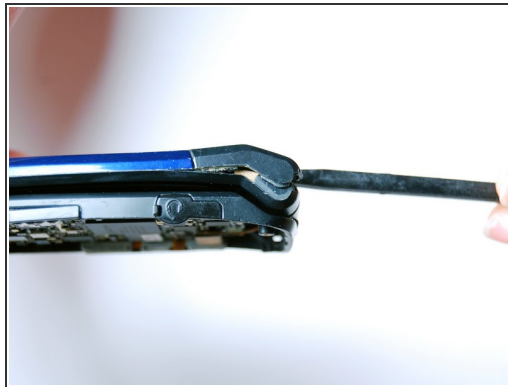
- [Phillips #00 Screwdriver](#) (1)
  - [Spudger](#) (1)
-

## Step 1 — Front Cover



- Use the spudger to pry out the indicated rubber squares.
- Use the #0 Phillips screwdriver to take out the revealed screws.

## Step 2



- Carefully lodge the spudger between the face plate and the hinge mechanism.
- Gently pry the face plate until it releases from place holders.

To reassemble your device, follow these instructions in reverse order.