



MacBook Core Duo Hard Drive Replacement

MacBook Core Duo hard drive replacement or upgrade.

Written By: iRobot



INTRODUCTION

[video: <http://www.youtube.com/watch?v=k22795agwmw>]

Replace or upgrade your MacBook Core Duo's hard drive with a new SATA hard drive or SSD up to 9.5mm thick. A new drive can give you extra storage space and also increase your MacBook's speed.

TOOLS:

- Coin (1)
- Phillips #00 Screwdriver (1)
- T8 Torx Screwdriver (1)

PARTS:

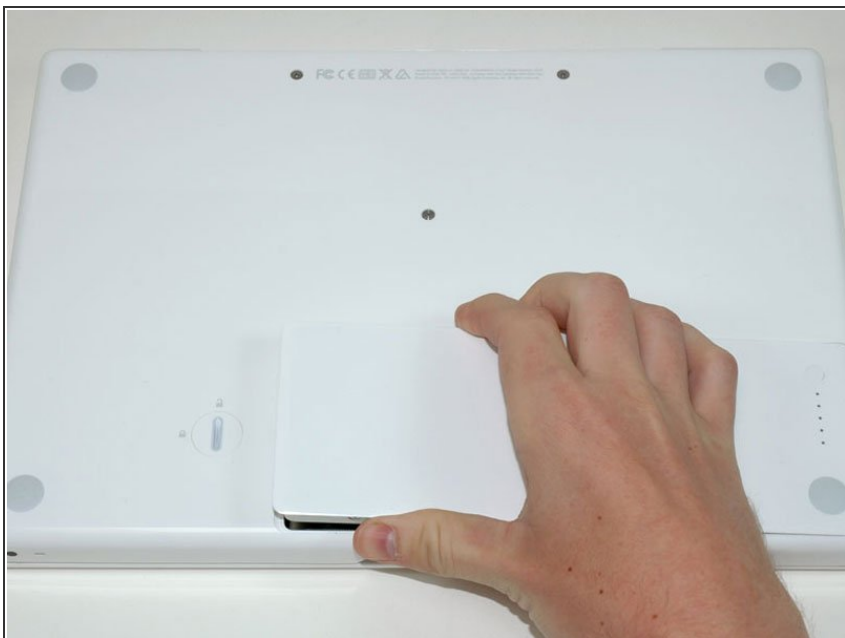
- MacBook and MacBook Pro (Non-Retina) SSD Upgrade Bundle (1)
- 1 TB SSD Hybrid 2.5" Hard Drive (1)
Upgrade Kit
This kit contains the drive and all tools needed.
- 500 GB SSD Hybrid 2.5" Hard Drive (1)
Upgrade Kit
This kit contains the drive and all tools needed.
- 500 GB 5400 RPM 2.5" Hard Drive (1)
- 1 TB 5400 RPM 2.5" Hard Drive (1)
- 250 GB SSD (1)
- 500 GB SSD (1)
- 1 TB SSD (1)
- MacBook Hard Drive Bracket (1)
- 320 GB 5400 RPM 2.5" Hard Drive (1)

Step 1 — Battery



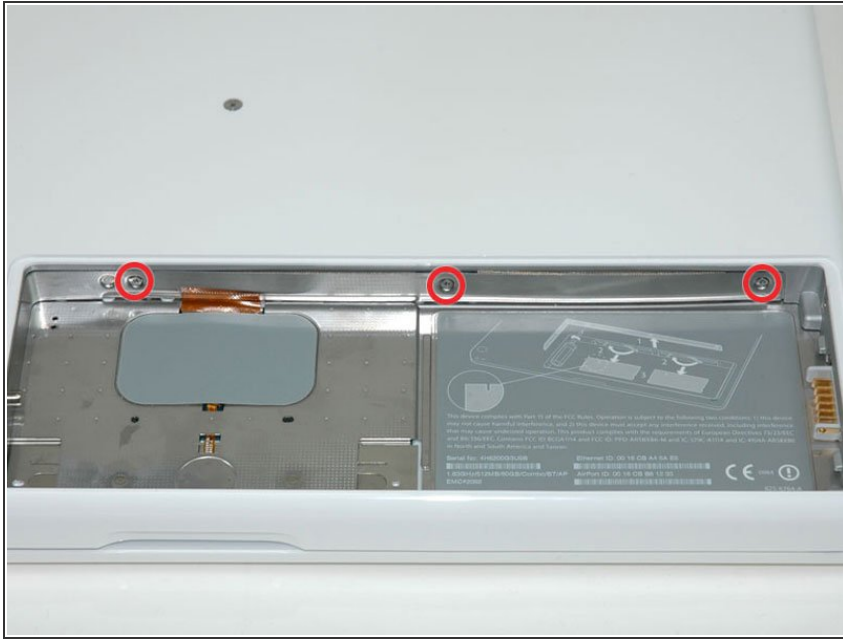
- Use a coin or spudger to rotate the battery-locking screw 90 degrees clockwise.

Step 2



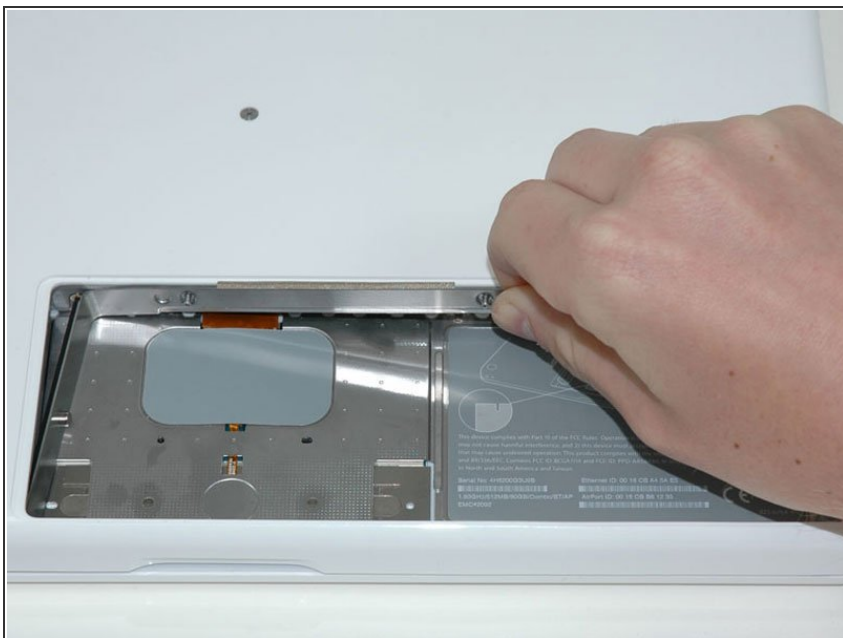
- Lift the battery out of the computer.

Step 3 — Memory Cover



- Remove the three evenly-spaced Phillips screws from along the rear wall of the battery compartment.
- ★ The screws are captive to the metal memory cover.
- ★ When replacing the battery casing, use a spudger to re-insert the foam cushioning behind the rear wall for proper battery spacing.

Step 4



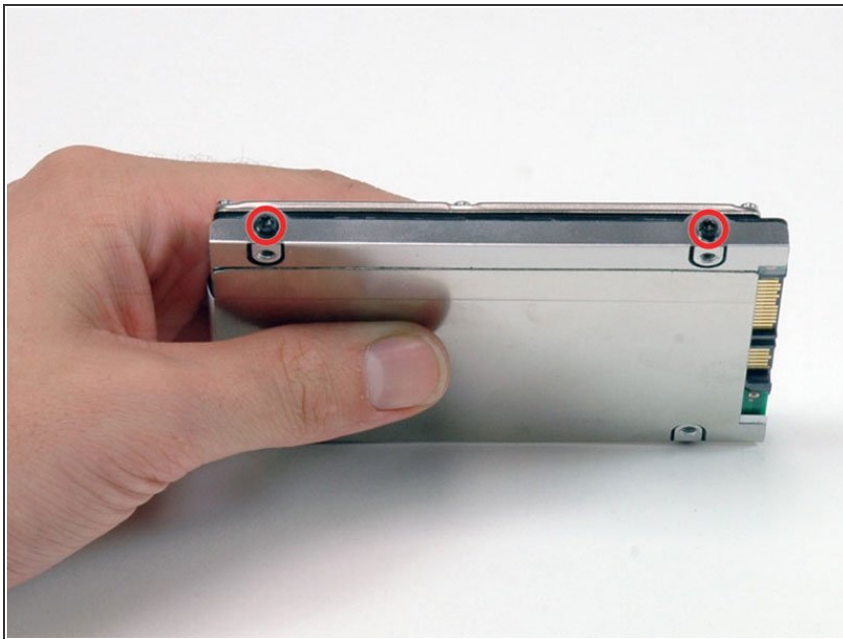
- Lift up on L-shaped memory cover, slide it to the right, and lift it out of the computer.

Step 5 — Hard Drive



- Grasp the white plastic tab attached to the hard drive and pull it to the right, removing the hard drive from the computer.
- ☑ The hard drive goes back into its compartment with the label facing down.

Step 6 — Hard Drive



- Remove the two black T8 Torx screws securing the silver bracket to the hard drive.

Step 7



- Rotate the hard drive and remove the two black T8 Torx screws on the other side of the drive.

Step 8



- Lift the silver metal hard drive bracket off of the hard drive.
- ★ You'll need to transfer this metal bracket to your new hard drive.
- ⓘ If you are installing a new hard drive, we have an [OS X install guide](#) to get you up and running.

To reassemble your device, follow these instructions in reverse order.