



# LG LX150 Screen Replacement

Written By: Tye Barba



---

## INTRODUCTION

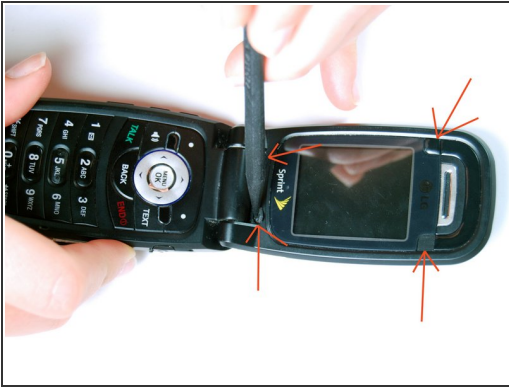
Use this guide to remove the LG LX150's screen.

---

### TOOLS:

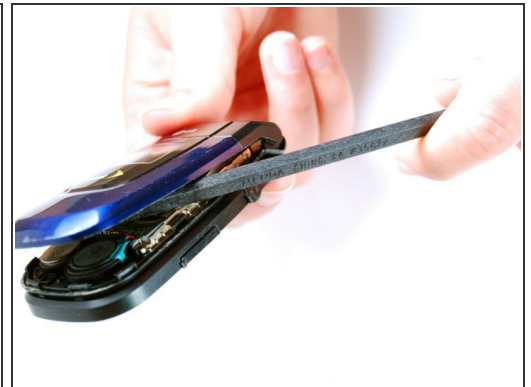
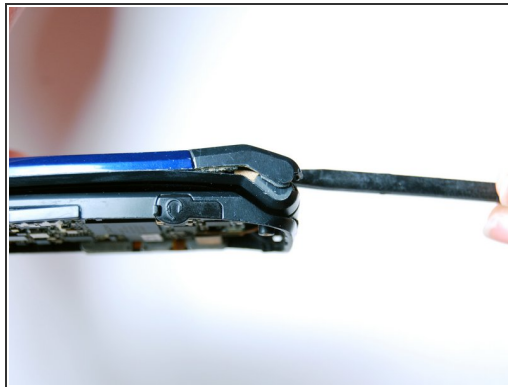
- [Spudger](#) (1)
-

## Step 1 — Front Cover



- Use the spudger to pry out the indicated rubber squares.
- Use the #0 Phillips screwdriver to take out the revealed screws.

## Step 2



- Carefully lodge the spudger between the face plate and the hinge mechanism.
- Gently pry the face plate until it releases from place holders.

## Step 3 — Screen



**⚠** Apply even amounts of force upon removing screen, otherwise cracking may occur.

- Gently loosen the screen from its adhesive by pressing around the screen's rear perimeter with a spudger. Place upward pressure in crevices between face plate and screen.
- Carefully use both thumbs and apply pressure to the back of the screen to pop out.

To reassemble your device, follow these instructions in reverse order.