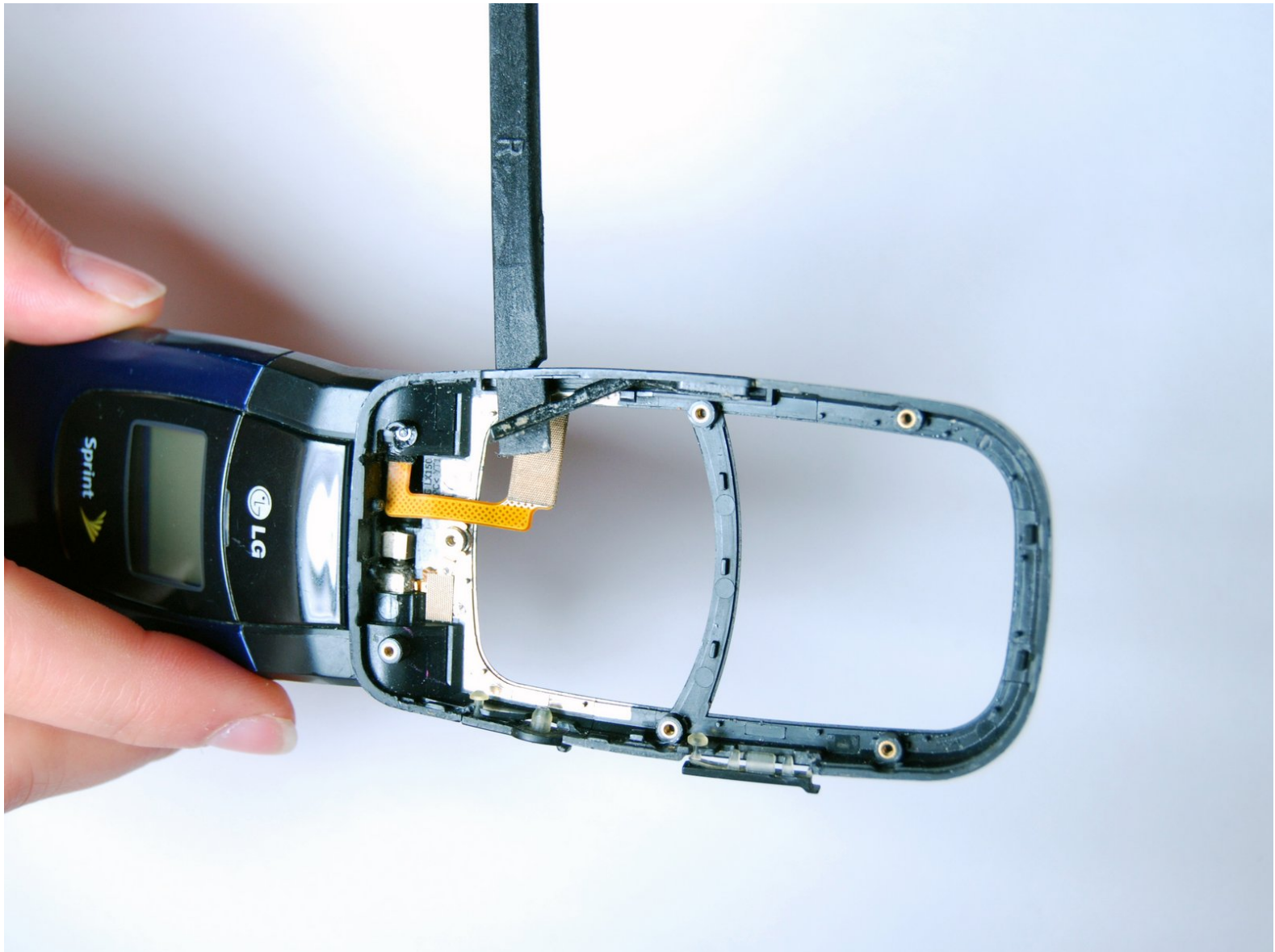




# LG LX150 Volume Toggle Replacement

Written By: Andrea



---

## INTRODUCTION

Use this guide to replace your Volume Toggle Button.

---

### TOOLS:

- [Phillips #00 Screwdriver](#) (1)
  - [Spudger](#) (1)
-

## Step 1 — Back Cover



- First locate the button and the bottom of the cover where the arrow is. Press down on the button.
- While pushing down on the button, slide the cover up towards the hinge until the cover comes off.
- The battery will be visible after removing the back cover.

## Step 2 — Battery



- Simultaneously push the battery forward and pull up from the bottom.

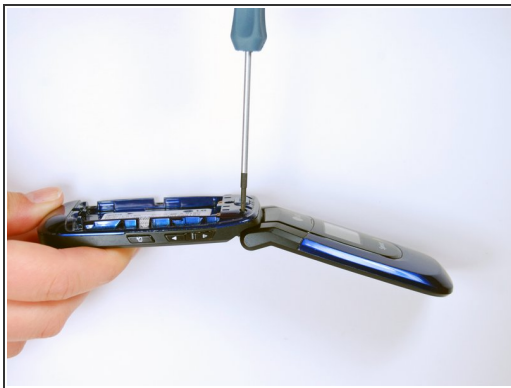
## Step 3



- Once the battery is loose it can be easily removed. The phone's ID tag will be visible once the battery is removed.

**⚠** Be careful of damaged or leaking batteries. If your battery appears damaged, remove it with care and find a replacement.

## Step 4 — Internal Back Cover



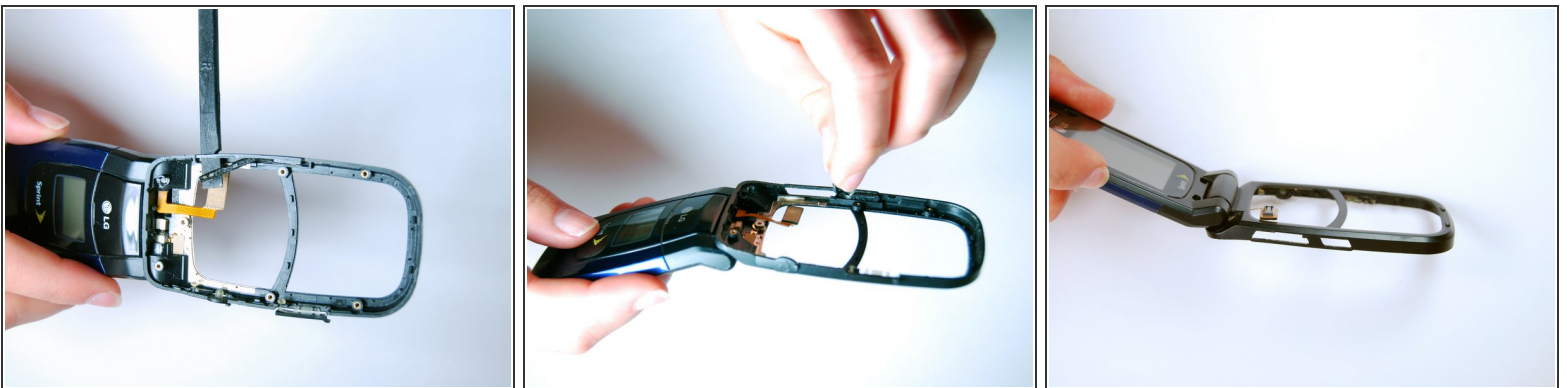
- Remove the 7 phillips screws indicated by the red arrows using the phillips #0 screwdriver.
- Insert the flat end of the spudger in-between the black and blue phone casing on the side of the phone and split the the blue and black apart. Work your way around the perimeter of the cover, loosening all corners.

## Step 5



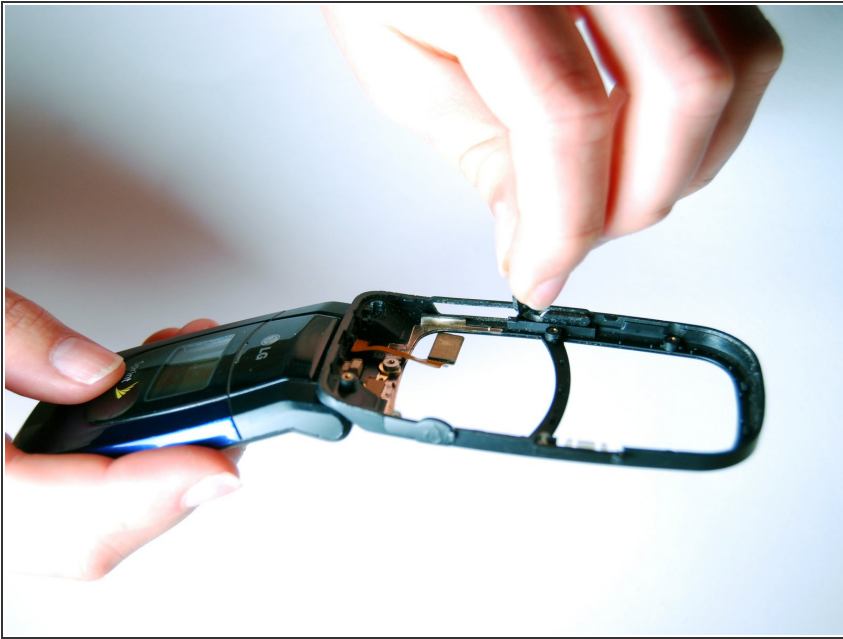
- Remove the internal back cover after loosening all the corners.
- The second picture below is what you will see after removing the internal back cover.

## Step 6 — Volume Toggle



- To remove the volume toggle button, use the spudger to push the original button out of its socket.
- After loosening the volume toggle button from its socket, finish pulling it out with your fingers.
- ⓘ The demonstration pictures show the motherboard removed; however, this is not necessary to replace the volume toggle.

## Step 7



- To finish the replacement, insert your new volume toggle button and reassemble your LG LX150 to resume use.

To reassemble your device, follow these instructions in reverse order.

This document was last generated on 2019-07-11 03:29:29 AM.