

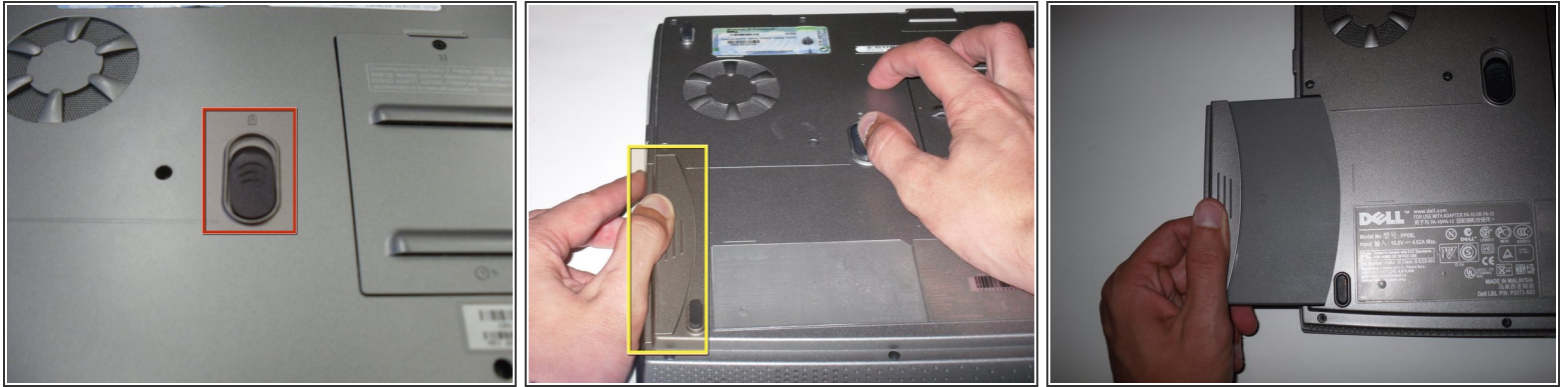


---

 **TOOLS:**

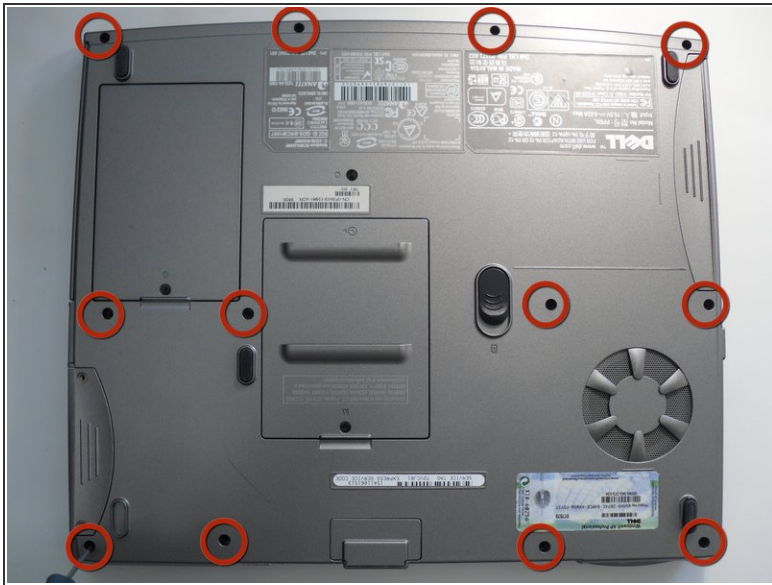
- [Phillips #00 Screwdriver \(1\)](#)
-

## Step 1 — Removing Dell Inspiron 1150 Battery



- Place the laptop upside down on a clean, flat surface.
- Locate the battery release button with the padlock symbol above it.
- Slide the battery release button towards the padlock symbol and hold it there. Note that the button is spring loaded and will return if released.
  - ⓘ The battery is now released from the battery compartment.
- Gently remove the battery from the side of the laptop.

## Step 2 — Removing the Palm Rest (Top Cover)



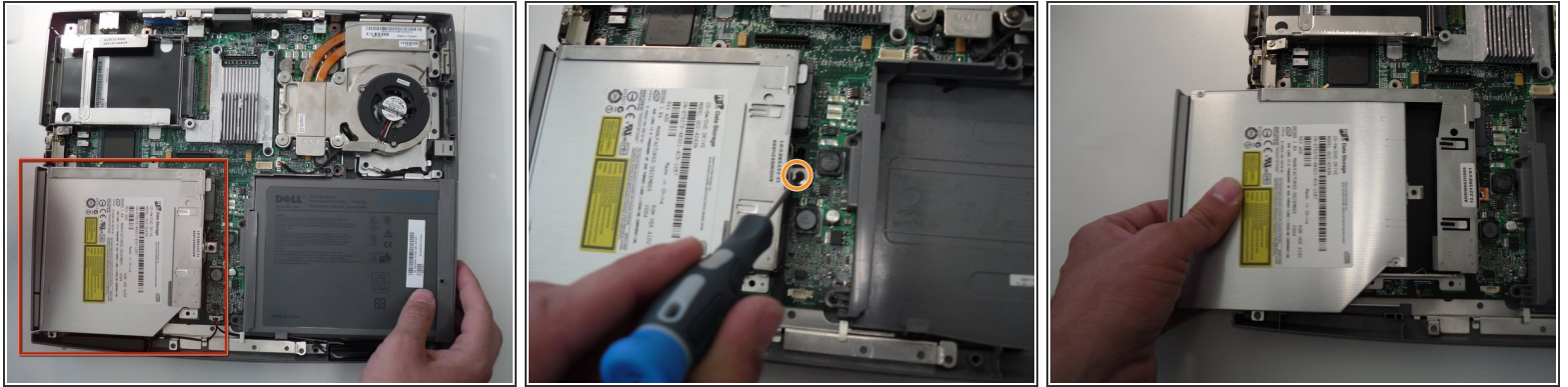
- Position the computer upside down.
- Remove the twelve M2.5 x 8-mm screws.
- Remove the M2.5 x 4-mm screw from the battery bay

### Step 3



- Position the computer keyboard side up.
  - Remove the two M2.5 x 5-mm screws from the top of the palm rest.
  - Disconnect the mouse pad cable from the main board.
  - Separate the palm rest from the base by lifting its inside edge. Start at the back center.
- ⚠ Be careful to avoid damaging the palm rest while separating it from the base.

## Step 4 — Removing Dell Inspiron 1150 Optical drive



- Locate the optical disk drive on the bottom left hand side of the laptop.
- Remove the single screw holding the optical disk drive in the chassis.
- Remove the optical disk drive by gently pulling on the outer edge.

To reassemble your device, follow these instructions in reverse order.