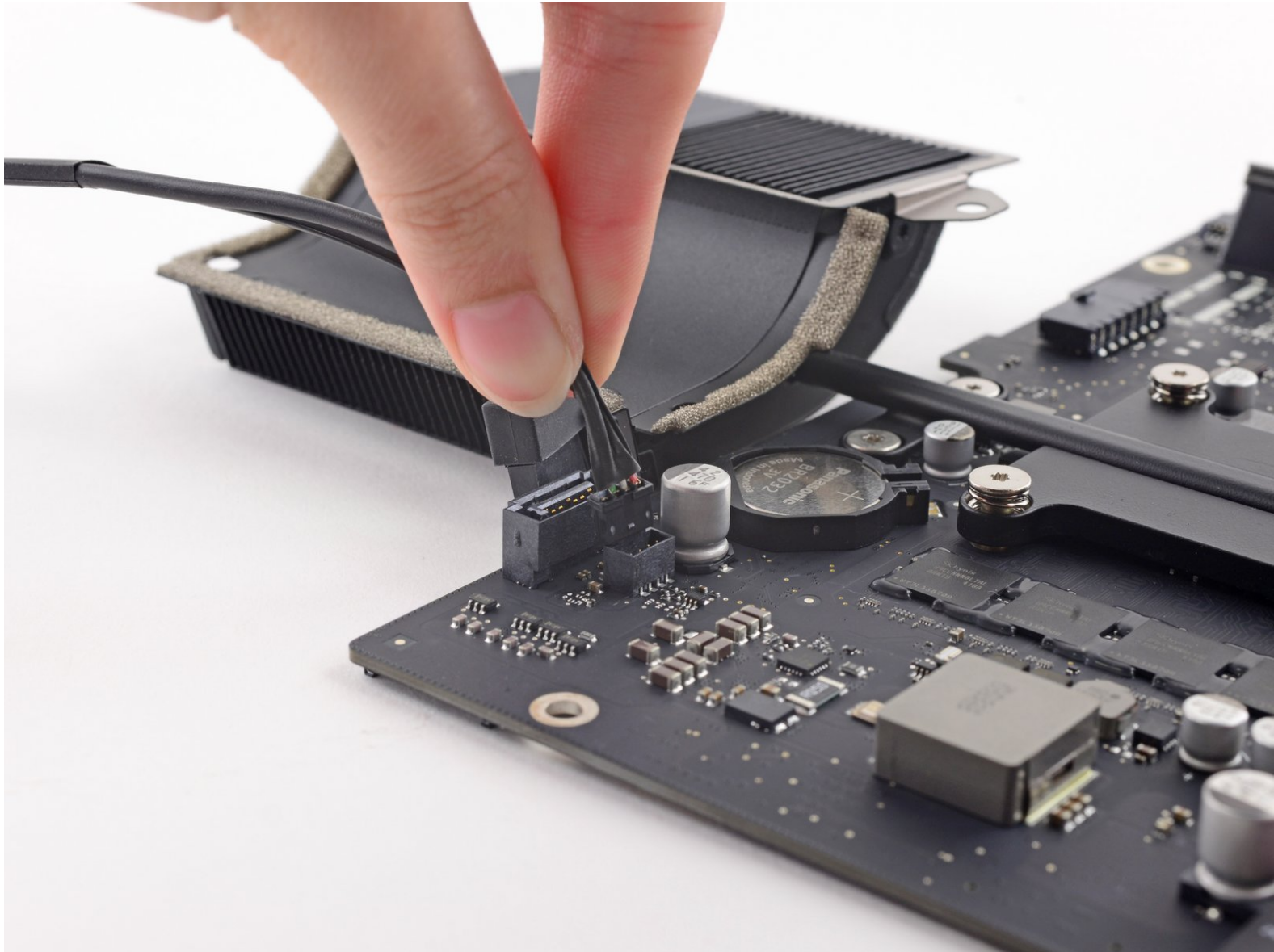




# iMac Intel 21.5" EMC 2805 SATA Data and Power Cables Replacement

Prereq for logic board.

Written By: Walter Galan

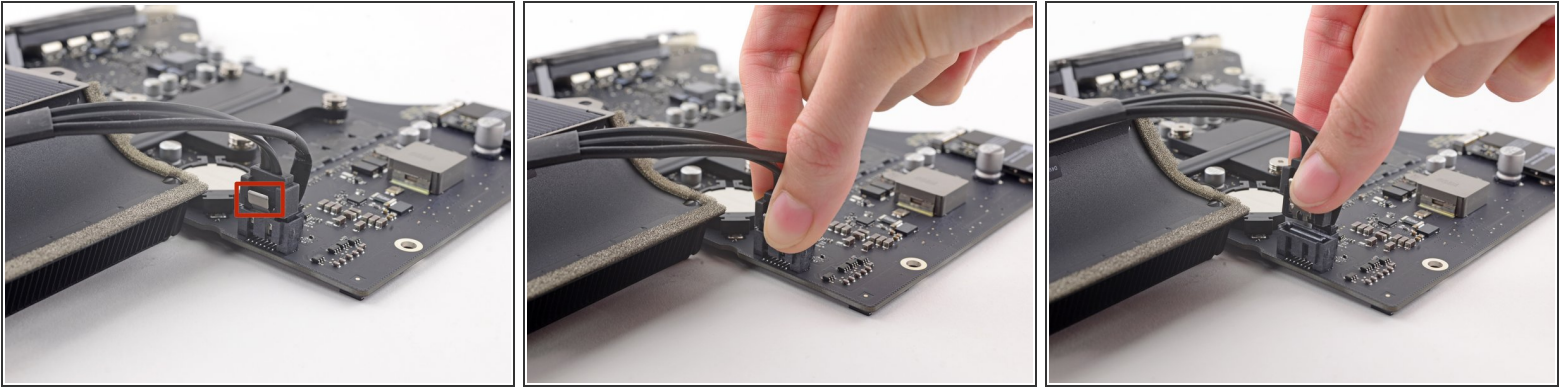


---

## **INTRODUCTION**

Prereq for logic board.

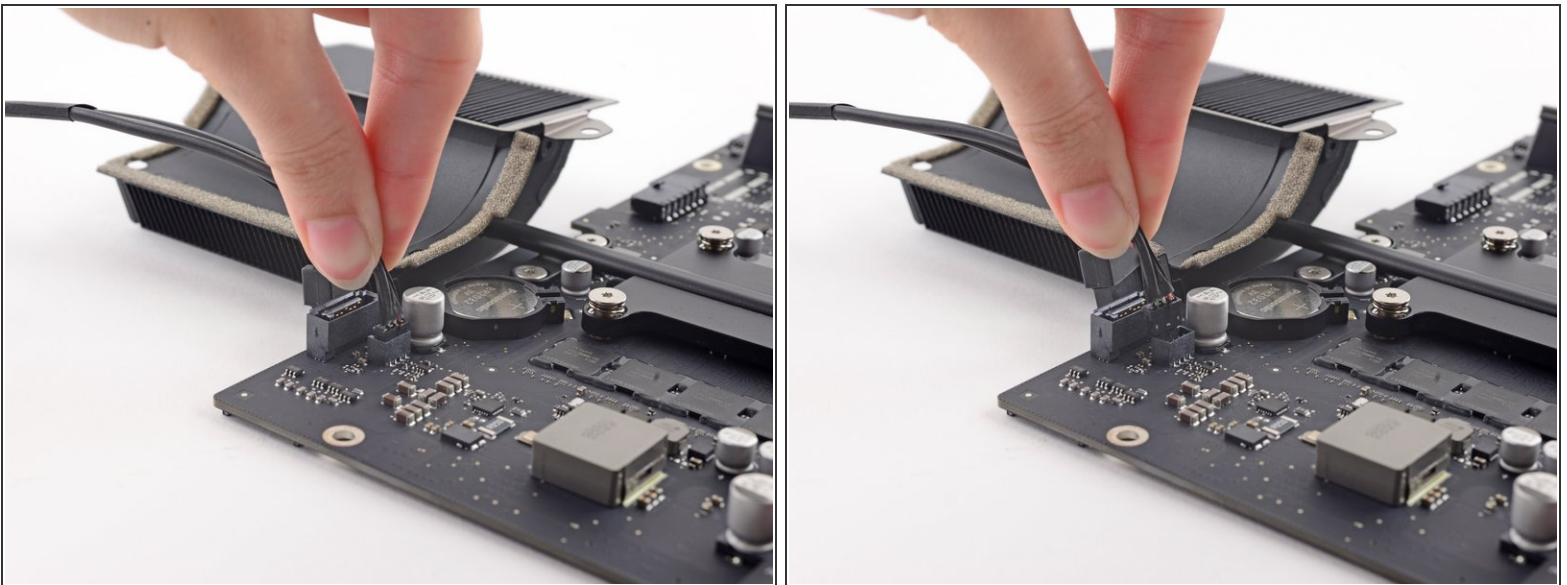
## Step 1 — SATA Data and Power Cables



**i** The SATA data connector has a clip that must be pressed to allow removal.

- While pressing on the clip with your thumb, lift and disconnect the SATA data connector from its socket on the logic board.

## Step 2



- Grasp the hard drive power connector and gently pull it out of its socket on the logic board.

To reassemble your device, follow these instructions in reverse order.