



Sony Ericsson T68i Keypad Replacement

Written By: Tim Dascomb



INTRODUCTION

This guide will help you to remove the keypad from your Sony Ericsson T68i.

TOOLS:

- [T6 Torx Screwdriver](#) (1)
 - [iFixit Opening Tools](#) (1)
-

Step 1 — Keypad



- Remove the battery from the back.

Step 2



- Pry off the plastic cover from the top with a thin plastic shim, then remove it from the two bottom clips.

⚠ Do not bend it too far down, or else you risk breaking the two bottom clips.

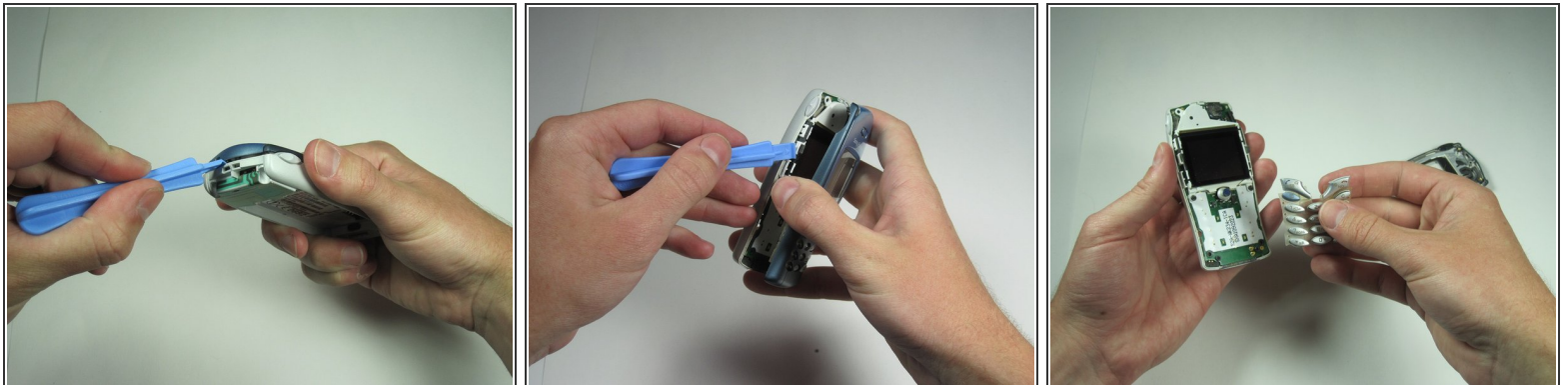
Step 3



- Unscrew all four Torx T6 screws.

i Keep in a safe place.

Step 4



- After removing the screws, the two halves will separate. If not, then pry them gently apart.

To reassemble your device, follow these instructions in reverse order.