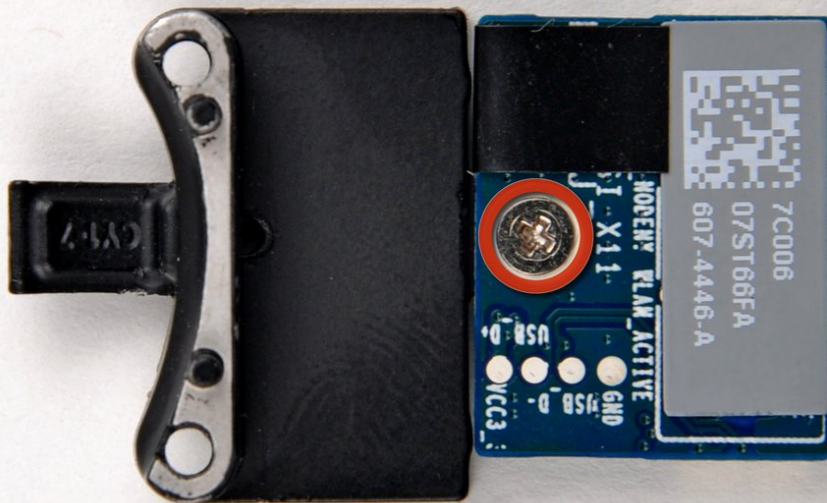




# MacBook Pro 15" Unibody 2.53 GHz Mid 2009 Bluetooth Board Replacement

Replace the Bluetooth board.

Written By: Walter Galan



## INTRODUCTION

Use this guide to replace a non-functioning Bluetooth board in the Anti-Glare option of the Mid 2009 MacBook Pro.

The Glossy display option does not have this display-mounted bluetooth card, it is found [under the clutch cover](#).

### TOOLS:

- Phillips #00 Screwdriver (1)
- Spudger (1)

### PARTS:

- MacBook Pro 15" Unibody (Mid 2009) Bluetooth Board (1)

## Step 1 — Lower Case



- Remove the following ten screws securing the lower case to the upper case:
  - Seven 3 mm Phillips screws.
  - Three 13.5 mm Phillips screws.

## Step 2



- Using both hands, lift the lower case near the vent to pop it off two clips securing it to the upper case.
- Remove the lower case and set it aside.

### Step 3 — (Anti-Glare Option) Bluetooth Board



- Disconnect the Bluetooth cable by pulling the male end straight away from its socket.
- ⚠ Pull the connector parallel to the face of the logic board, not straight up.
- Use the flat end of a spudger to pry the Bluetooth antenna cable from its socket on the board.

## Step 4



- Remove the two 8 mm Phillips screws securing the Bluetooth/camera cable retainer to the upper case.
- ⓘ One of the screws may remain captive in the Bluetooth/camera cable ground loop. If replacing the display, be sure to transfer this screw to the new unit.
- Lift the Bluetooth board/cable retainer assembly out of the upper case.

## Step 5 — (Anti-Glare Option) Bluetooth Board



- Remove the single Phillips screw securing the Bluetooth board to the retainer.
- Lift the Bluetooth board off the retainer.

To reassemble your device, follow these instructions in reverse order.

This document was last generated on 2019-07-11 03:16:16 AM.