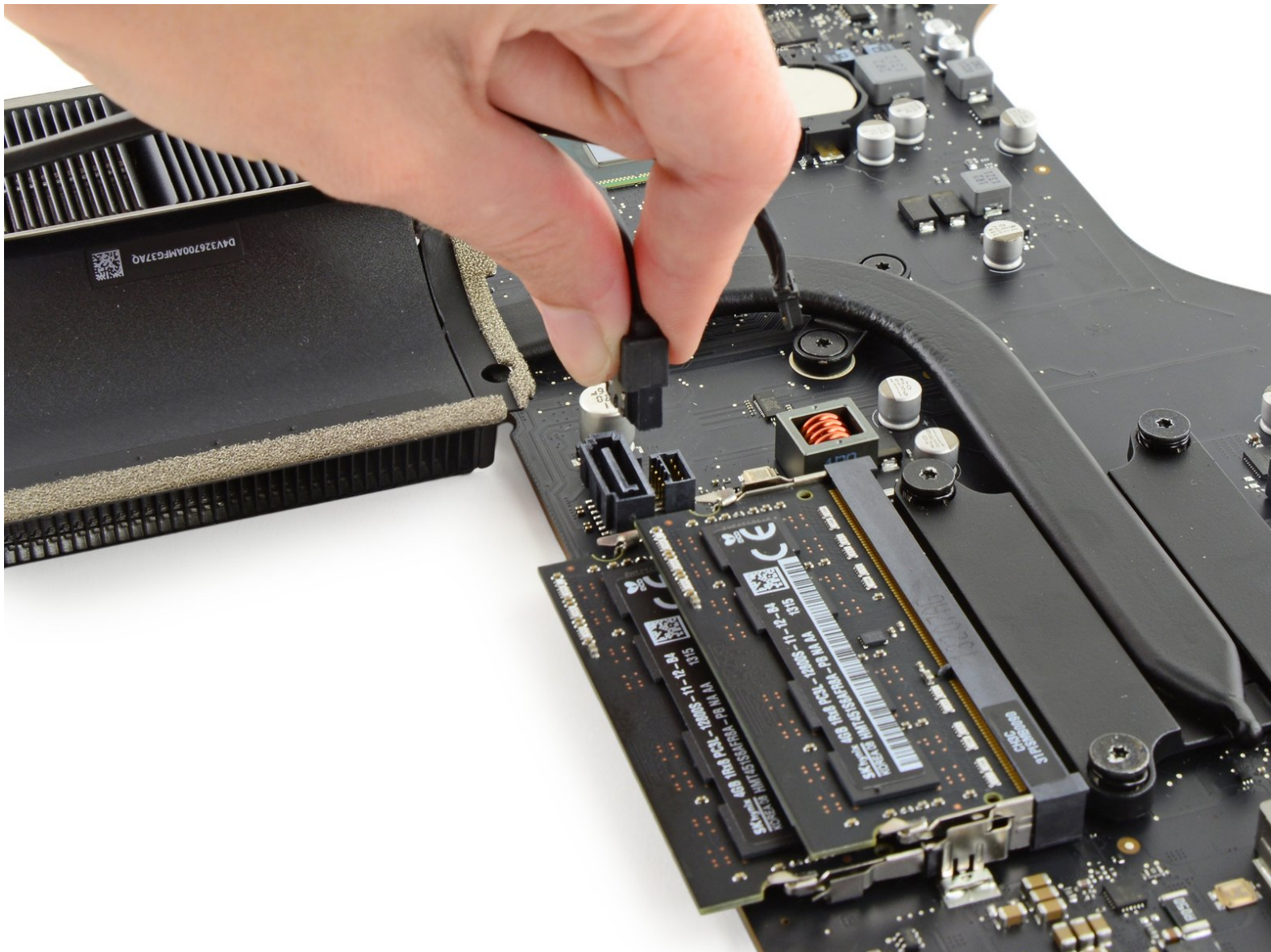




# iMac Intel 21.5" EMC 2638 SATA Data and Power Cables Replacement

Prereq only.

Written By: Sam Goldheart

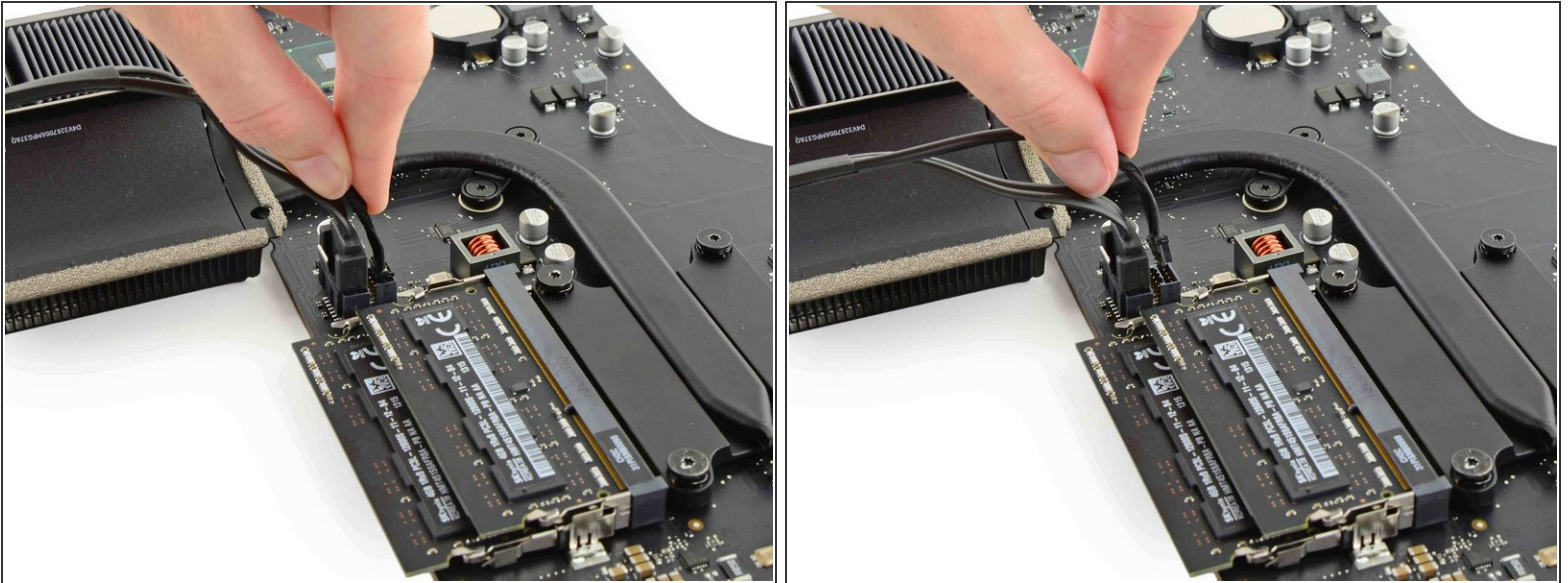


---

# INTRODUCTION

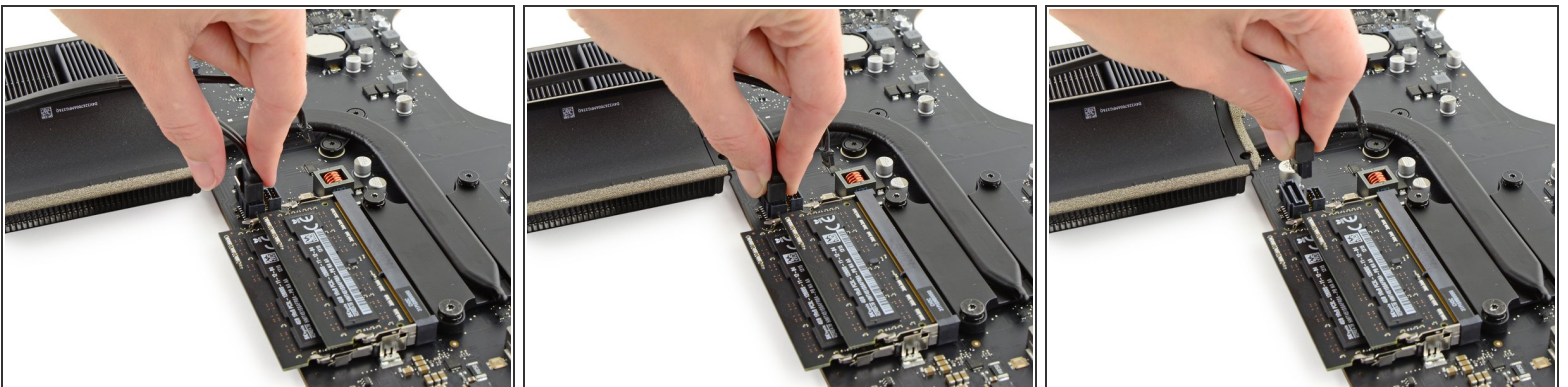
Prereq only.

## Step 1 — SATA Data and Power Cables



- Grasp the hard drive power connector and gently pull it out of its socket on the logic board.

## Step 2



- ⓘ The SATA data connector has a clip that must be pressed to allow removal.
- While pressing on the clip with your thumb, lift and disconnect the SATA data connector from its socket on the logic board.

To reassemble your device, follow these instructions in reverse order.