



HTC Magic SIM Card Replacement

This quick guide shows you how to place/remove a simcard in an HTC Magic.

Written By: LucasJV

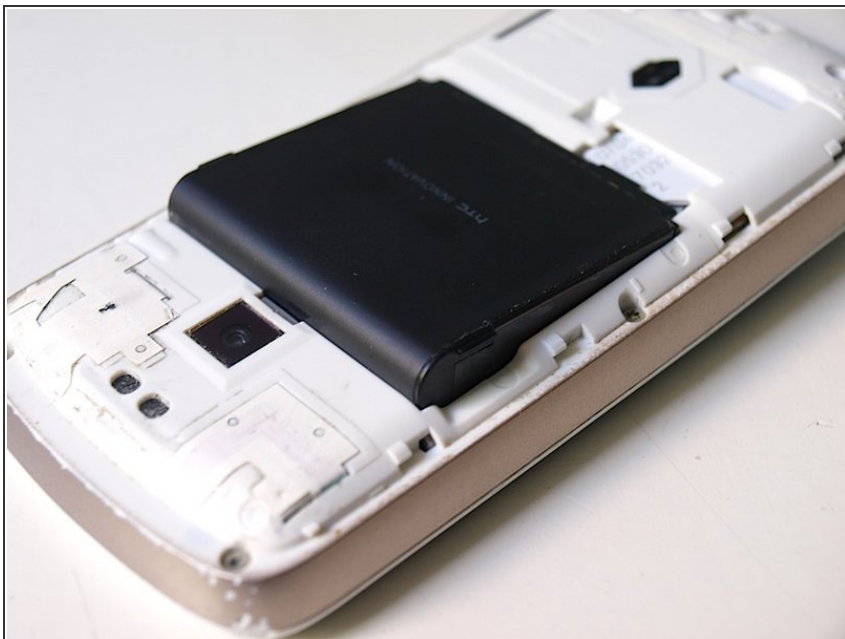


Step 1 — SIM Card



- Push down firmly on the back cover of the phone and pull it back.
- It will only slide back about half an inch, after that you can lift it up.

Step 2



- Take out the battery using the two tabs at the upper right and upper left corner of the battery.

Step 3



- Take out the simcard by putting your finger on the revealing bit of the card and pulling it out towards you.
- If it doesn't work immediately, try using the small open space near the bottom of the simcard to partially push it forward.

To reassemble your device, follow these instructions in reverse order.