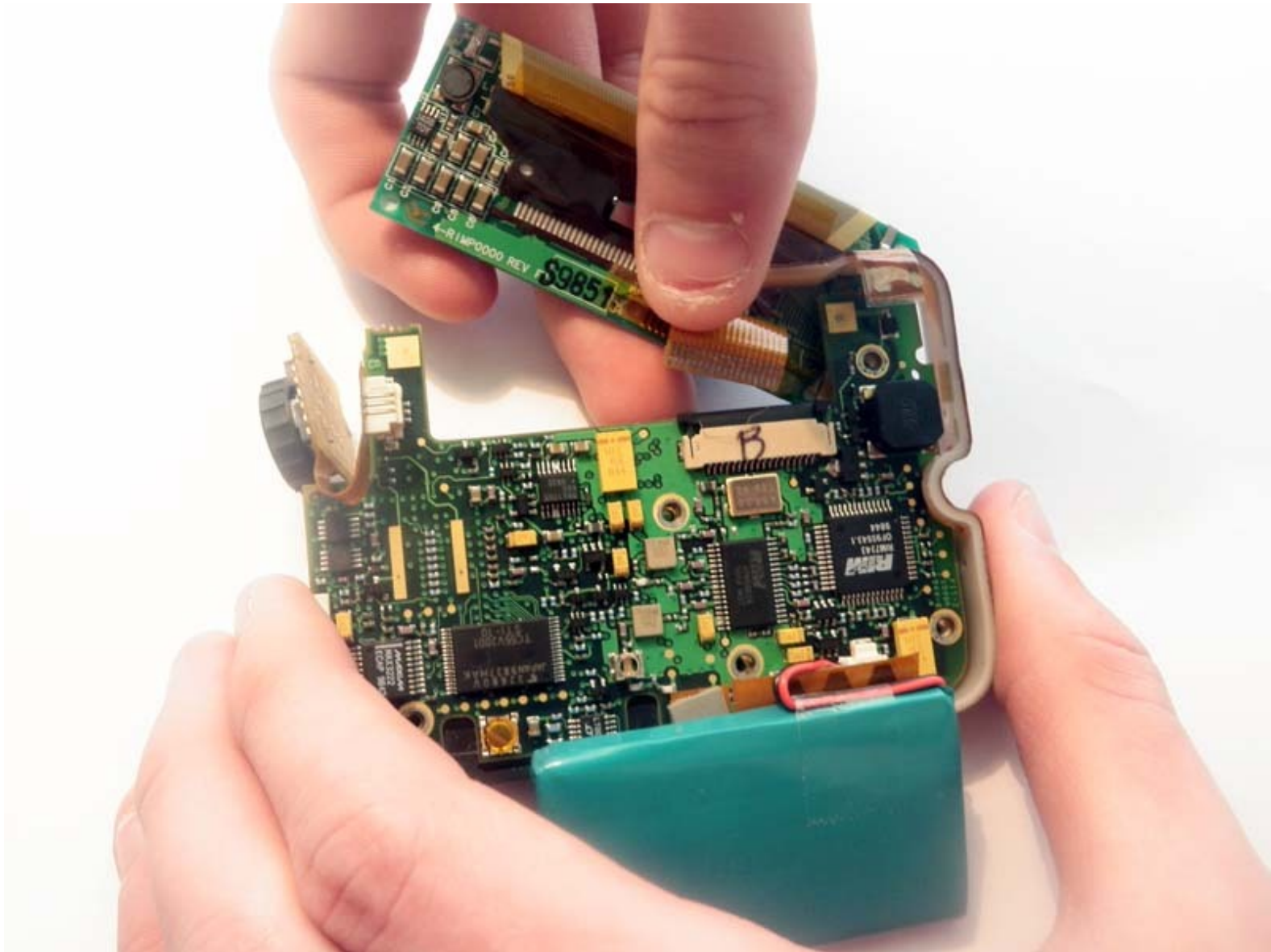




# BlackBerry R900M Display Replacement

Written By: Steven Jackowski



## INTRODUCTION

To replace a damaged or malfunctioning screen, use this guide.

---

### TOOLS:

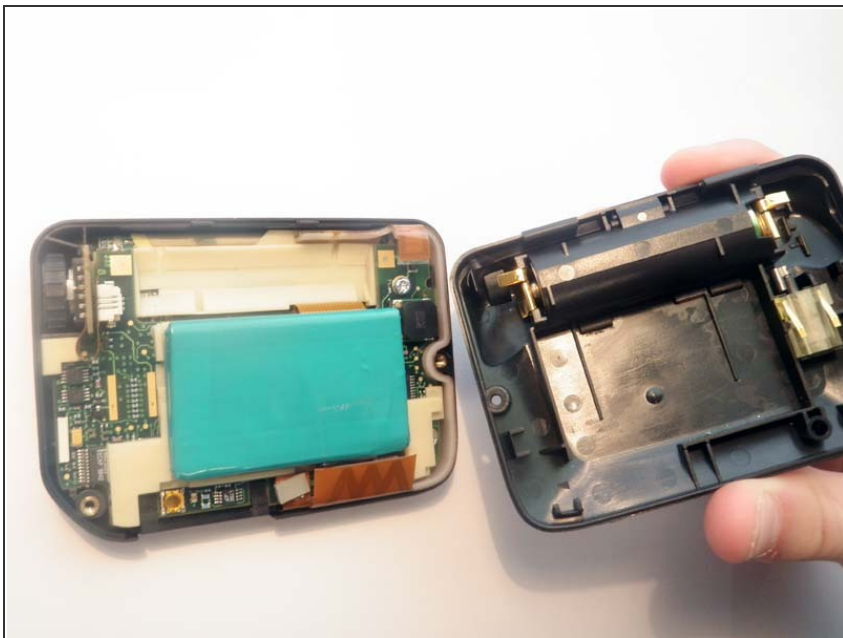
- [T9 Torx Screwdriver](#) (1)
-

## Step 1 — Case Disassembly



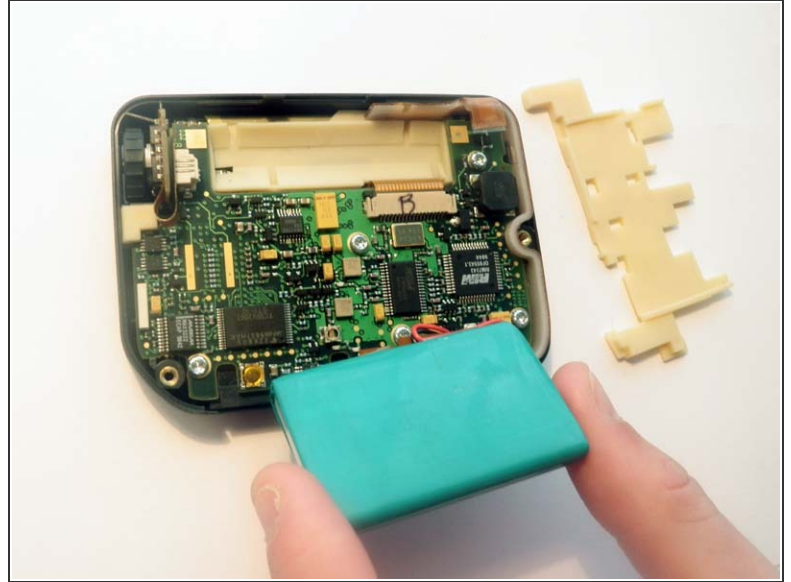
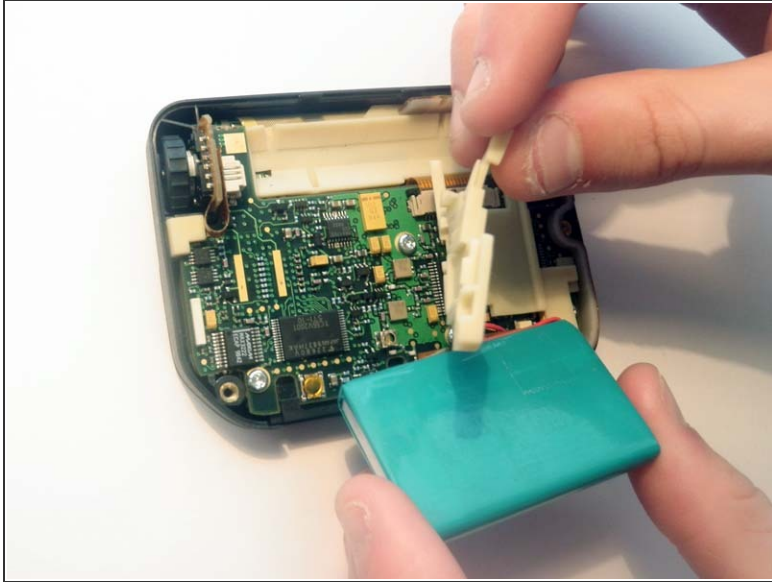
- Use a T9 Screwdriver to unscrew the two screws on the backside of the BlackBerry, one on the bottom left and one on the top right.

## Step 2



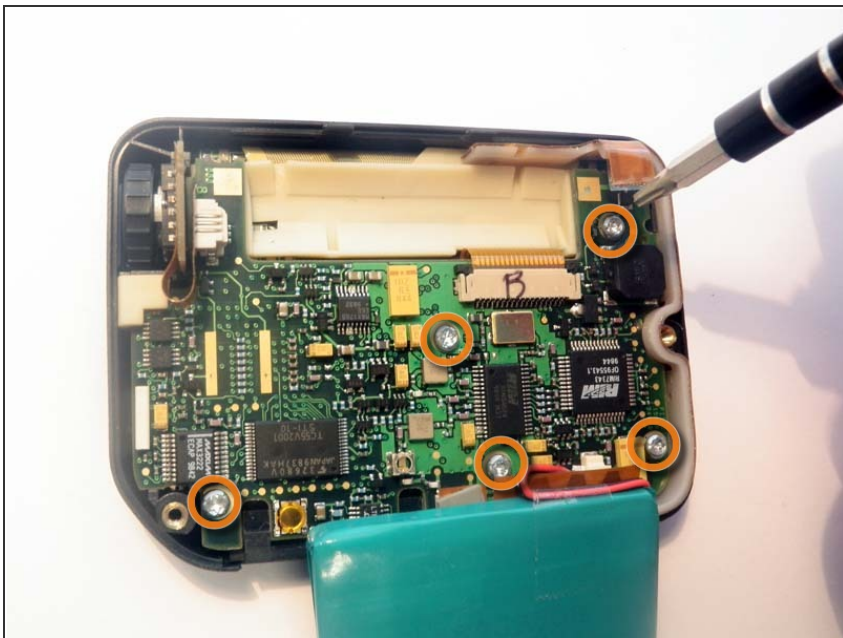
- Remove the backside of the device and set aside for later use.

### Step 3



- Remove the rubber placement pad that sits under the battery and set aside for later use. Gently fold back the battery, making sure the small plug connecting the battery to the logic board remains intact. Extra care should be taken as this part is quite delicate and easy to damage.

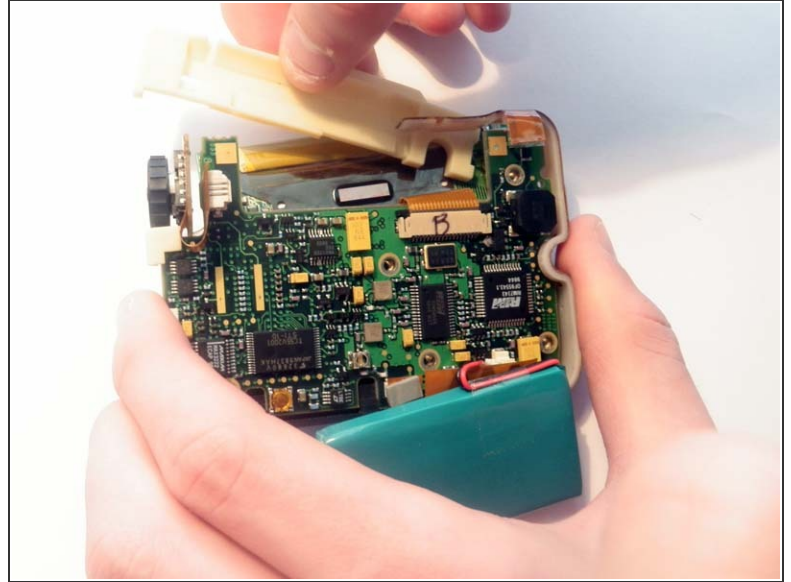
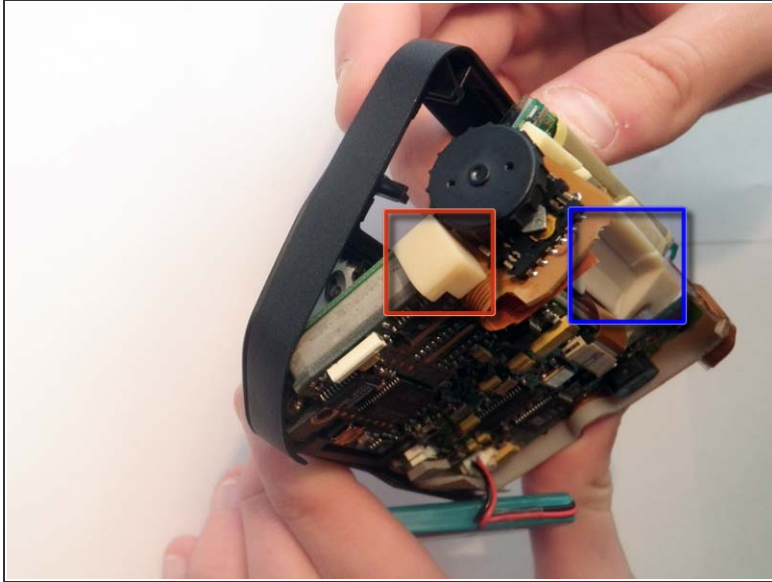
### Step 4



- Use the T9 Screwdriver to remove the five visible screws: Top right, bottom right, middle center, bottom center, bottom left.

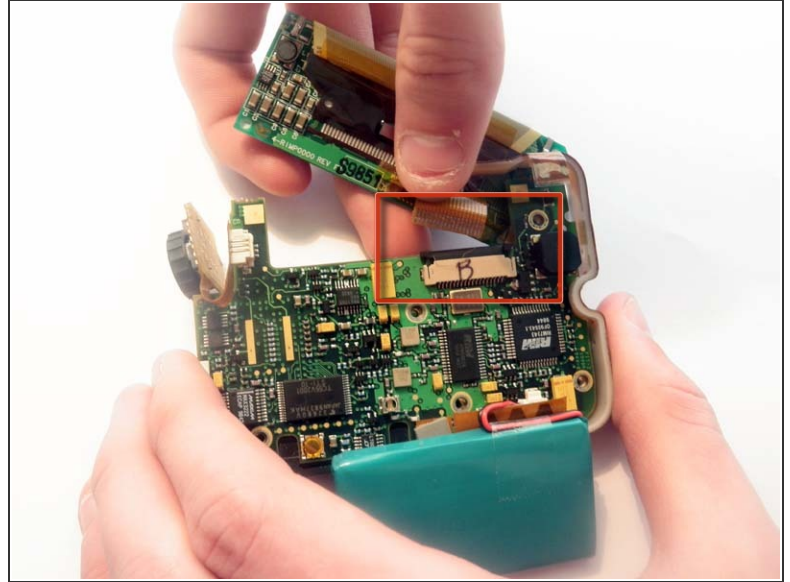
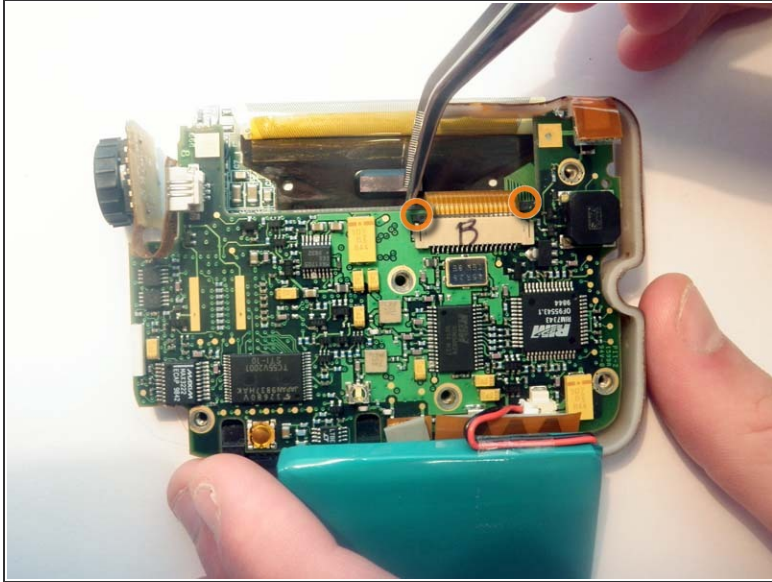


## Step 5



- Carefully remove the board from the device by gently pushing on the screen from the front side. The battery, screen, and scroll wheel are all connected to the logic board. Be sure to support these components so they do not break.
- Note the placement of two additional rubber pieces that cling loosely to the logic board. It is okay to let these pieces fall loose.
  - One is located below the scrollwheel.
  - Another is located behind the screen.

## Step 6 — Display



- Pull out the two black clips securing the screen's ribbon so that they are as far out as they will go.
- Gently remove the screen's ribbon from the slot. Be sure to support the screen and any connected parts.

To reassemble your device, follow these instructions in reverse order.

This document was last generated on 2017-06-17 09:06:29 PM.