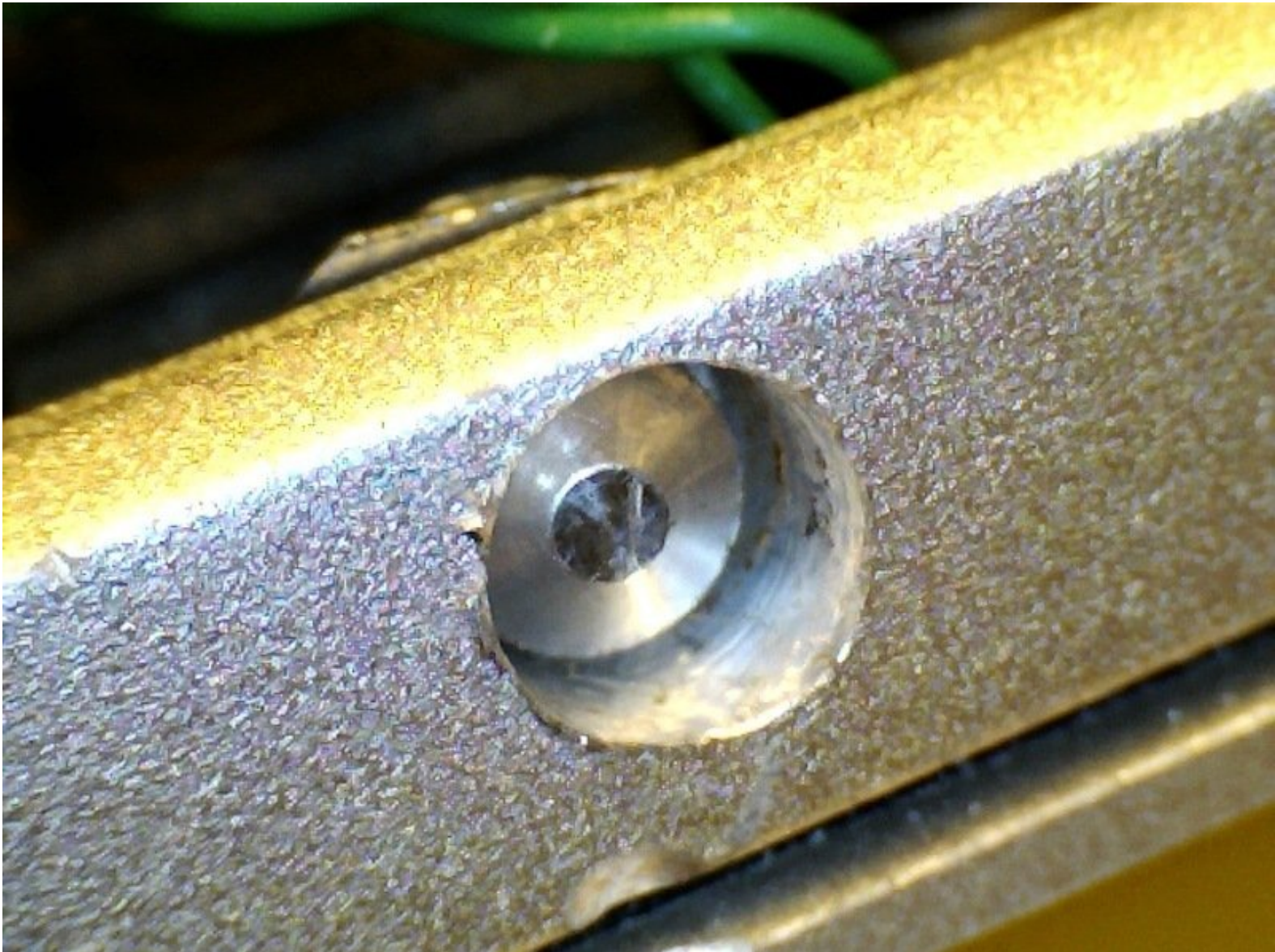




Repairing MacBook Air 2011 A1370 On/Off switch

Add a dedicated On/Off switch on right side of bottom case.

Written By: gege2005



INTRODUCTION

MacBook Air didn't start up, probably due to some liquid spilled on the keyboard above on/off key.

The pushed key exhibit an on resistance $> 70k\Omega$ s. I decided to use the on/off pads on motherboard to add a dedicated push-button.

1. Got a small aluminum piece from a used Mac battery A1175
2. Grind both upper and lower side off the piece so it fit just against the right wall off MacBook
3. Drilled $\varnothing 4$ mm (better measure your own piece) and glued with cyanoacrylate the very far of the small metal tab.
4. Get a push-button small enough to fit below the mother board (beware of a thick piece (maybe transformer)) that can avoid placing your switch. My switch come from www.conrad.fr with ref n° 705325 (perfect fit at the chosen place)
5. Solder two thin wire ~ 4 cm very close to the switch body, routing them so they don't touch the motherboard.
6. Test the on/off with ohmmeter, adjust the hole eventually the alu piece move well.
7. Glue the switch behind the alu piece on the top case of MacBook (used a small drop of silicon Bostik MS117) 8- Wait few hours until the glue is completely solid (better than having to undo all the work)
8. Cut the two wires 1cm longer than the distance to the on/off pad.
9. Solder the wires on each on/off pad.

Good Luck!



TOOLS:

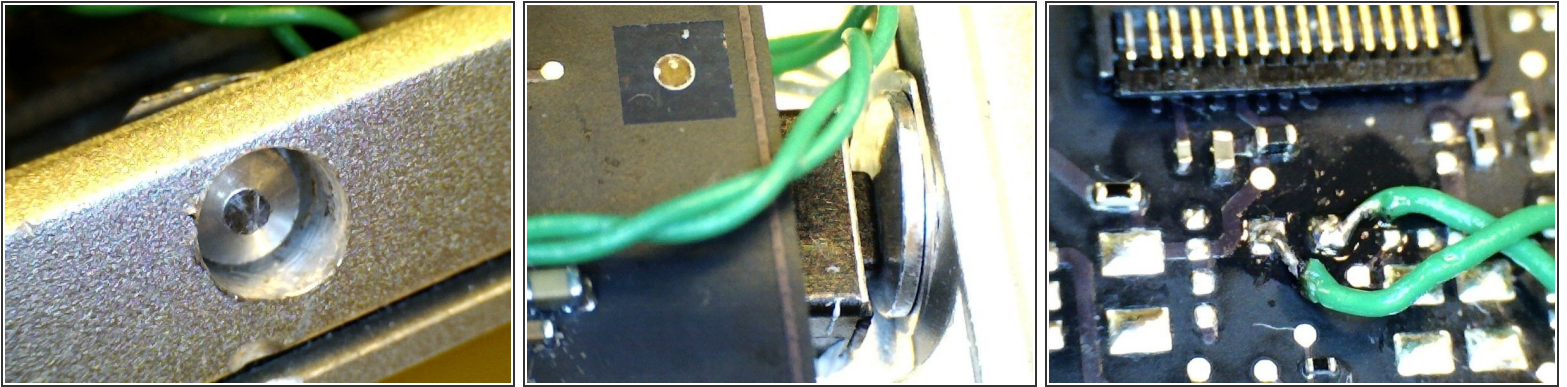
- [driller, solder iron](#) (1)



PARTS:

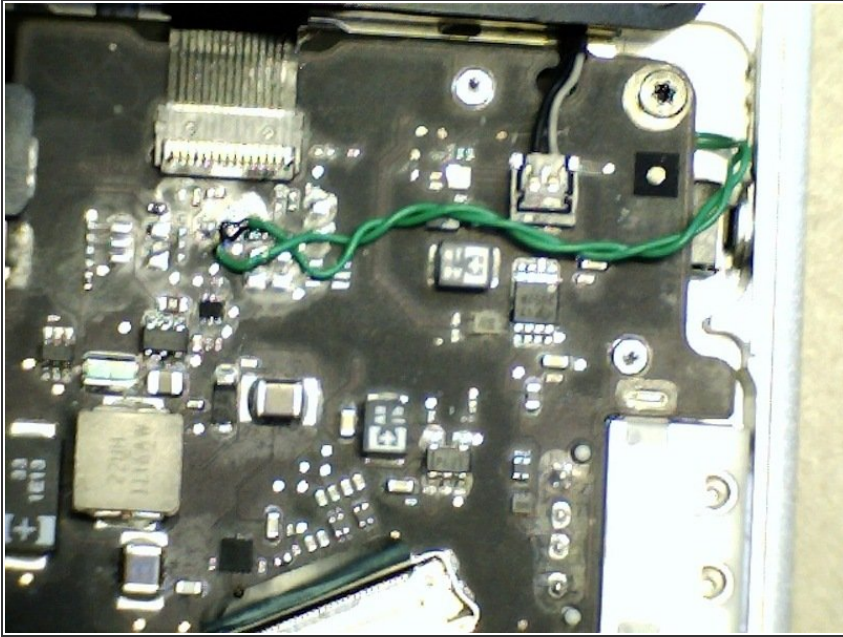
- [Namee switch 705325 \(Conrad.fr\)](#) (1)

Step 1 — Repairing MacBook Air 2011 A1370 On/Off switch



- Got a small aluminum piece from a used Mac battery A1175
- Grind both upper and lower side off the piece so it fit just against the right wall off MacBook
- Drilled \varnothing 4 mm (better measure your own piece) and glued with cyanoacrylate the very far of the small metal tab.
- Get a push-button small enough to fit below the mother board (beware of a thick piece (maybe transformer)) that can avoid placing your switch. My switch come from www.conrad.fr with ref n° 705325 (perfect fit at the chosen place)
- Solder two thin wire ~ 4cm very close to the switch body, routing them so they don't touch the motherboard.

Step 2



- Test the on/off with ohmmeter, adjust the hole eventually the alu piece move well.

To reassemble your device, follow these instructions in reverse order.