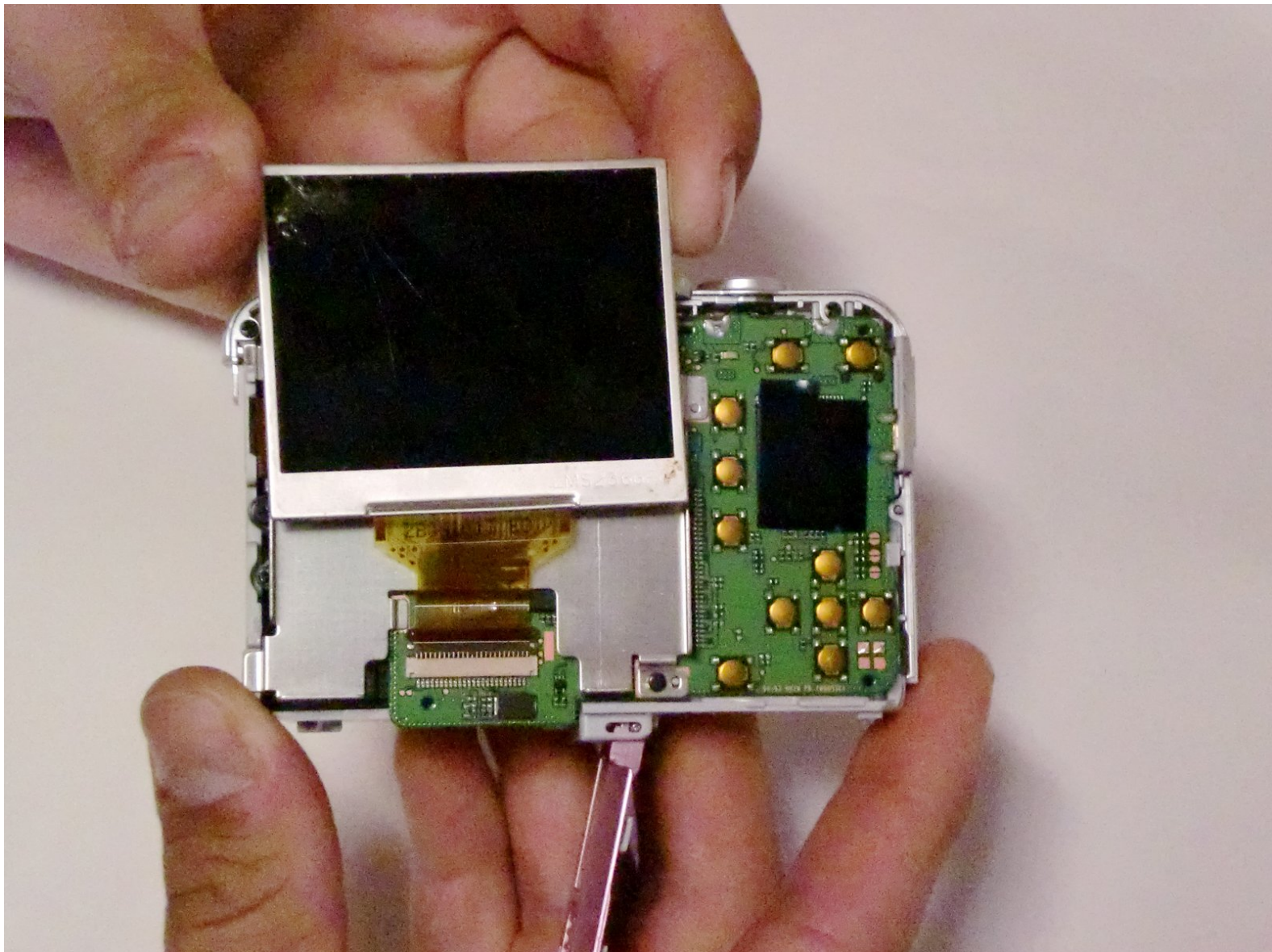




Samsung S860 LCD Screen Replacement

This guide will focus on replacing a cracked or broken LCD screen.

Written By: Kando Ogunrinola



INTRODUCTION

You will take the camera apart in order to replace the damaged LCD screen and restore functionality.

TOOLS:

- [Phillips #00 Screwdriver](#) (1)
-

Step 1 — LCD Screen



- Remove all screws along the edges of the camera, using a #00 Phillips screwdriver.

Step 2



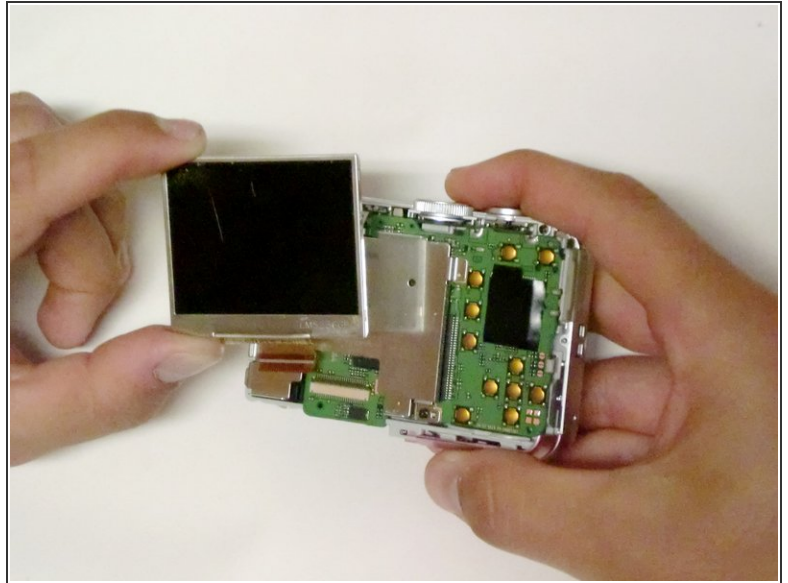
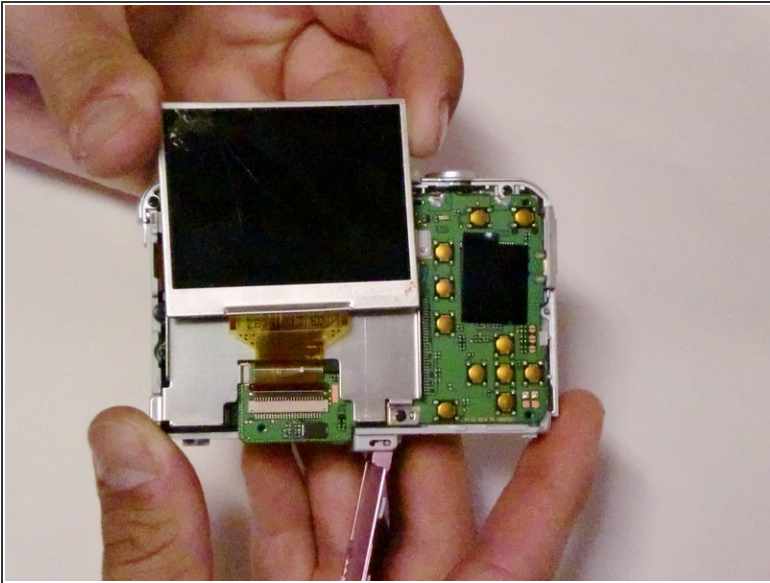
- Slide open the battery compartment cover before removing the exterior covers of the camera.

Step 3



- Carefully pull the back case (the side showing the LCD screen) away from the front half.
- There are clips securing the top of the back case. Do not be afraid to use the proper amount of force to remove the back case.
- Turn the camera around to the front (the lens side). Carefully remove the front case.
- There are also clips on the lens' side as well, so do not be afraid to use force.

Step 4



- Position the camera so the LCD screen is facing you.
- Remove the LCD screen from the screen plate.
- Replace the broken LCD screen with the functioning LCD screen.

To reassemble your device, follow these instructions in reverse order.

This document was last generated on 2019-07-23 07:21:42 AM.