



# IBM ThinkPad T42 Hard Drive Replacement

This guide shows how to remove the harddrive

Written By: Austin Kidd



# INTRODUCTION

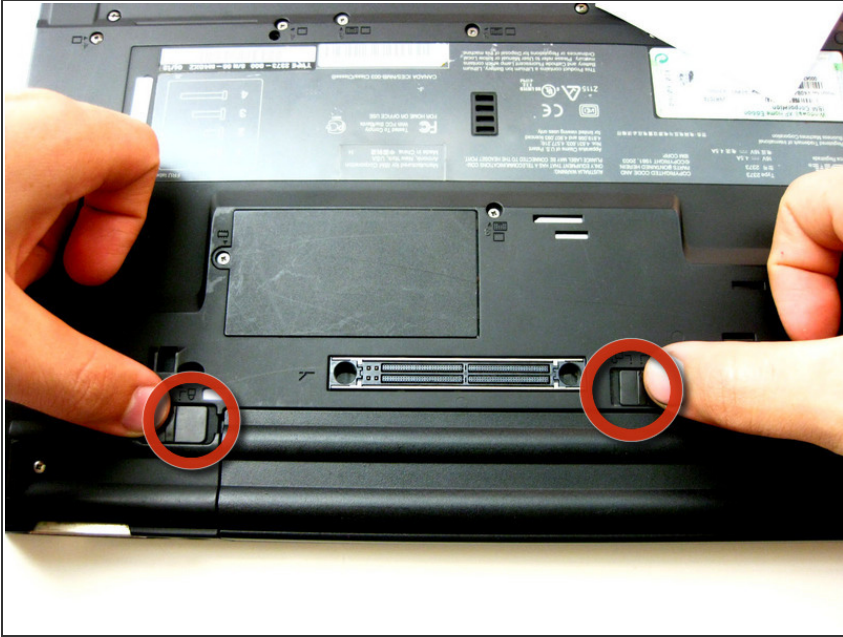
## Replacing the Hard Drive

---

### TOOLS:

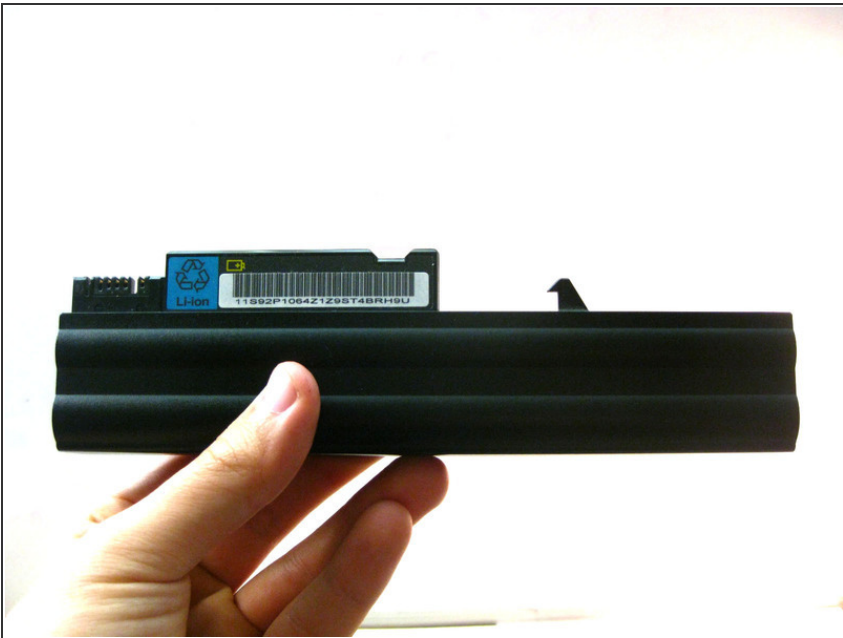
- [Phillips #0 Screwdriver](#) (1)
-

## Step 1 — Battery Clips



- Flip the laptop over so the underside is facing you, then, release the 2 clips holding the battery on.
- ⚠ Make sure the laptop is off when you do this, sudden power outages can cause data corruption.

## Step 2 — Removing the Battery



- Carefully grab the battery, then pull it straight out, not at an angle.

### Step 3 — Hard Drive Screw



- Unscrew the single screw holding the drive cage in place.

### Step 4 — Sliding Drive Out



- Pull the hard drive out with of its bay the help of pictured ridges. Carefully remove it.
- ⓘ It might help to open the display slightly.

## Step 5 — Removal of HDD



- Pull the Hard Drive out and proceed with replacement.

To reassemble your device, follow these instructions in reverse order.

This document was last generated on 2018-03-11 08:43:18 AM.