



MacBook Unibody Model A1342 LCD Replacement

Written By: Andrew Bookholt



INTRODUCTION

This guide is an internal prerequisite.

TOOLS:

- [Phillips #00 Screwdriver](#) (1)
 - [Spudger](#) (1)
-

Step 1 — LCD



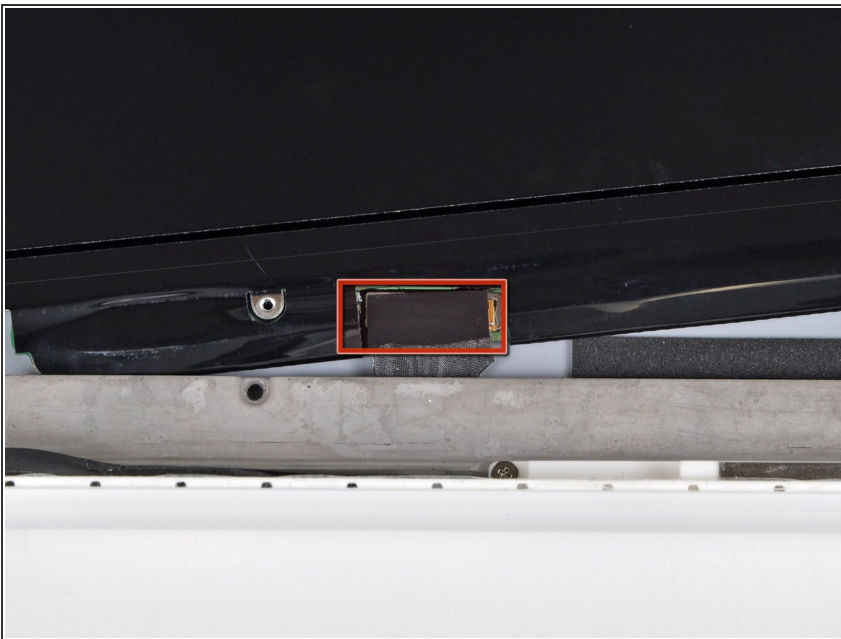
- Remove following six screws securing the LCD to the rear display bezel:
 - Four 3.4 mm Phillips.
 - Two 3 mm Phillips.

Step 2



- ⚠ Do not try to remove the LCD yet. The circuitry along its lower edge is wedged in a gap along the lower edge of the display recess in the plastic display assembly.
- Hold the display vertically and tip it enough to grab the top edge of the LCD and rotate it slightly out of the display assembly, being careful not to break the circuitry off its lower edge.

Step 3



- Peel the piece of tape covering the display data cable connector away from the edge closest to the LCD.

Step 4



- Use the tip of a spudger to flip up the thin steel retaining clip securing the display data cable to its socket on the LCD.
- Pull the display data cable straight away from its socket on the LCD.
- Lift the LCD out of the display assembly and set it aside.

To reassemble your device, follow these instructions in reverse order.