



iPhone 6 Plus Rear Facing Camera Replacement

Prereq only for logic board.

Written By: Walter Galan



INTRODUCTION

Prereq only for logic board.

TOOLS:

- [Tweezers](#) (1)
 - [Spudger](#) (1)
 - [Phillips #000 Screwdriver](#) (1)
-

Step 1 — Rear Facing Camera



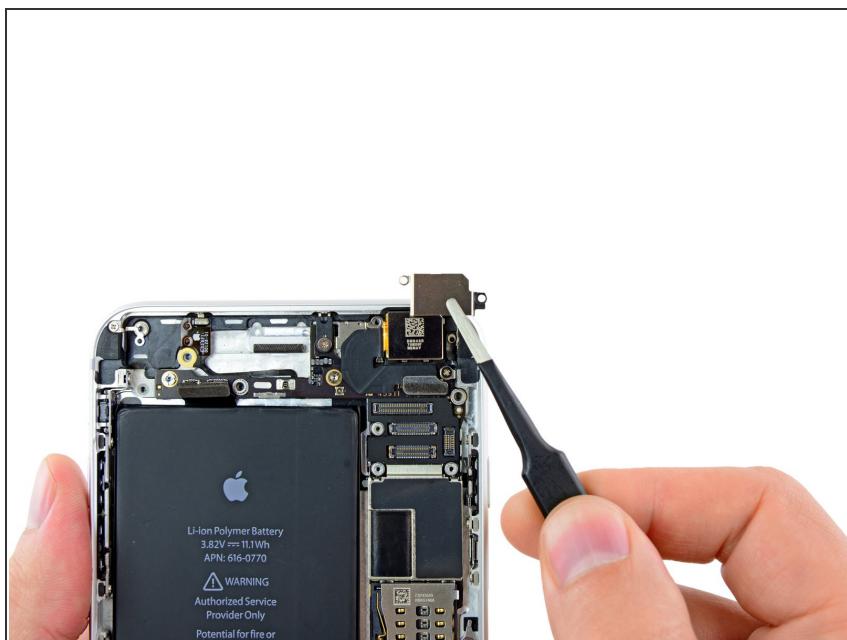
- Use a pair of tweezers to peel back the piece of tape covering the hidden screw securing the rear-facing camera bracket to the rear case.

Step 2



- Remove the following screws securing the rear-facing camera bracket to the rear case:
 - One 1.7 mm Phillips #00 screw
 - One 2.3 mm Phillips #00 screw

Step 3



- Lift and remove the rear-facing camera bracket off the rear-facing camera.

Step 4



- Use the flat end of a spudger to disconnect the rear-facing camera connector from its socket on the logic board.

Step 5



- Carefully lift and remove the rear-facing camera out of the iPhone.

To reassemble your device, follow these instructions in reverse order.