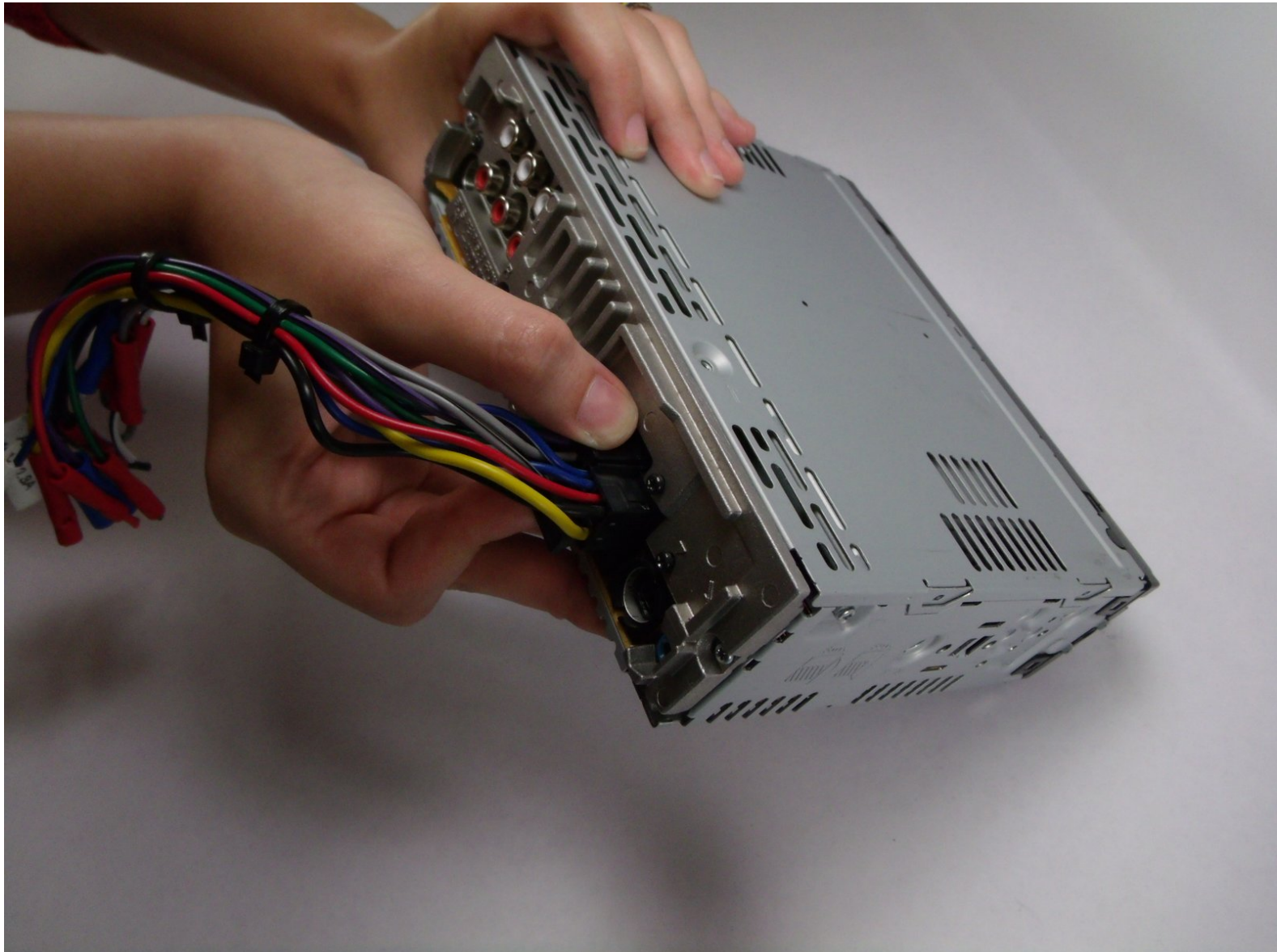




# Sony CDX-GT540UI Wiring Harness Replacement

Replace bad wiring to stop radio from glitching.

Written By: Odelkys Marquez



## INTRODUCTION

This is a guide to show how to remove and replace the wiring harness from the stereo. The wiring harness is how the device is connected to the vehicle deck.

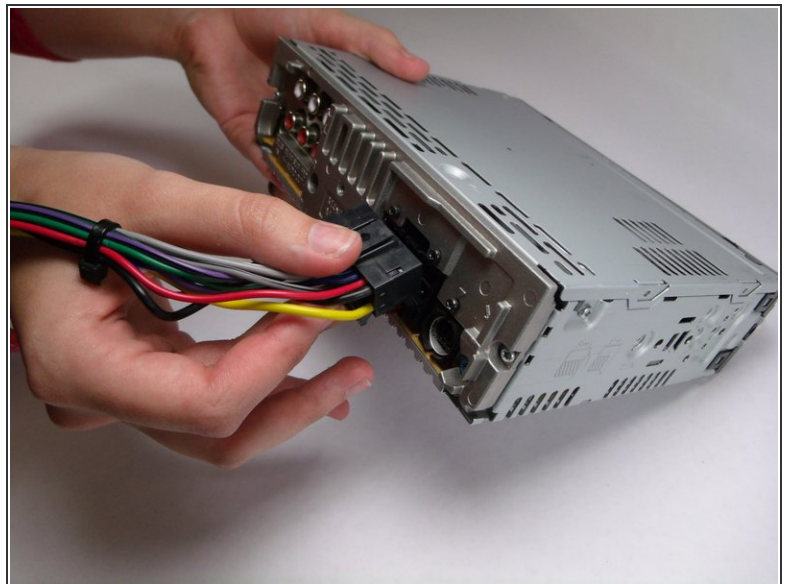
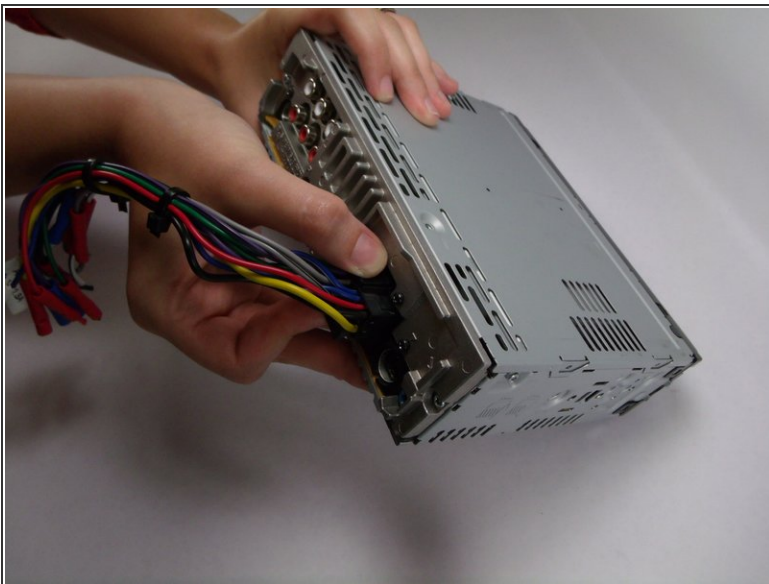
Before any repair work can be done one must remove the device for the vehicle. To do so follow this [link](#) to see a general vehicle removal of a stereo system.

## Step 1 — Wiring Harness



- Locate the clip on the wiring harness.

## Step 2



- Press down on the clip like you would an Ethernet cable.
- Rock harness side to side, pulling gently towards you until harness detaches.

To reassemble your device, follow these instructions in reverse order.