



Samsung Galaxy S4 Mini SD Card Replacement

This guide will show how to replace a faulty memory card.

Written By: Arletty



INTRODUCTION

If you're finding that you cannot install anything new or save any pictures it is most likely due to the fact that the memory card on the phone is full.



TOOLS:

- [iFixit Opening Tools](#) (1)



PARTS:

- [Memory Card](#) (1)

Step 1 — Battery



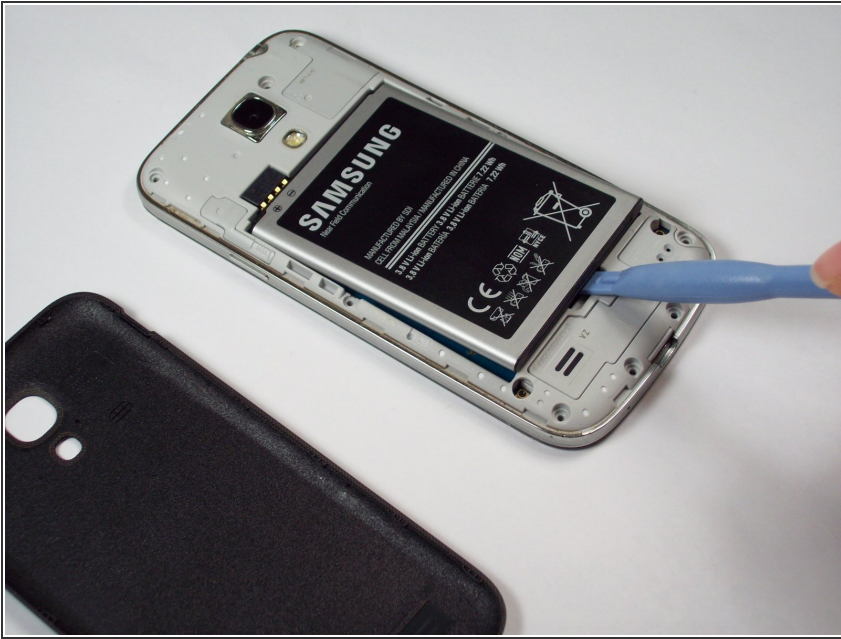
- Press and hold the END key to power the phone down.

Step 2



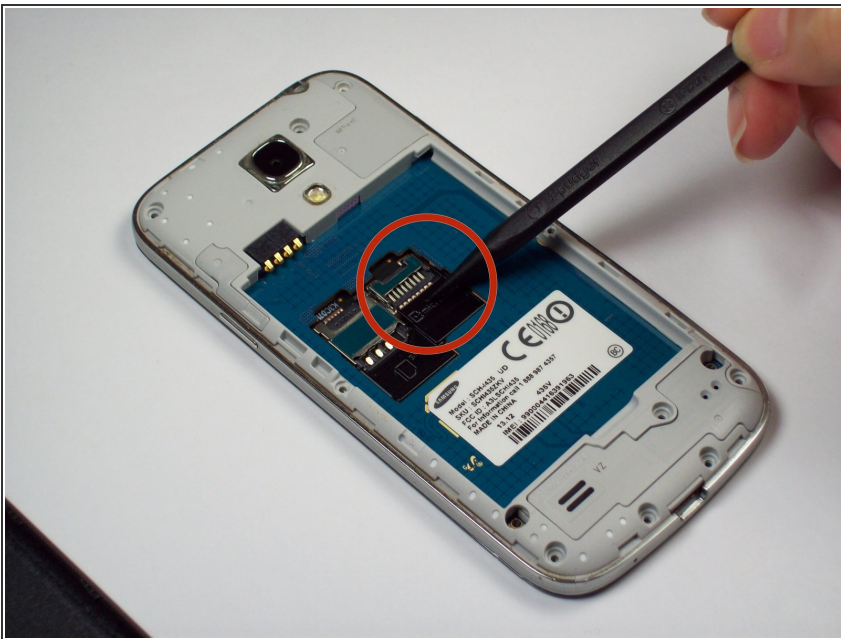
- Remove the back cover of the cell phone using a plastic opening tool.

Step 3



- Pry the battery out using a plastic opening tool.

Step 4 — SD Card



- Using a nylon spudger, push through the hole at the top of the memory card holder to slide it out.

To reassemble your device, follow these instructions in reverse order.

This document was last generated on 2019-08-08 01:07:55 PM.