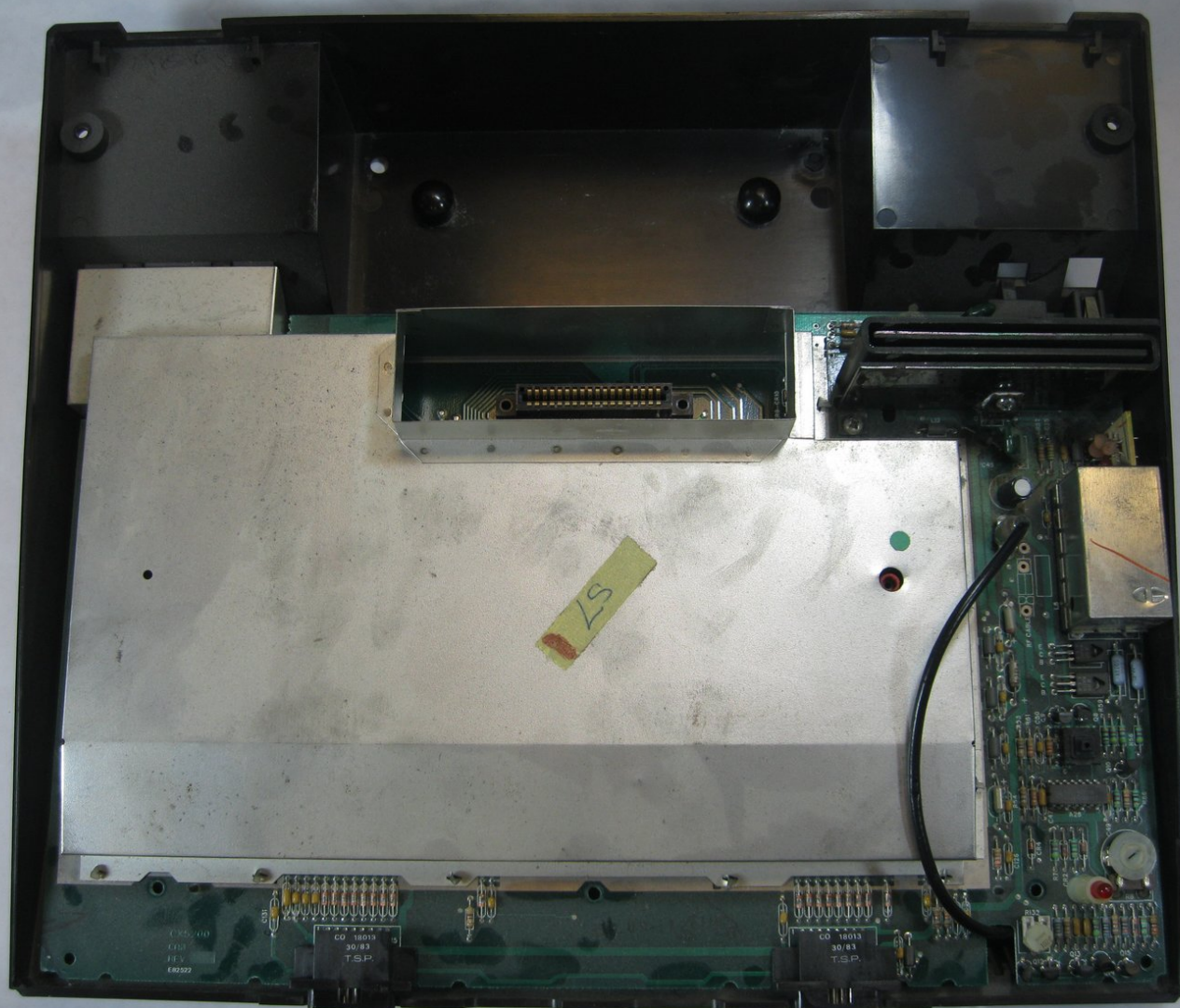




# Atari 5200 Disassembly

Troubleshooting and diagnosing common problems with the Atari 5200 motherboard.

Written By: Zach Petryszyn



# INTRODUCTION

Repairing the motherboard of the Atari 5200.



## TOOLS:

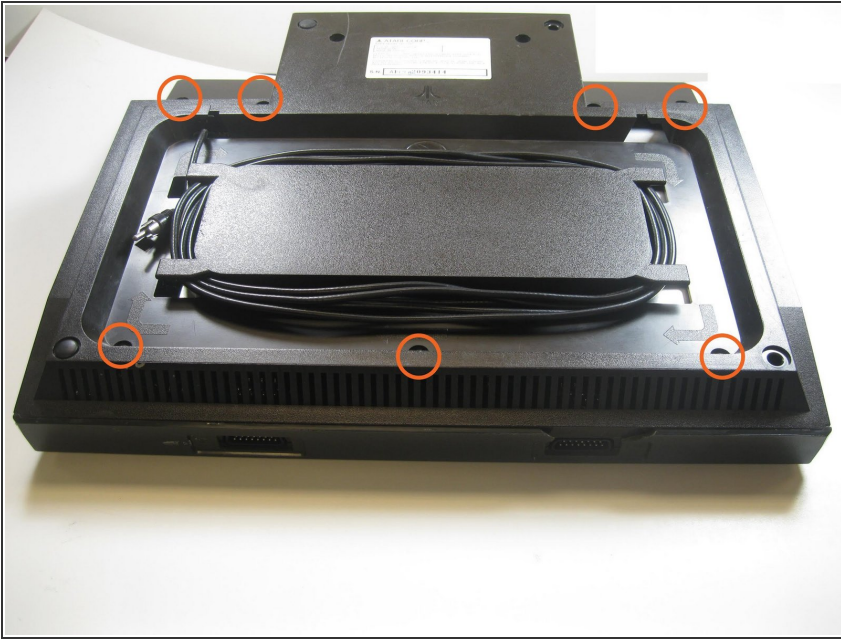
- [Phillips #0 Screwdriver](#) (1)



## PARTS:

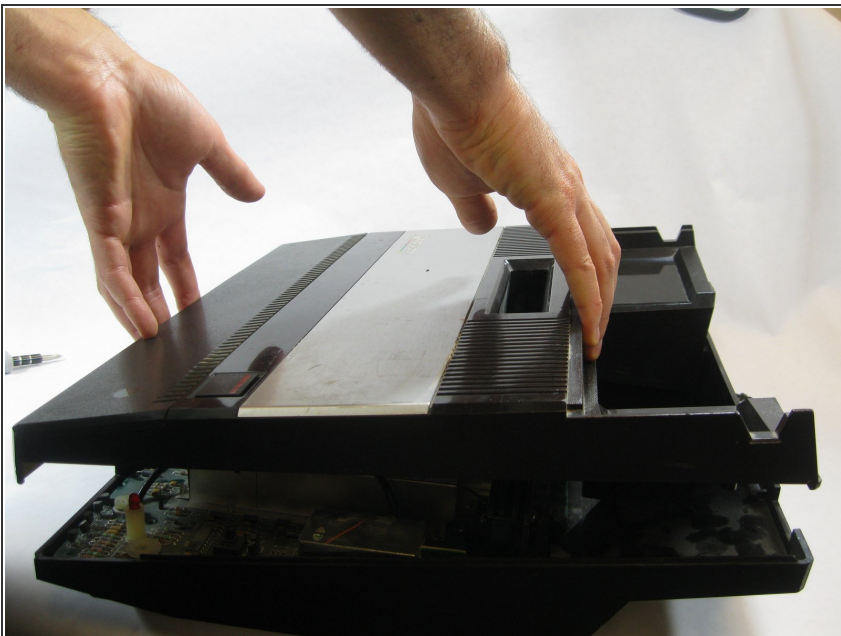
- [Compressed Air](#) (1)
- [Soft Cloth](#) (1)
- [High Content Rubbing Alcohol](#) (1)

## Step 1 — Atari 5200 Disassembly



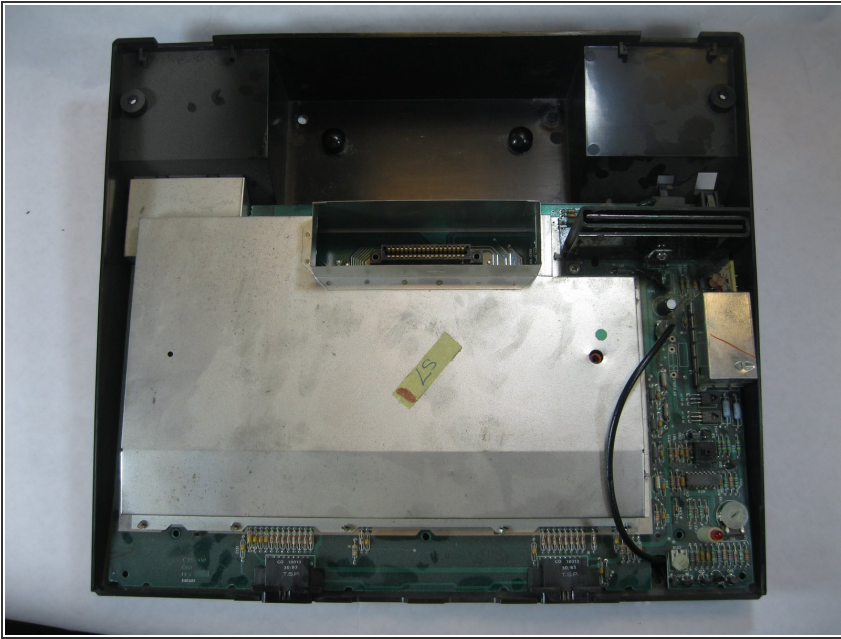
- Flip your Atari Entertainment System over to its top so you can see the bottom. You'll see seven screws holding your system together. Use a Philips #0 screwdriver to remove all seven screws.

## Step 2



- Flip the Atari Entertainment System back over so that you can now see the top.
- Use your hands to gently remove the top by sliding it off.

### Step 3 — Access: Granted



- You will now have access to the motherboard.
- ⓘ The motherboard can be cleaned with a moist paper towel.
- ⚠ Be sure the motherboard is fully dry before playing your Atari Entertainment System or you may damage it!

To reassemble your device, follow these instructions in reverse order.