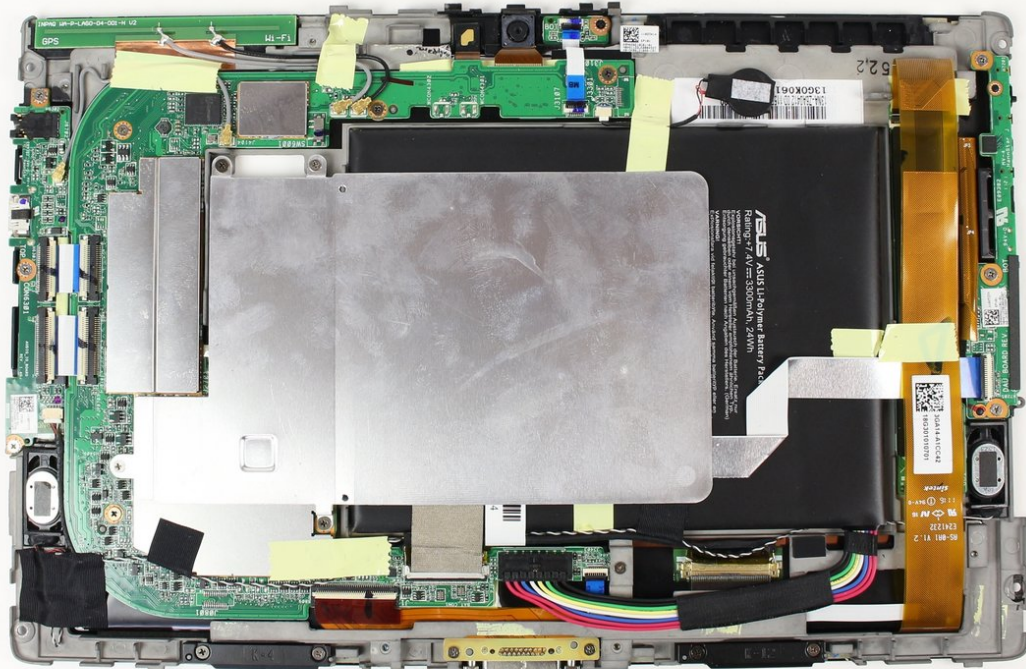




ASUS Eee Pad Transformer Buttons Replacement

Our guide on replacing the power and volume buttons of the ASUS transformer TF101 in just two steps.

Written By: Joe Payne



INTRODUCTION

Often times the buttons on a device wear out before all other components, buttons get the most use and wear down the fastest. Replacing the buttons can extend the lifetime of the device considerably.

TOOLS:

- [iFixit Opening Tools](#) (1)
- [T5 Torx Screwdriver](#) (1)
- [Phillips #00 Screwdriver](#) (1)

PARTS:

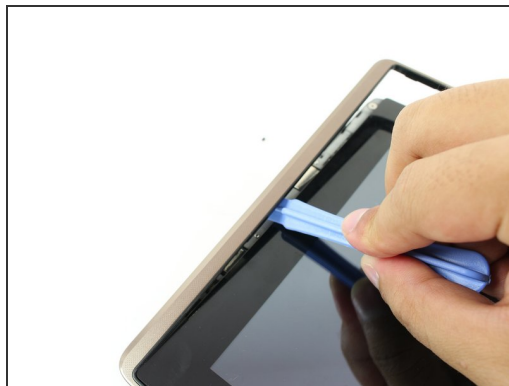
- [ASUS Eee Pad Transformer \(TF101\)](#)
[Volume Button Board](#) (1)
-

Step 1 — Removing Screws



- Use T5 Torx Screwdriver to remove two 4.5 millimeter T5 screws on either side of the port on the bottom of the tablet.

Step 2 — Removing outer metallic edge



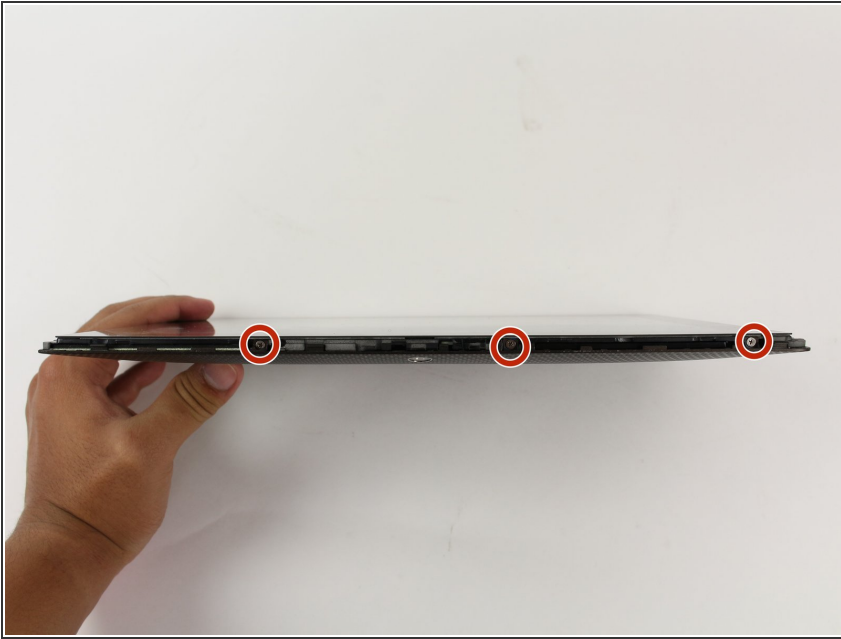
- Use the Plastic Opening Tool to pry between the main tablet body and the outer rim casing. Remove the outer rim casing by prying all the way around the device and pulling the rim upward.
- ⓘ The physical buttons are located on the outside of the rim on the right side, proceed with the guide to locate internal buttons.

Step 3 — Removing back panel screws



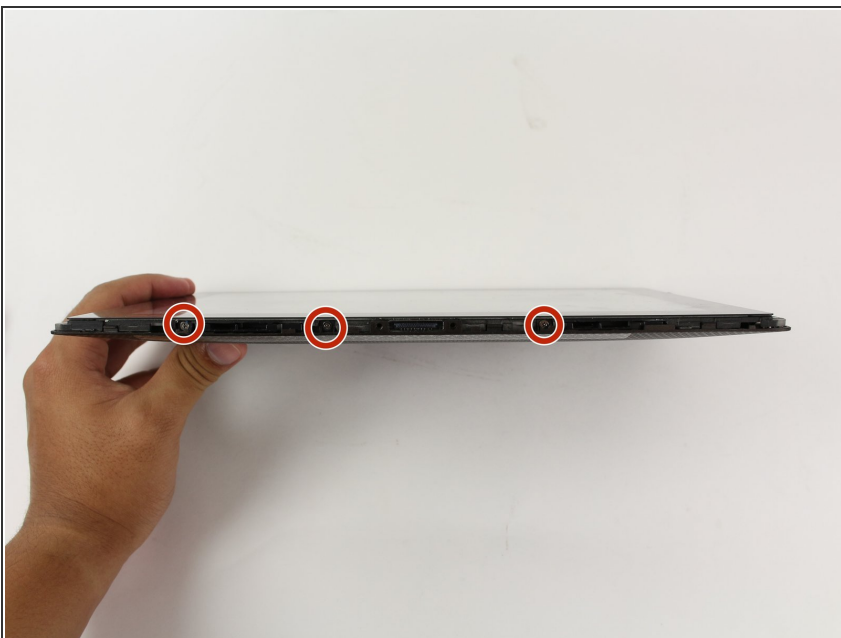
- Remove the four 2 millimeter Phillips #00 screws at the corners of the tablet.

Step 4



- Use a Phillips #00 Screwdriver to remove the three 3 millimeter screws securing the front panel to the back panel found above the camera area, on the top portion of the tablet.

Step 5



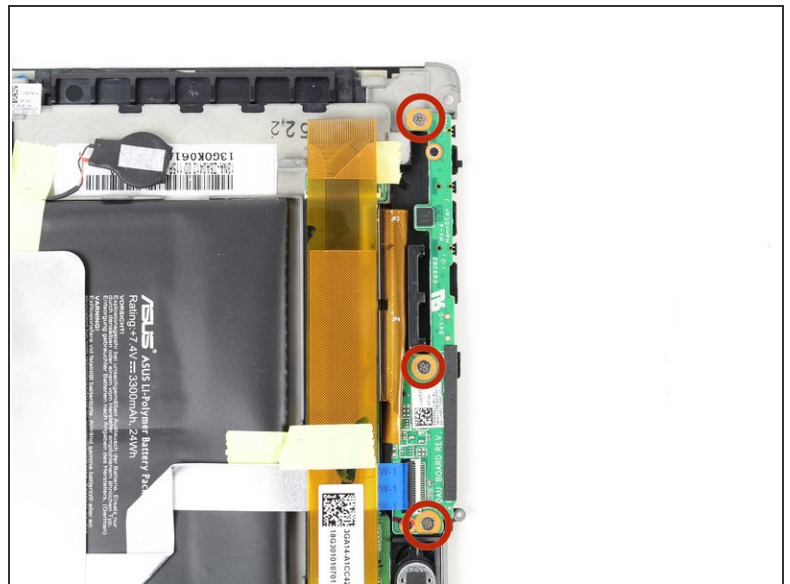
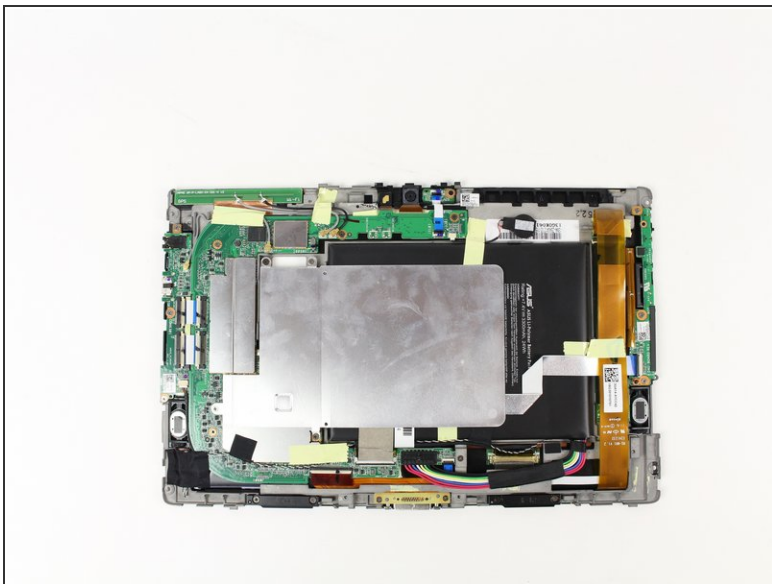
- Use a Phillips #00 Screwdriver to remove the three 3 millimeter screws securing the front panel to the back panel found on the bottom portion of the tablet near the port.

Step 6 — Remove back panel



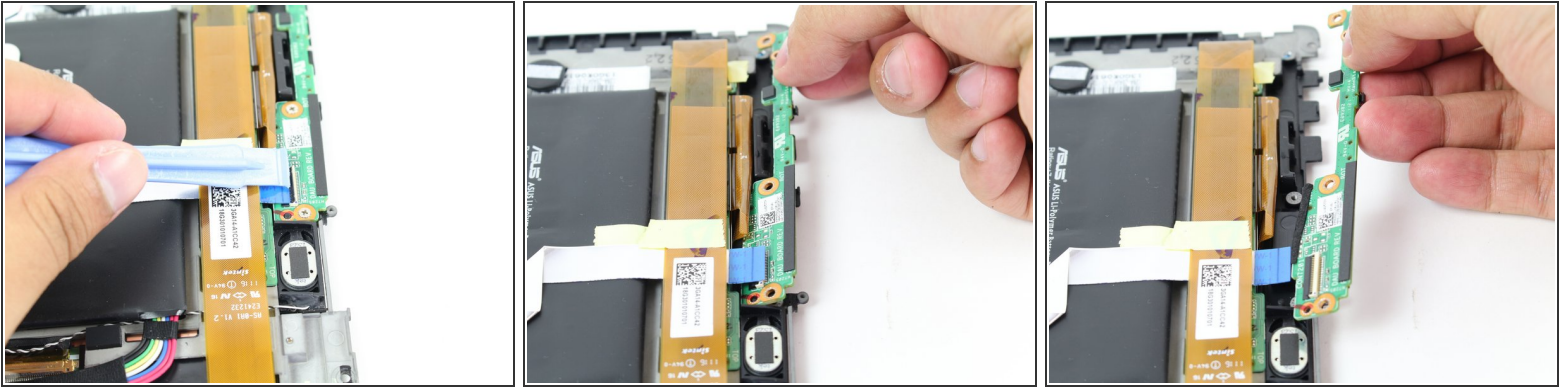
- Remove back panel by pulling away from the remaining device.

Step 7 — Remove button screws



- Use a Phillips #00 Screwdriver to remove the three 3 millimeter screws securing the buttons to the back panel.

Step 8 — Locate and lift button clip



- Use Plastic Opening Tool to pry off the clip located towards the bottom of the button component near the metallic strip with a blue end, capped by the black button clip.
- Remove button component by pulling straight outward from the device.

To reassemble your device, follow these instructions in reverse order.

This document was last generated on 2019-01-15 03:43:44 AM.