



# MacBook Pro 15" Unibody Mid 2010 AirPort/Bluetooth Cable Replacement

Replace the AirPort/Bluetooth cable on your Mid 2010 MacBook Pro 15" Unibody.

Written By: Walter Galan



## INTRODUCTION

Faulty Wi-Fi or Bluetooth connection? Replace the AirPort/Bluetooth cable.

---



### TOOLS:

- [Phillips #00 Screwdriver](#) (1)
- [Spudger](#) (1)



### PARTS:

- [MacBook Pro 15" Unibody \(Mid 2010\) Airport/Bluetooth Cable](#) (1)
-

## Step 1 — Lower Case



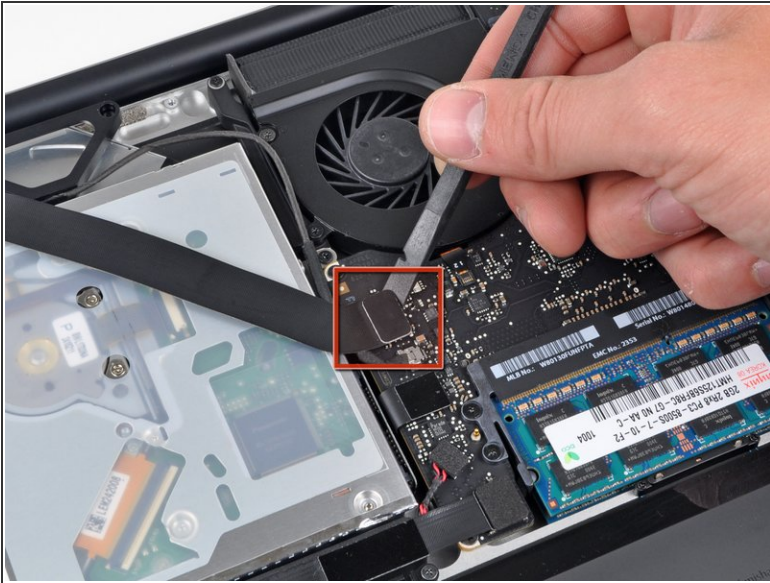
- Remove the following ten screws securing the lower case to the upper case:
  - Three 13.5 mm (14.1 mm) Phillips screws.
  - Seven 3 mm Phillips screws.
- ☑ When removing these screws, note how they come out at a slight angle. They must be reinstalled the same way.

## Step 2



- Using both hands, lift the lower case near the vent to pop it off two clips securing it to the upper case.
- Remove the lower case and set it aside.

### Step 3 — AirPort/Bluetooth Cable



- Use the flat end of a spudger to pry the AirPort/Bluetooth cable connector up off the logic board.
- Carefully peel the AirPort/Bluetooth ribbon cable off the top of the black plastic AirPort/Bluetooth housing.

### Step 4



- Use the flat end of a spudger to pry the AirPort/Bluetooth cable connector up off its socket on the AirPort/Bluetooth board.

To reassemble your device, follow these instructions in reverse order.

This document was last generated on 2019-02-06 05:46:58 PM.