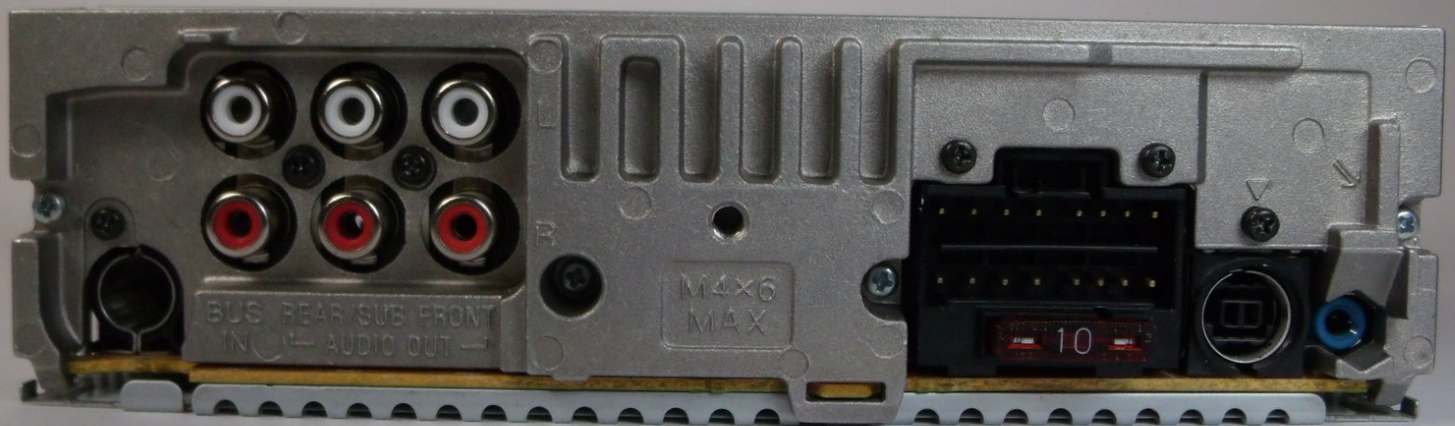




# Sony CDX-GT540UI Back Panel Replacement

This guide will show how to remove the back panel to be able to work inside of the device.

Written By: Odelkys Marquez



---

## INTRODUCTION

This guide will show how to remove the back panel to be able to work inside of the device.

Before any repair work can be done one must remove the device for the vehicle. To do so follow this [link](#) to see a general vehicle removal of a stereo system.

---

### TOOLS:

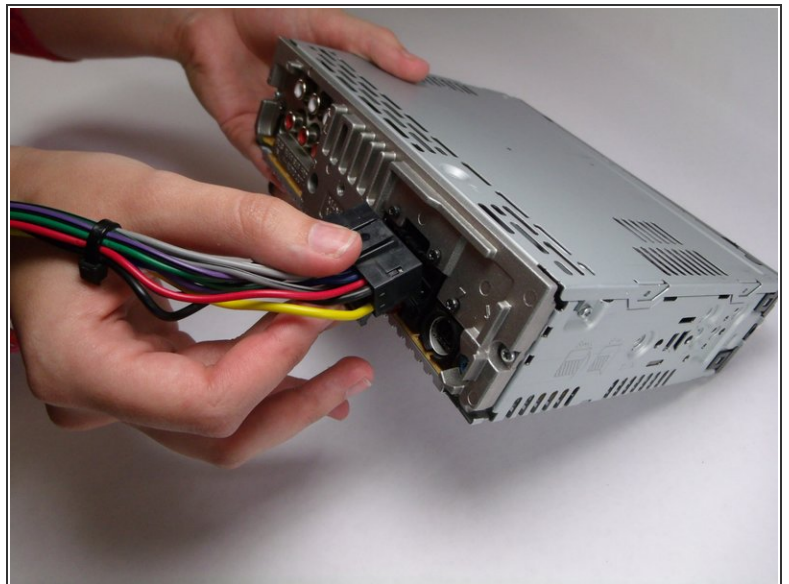
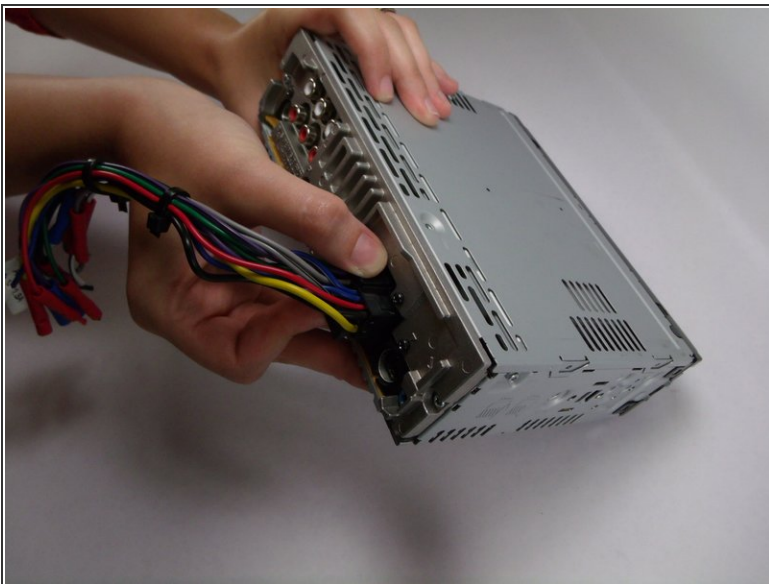
- [Phillips #00 Screwdriver](#) (1)

## Step 1 — Wiring Harness



- Locate the clip on the wiring harness.

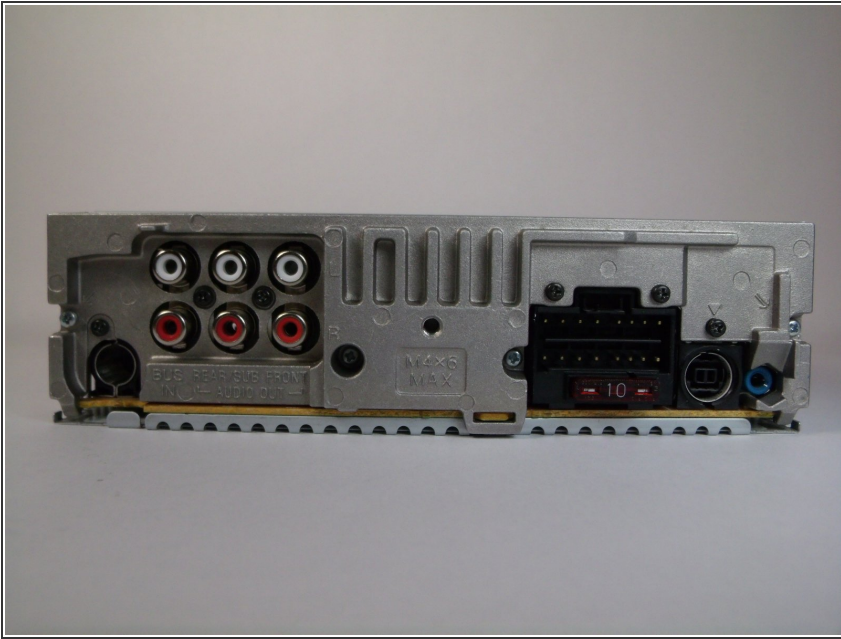
## Step 2



- Press down on the clip like you would an Ethernet cable.
- Rock harness side to side, pulling gently towards you until harness detaches.

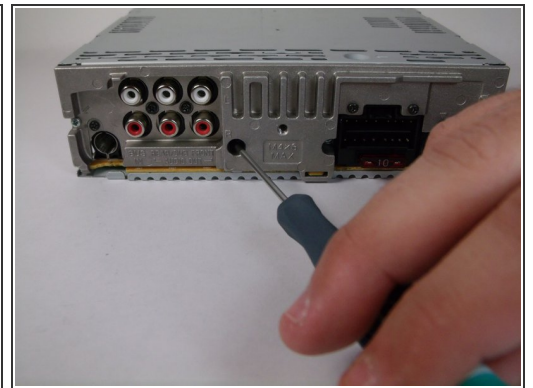
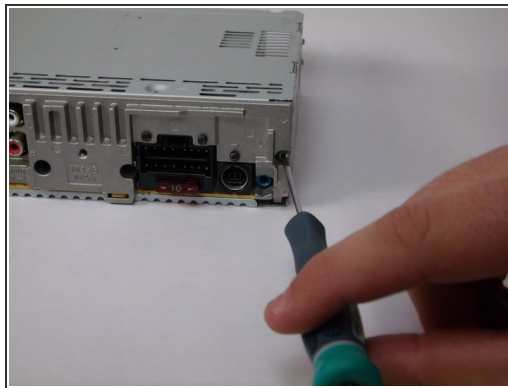
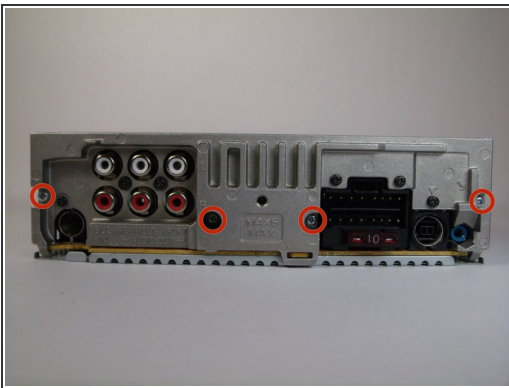


### Step 3 — Back Panel



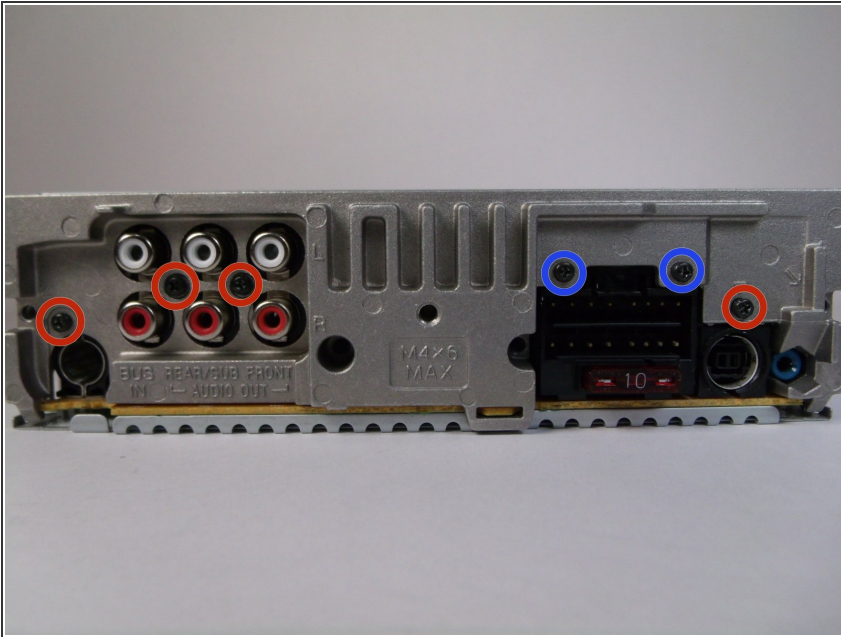
- Locate back panel.

### Step 4



- Remove four 11.5mm Phillips #00 (silver) screws from back panel.

## Step 5



- Remove four 9.5mm Phillips #00 (black) screws from back panel.
- Remove two 7.5mm Phillips #00 (black) screws from back panel.

## Step 6



- Remove back panel.
- ⚠ On the back panel there will be thermal (white) paste. Do not touch.

To reassemble your device, follow these instructions in reverse order.