



Gateway W350I Battery Replacement

Replace the dying battery in your Gateway W350I laptop.

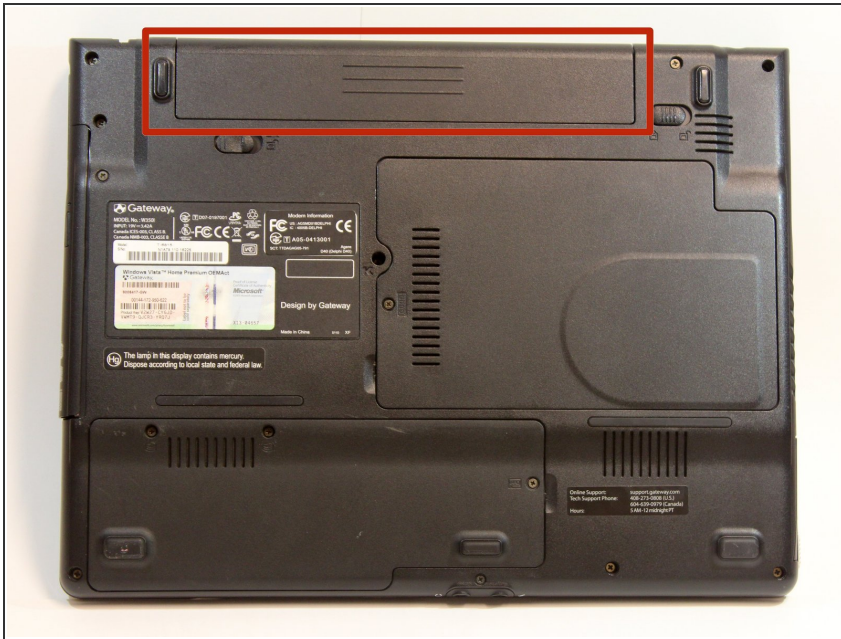
Written By: Spencer



INTRODUCTION

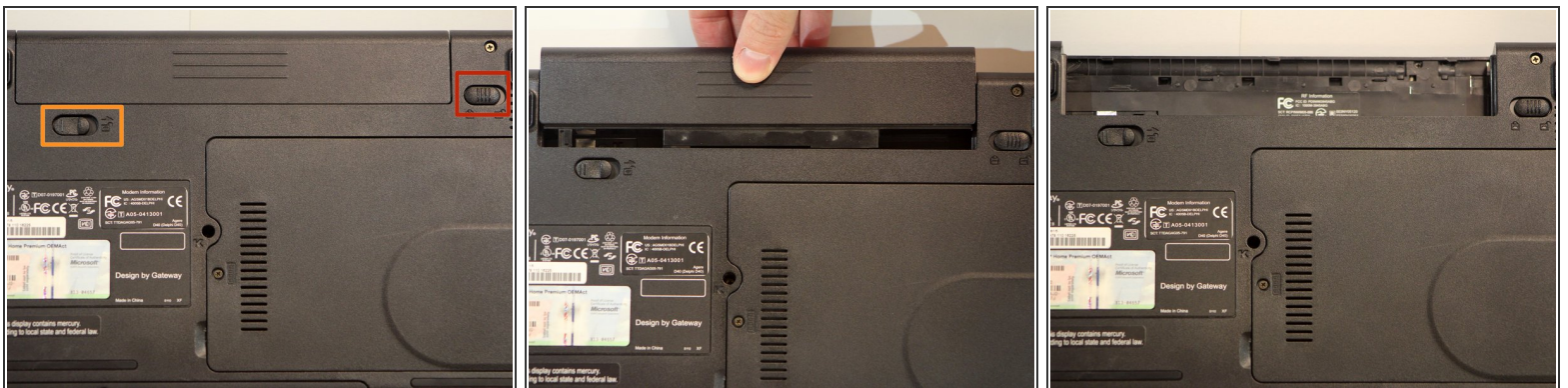
This repair guide is needed if your battery fails to hold a charge and needs to be replaced. The guide should also be followed before working on any electronic component in your laptop. Remember that it is important to remove all power sources before dismantling the laptop.

Step 1 — Battery Access



- Turn the laptop upside down and position it as shown in the image.

Step 2 — Unlocking the Battery



- Slide the locking switch towards the open lock picture.
- Hold the release switch in the unlocked position while simultaneously pushing the battery away from the laptop.
- Once the laptop is disengaged, completely remove the battery from the laptop.

To reassemble your device, follow these instructions in reverse order.