



# Samsung Galaxy S4 Mini Battery Replacement

This guide will show how to replace the battery in the a Samsung Galaxy S4 Mini.

Written By: Arletty



## INTRODUCTION

One common problem of this cell phone is that it does not turn on. This may be because of a faulty battery that needs replacement.

If your battery is swollen, [take appropriate precautions](#).



### TOOLS:

- [iFixit Opening Tools](#) (1)



### PARTS:

- [Galaxy S4 Mini Replacement Battery](#) (1)

## Step 1 — Battery



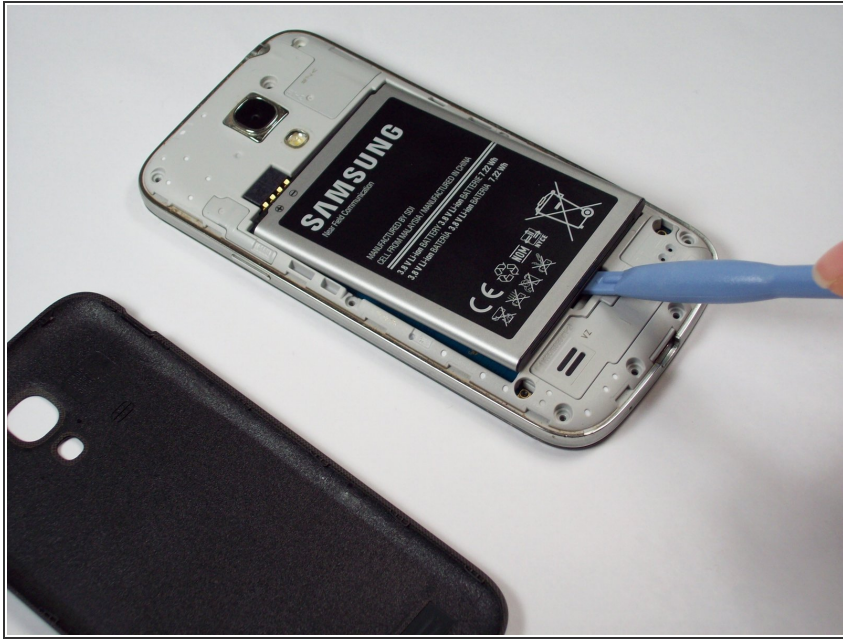
- Press and hold the END key to power the phone down.

## Step 2



- Remove the back cover of the cell phone using a plastic opening tool.

### Step 3



- Pry the battery out using a plastic opening tool.

To reassemble your device, follow these instructions in reverse order.

This document was last generated on 2019-07-10 10:17:48 AM.