



# Garmin Nuvi 200 Rear Casing Replacement

This guide will show you how to install the casing of Garmin Nuvi 200.

Written By: Stuart Heater



 **TOOLS:**

- [iFixit Opening Tools](#) (1)
  - [T5 Torx Screwdriver](#) (1)
-

## Step 1 — Rear Casing



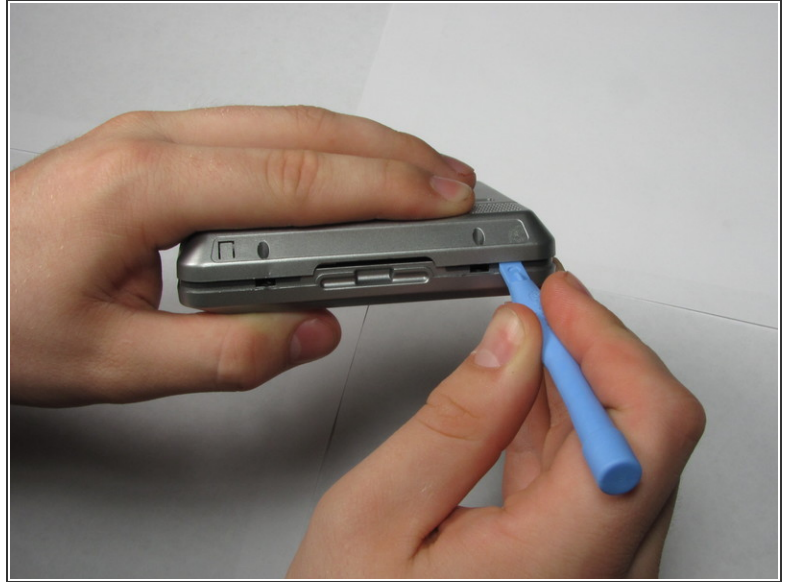
- Peel off the sticker from the bottom of the device to reveal two screws.

## Step 2



- Remove two T5 Torx screws.

### Step 3



- Insert a plastic opening tool in the gap between the front and rear casing.
- Carefully work the tool around the gap, separating the two halves of the case.
- ⓘ Keep the power switch in place while removing the rear case.

This document was last generated on 2017-06-30 03:49:57 PM.