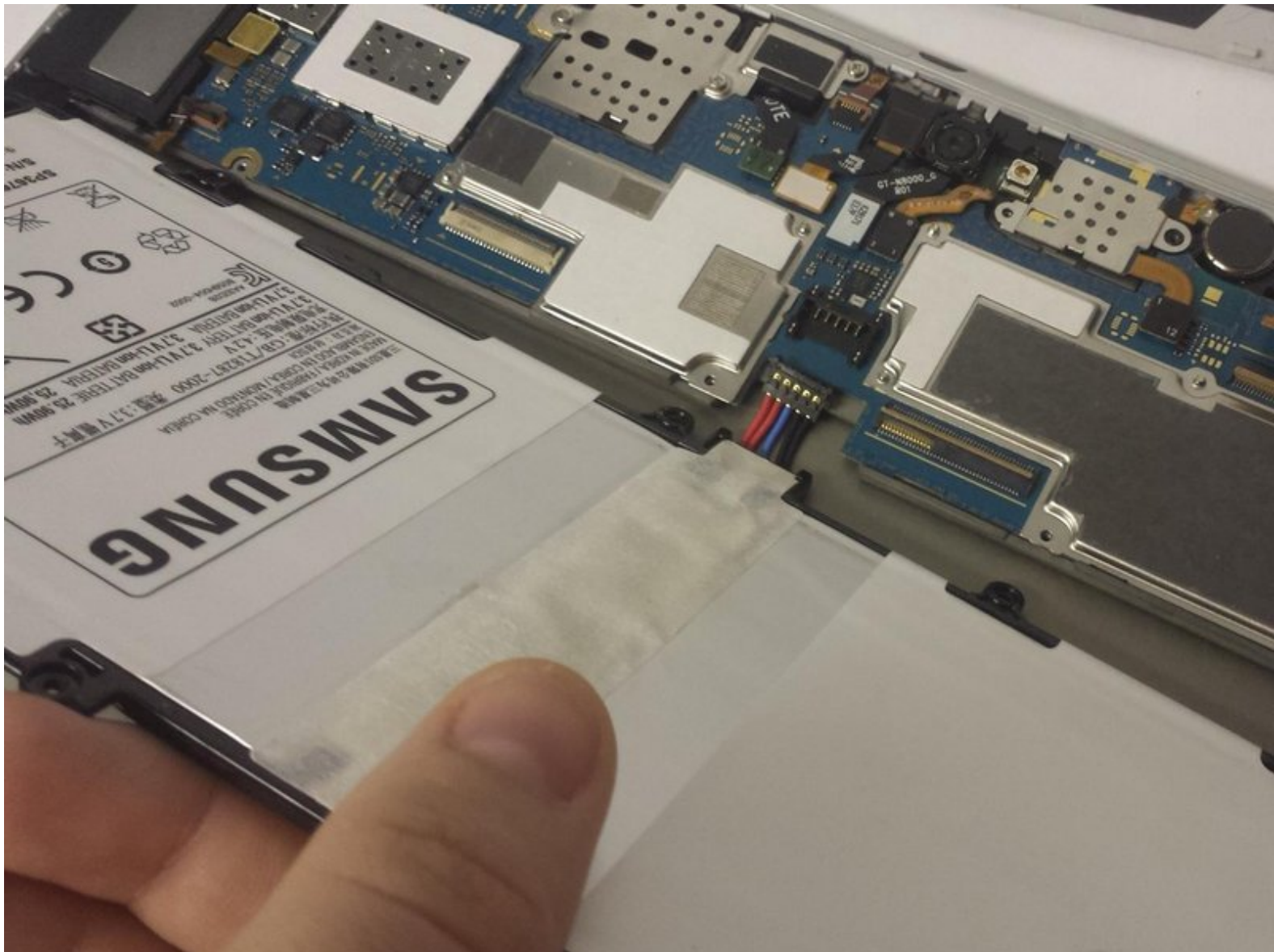




Samsung Galaxy Note 10.1 Battery Replacement

Battery is not chargeable or will not hold a charge and needs replacement.

Written By: Tyler Salomone



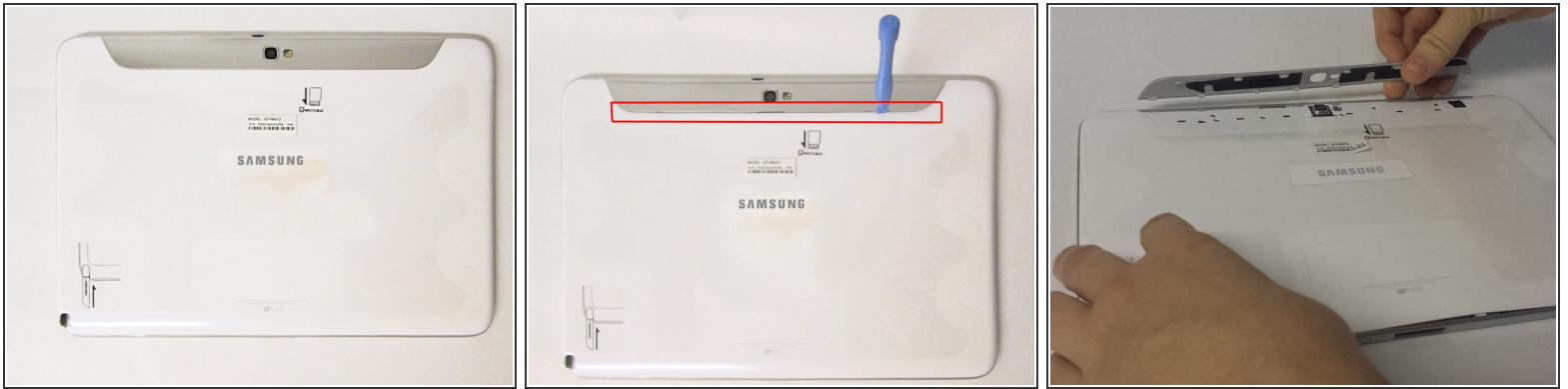
 **TOOLS:**

- [iFixit Opening Tools](#) (1)
- [Phillips #00 Screwdriver](#) (1)

 **PARTS:**

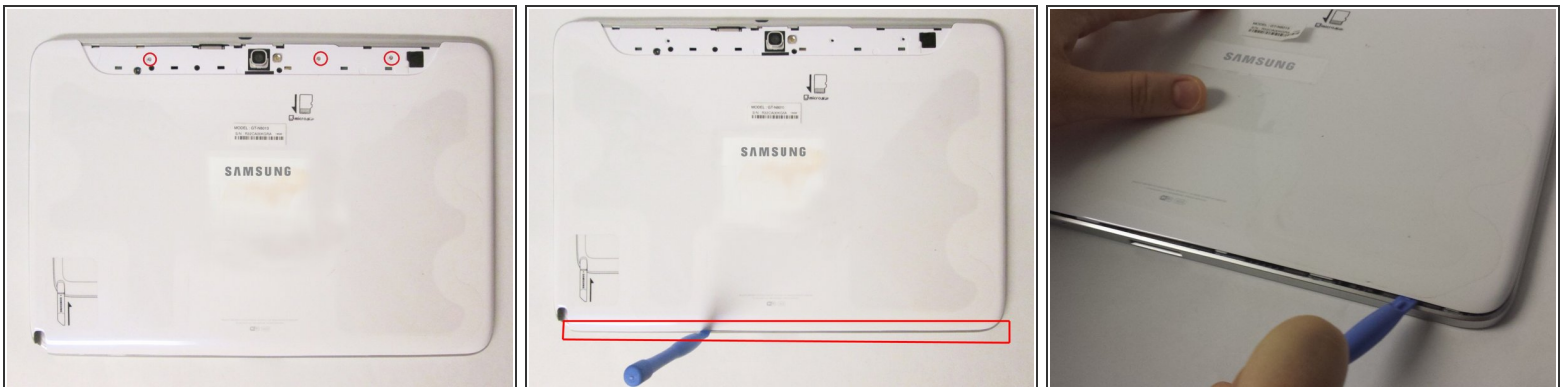
- [Galaxy Note 10.1 \(2012\) Rear Panel](#) (1)
- [Galaxy Note 10.1 \(2012\) Battery](#) (1)

Step 1 — Removing the Top Piece



- This is the back of the device and where you will begin to take it apart
- It is necessary to remove this piece first before removing the bigger back piece.
- Use the plastic opening tools to pry along the indicated box.
- Lift up the silver piece to reveal the rest of the back cover.

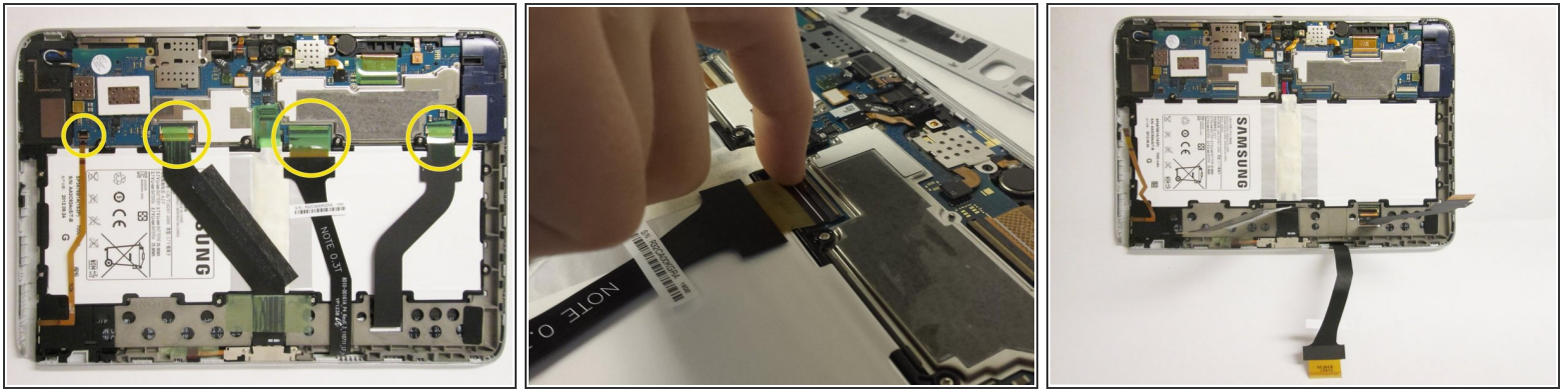
Step 2 — Removing the Back Cover



- Unscrew the three 5 mm screws indicated by the red circles with the Philips #00 screwdriver.
- Using the plastic opening tools pry along the bottom of the device, moving to the sides of the cover to the top.
- Remove the back cover.

⚠ At this point use anti-static gloves or do **NOT** take it apart on carpet.

Step 3 — Removing components covering battery



- Carefully remove all of the ribbons that connect over the battery from the locations indicated by the yellow circles.

Step 4 — Removing the Battery



- Remove all of the 3 mm screws indicated by a red circle with the #00 Philips Screwdriver.
- Disconnect the battery from the location indicated by a yellow circle
- Now you may remove the battery. The replacement battery should be 3.7 Volts and 25.9 kWh.

To reassemble your device, follow these instructions in reverse order.

This document was last generated on 2019-07-12 11:27:33 AM.