



# AlphaSmart Pro Front Panel Replacement

This guide will show users how to replace the plastic front panel of the device.

Written By: Nathan Smith



---

## INTRODUCTION

The front panel may need to be replaced if it is cracked or damaged.

---

### TOOLS:

- [Phillips #00 Screwdriver](#) (1)
  - [Spudger](#) (1)
-

## Step 1 — Separating Panels

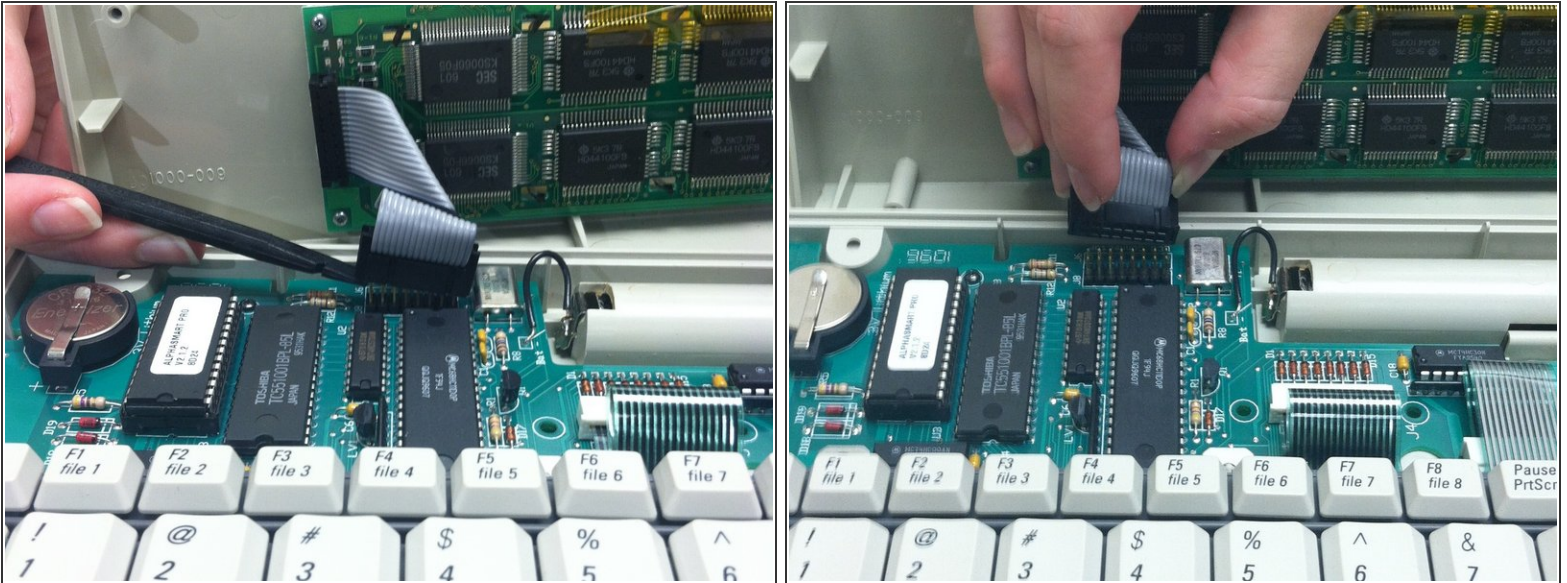


**⚠** Power off your AlphaSmart Pro device and remove the batteries before beginning disassembly.

- Remove all eight 1 cm Phillips head screws from the back panel of the AlphaSmart Pro with the Phillips #00 Screwdriver.
- Carefully separate the front panel from the back panel.
- i** Notice that the front and back panels are still connected by a ribbon cable.

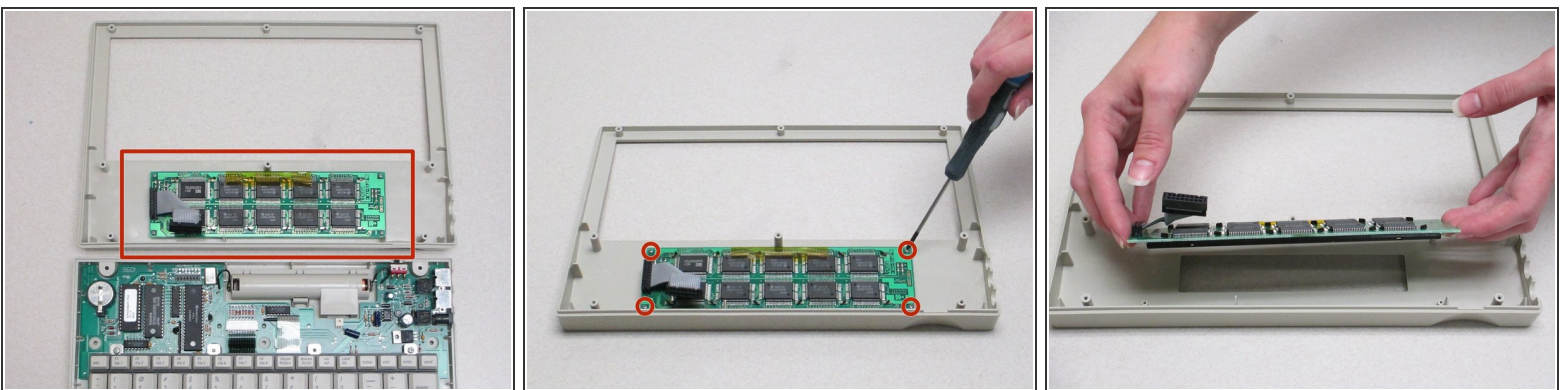


## Step 2 — Detaching Ribbon Cable



- To remove the ribbon cable, use the spudger to lift each side of the connector from the socket.
- Gently pull up on the connector to completely remove the connector from the socket.
- You are now able to separate the front panel from the back panel.

## Step 3 — Removing Display Screen



- Looking at the front panel, use the Phillips #00 screwdriver to remove the four Phillips head 0.8 cm screws from each corner of the display motherboard.
- Lift the display screen and motherboard from the plastic front panel to separate the two pieces.

To reassemble your device, follow these instructions in reverse order.