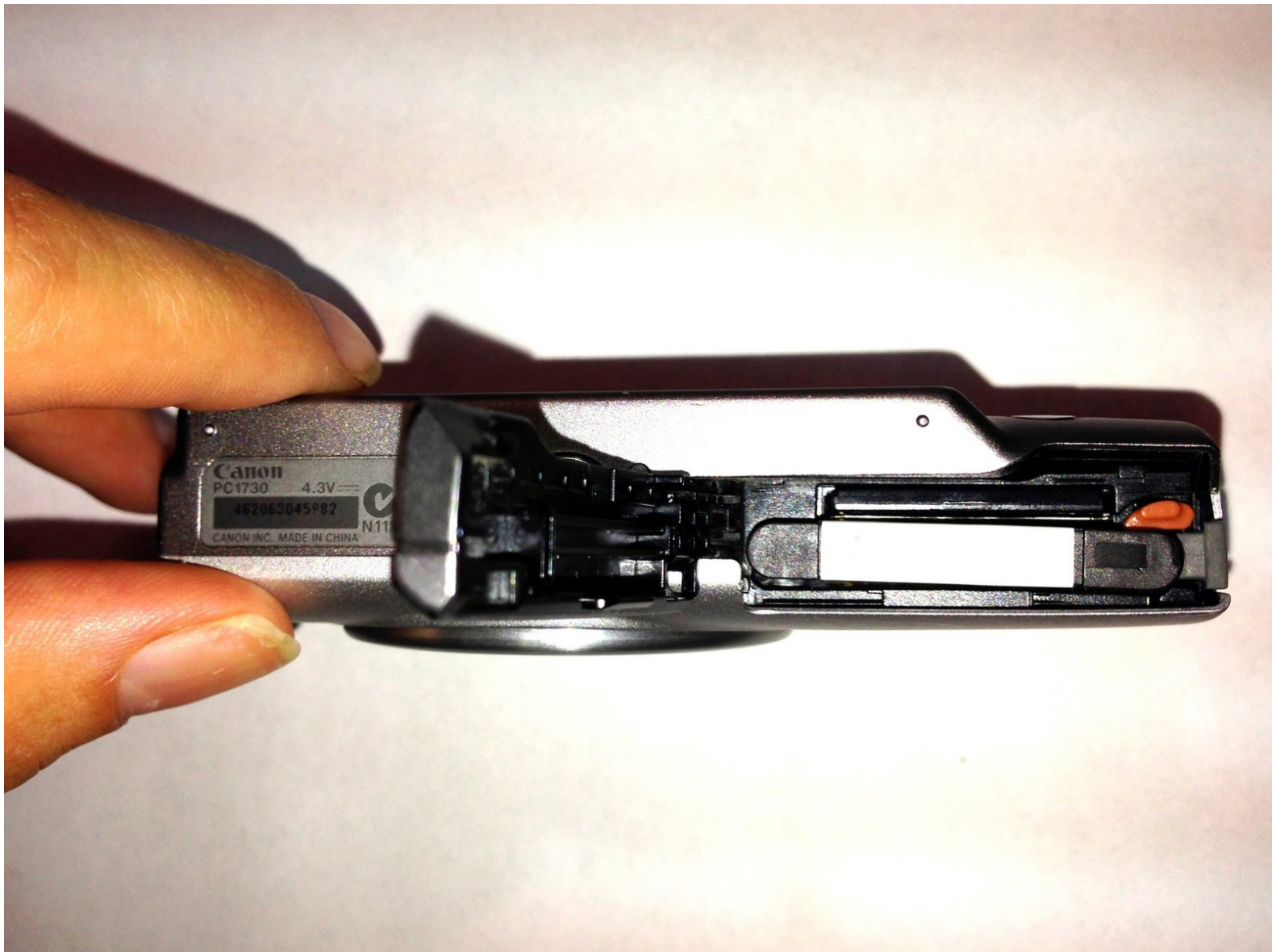




Canon PowerShot A4000 IS SD Card Replacement

This guide demonstrates how to remove and reinsert the memory card from your Canon PowerShot A4000 camera.

Written By: Ansley Gardner

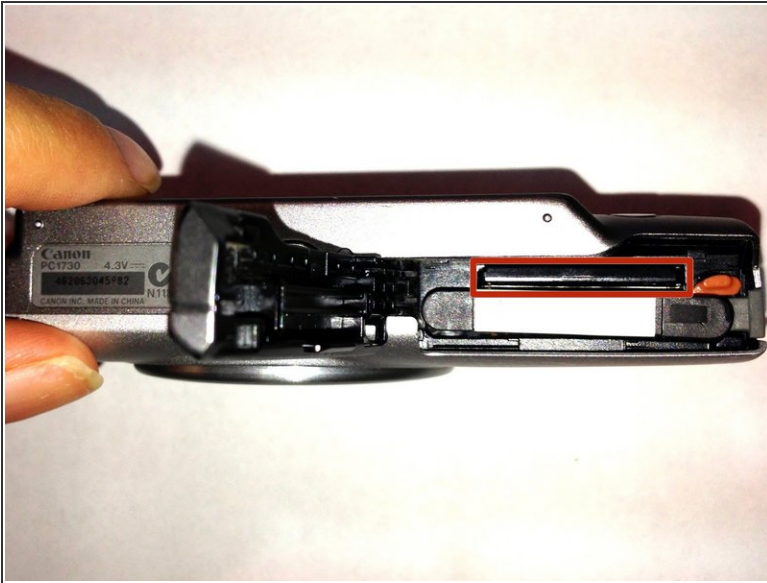


Step 1 — Reinserting Memory Card



- The inside of your Canon PowerShot A4000 camera should have a picture showing how to reinsert your memory card.
- Line the memory card up like it is shown in the camera and using your thumb, press down on the card until you hear a click. Your memory card is now back in place and ready for use.

Step 2 — Memory Card Removal



- To open the battery compartment where the memory card is stored, refer to the [Battery Replacement Guide](#).
- The memory card is stored behind the battery on the side opposite of the lens as outlined by the red rectangle in the picture.
- To remove the memory card, use your thumb to press down on the exposed part of the card.
- The card will dip down further into the compartment and then you will hear a click as the card is released.

To reassemble your device, follow these instructions in reverse order.