



# Samsung Galaxy S5 Mini Rear Panel Replacement

This guide describes the removal and replacement of the rear panel of a Samsung Galaxy S5 Mini.

Written By: Jon Kuzmich



---

## INTRODUCTION

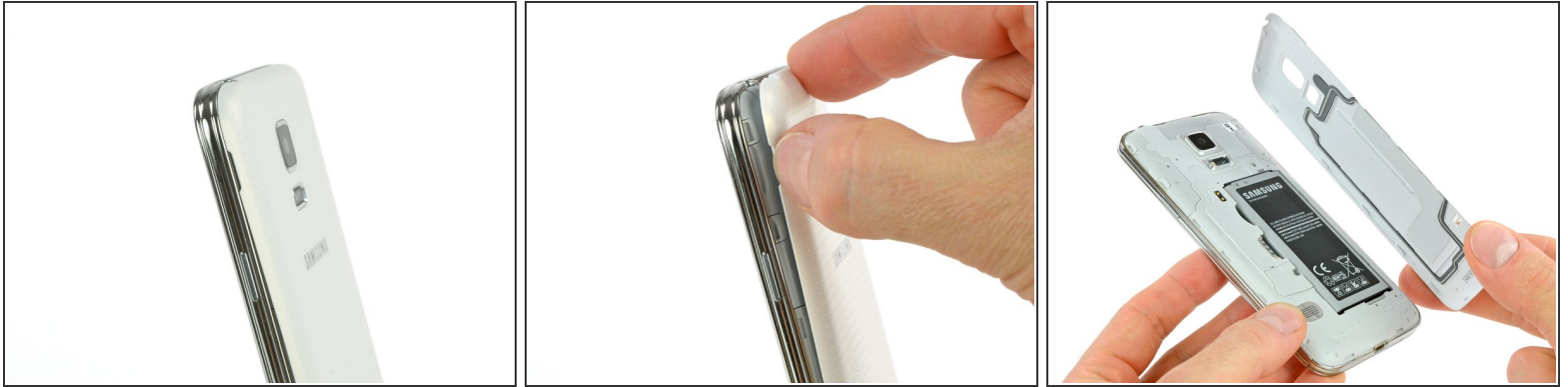
Use this guide to remove and replace the rear panel of a Samsung Galaxy S5 mini.

---

### TOOLS:

- [iFixit Opening Tools](#) (1)
-

## Step 1 — Rear Panel



- Insert a fingernail or a plastic opening tool into the slot located above the power button.
- Gently pull the panel off the back of the phone.
- ⓘ The plastic snaps will make a popping sound as they separate.

To reassemble your device, follow these instructions in reverse order.